



The CPT post base provides a clean look while providing a 25mm stand off height above the ground. reducing the potential for decay at the post end.

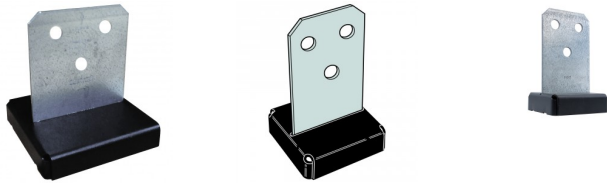
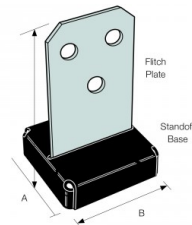


## FEATURES



## Materials

Flitch plate, washers and standoff base are pre-galvanised steel.  
The standoff base has an additional textured, flat black powder coat finish for aesthetic purposes.  
The 12mm diameter dowels are mechanically galvanised.



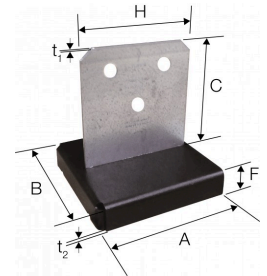
## APPLICATIONS

### Concrete

Fix timber posts to concrete.

TECHNICAL DATA

Product Dimensions



References	Timber post size [mm]	Product Dimensions [mm]								Holes	
		A	B	C	F	H	t <sub>1</sub>	t <sub>2</sub>	Washer	Top Ø13.5	Base Ø13.5
CPT44Z	89x89 to 100x100	89	89	145	25	79	3.5	2.7	36x29x3.5	3	2
CPT66Z	133x133 to 150x150	133	133	145	25	114	3.5	2.7	36x29x3.5	3	2
CPT88Z	184x184 to 203x203	184	184	145	25	114	3.5	2.7	36x29x3.5	3	2

Characteristic Capacities

References	Number of Fasteners				Characteristic Capacity - Timber C24 [kN]			
	Into Post		Into Concrete		R <sub>1,k</sub>	R <sub>2,k</sub>	R <sub>3,k</sub>	R <sub>4,k</sub>
	Qty	Type (Dowels)	Qty	Anchor				
CPT44Z	3	Ø13x70	2	Ø12	59.4	11.2	7.3	3.9
CPT66Z	3	Ø13x120	2	Ø12	91.2	16.3	9.1	5.6
CPT88Z	3	Ø13x120	2	Ø12	123.1	16.3	9.1	5.6

The published characteristic capacity is based on medium term load duration and service class 3 according to EC5 (EN 1995). For other load duration and service class, please refer to the ETA

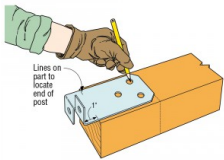
For combined loads:

$$\sum \frac{F_{i,d}}{R_{i,d}} \leq 1$$

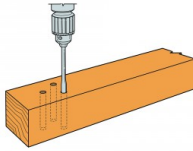
## INSTALLATION

### Installation Sequence

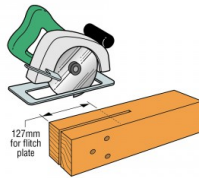
Follow the steps below:



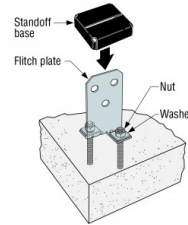
**Step 1:** Use the flitch plate as a template to mark dowel locations.



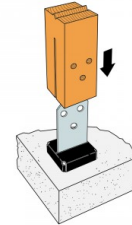
**Step 2:** Drill 13mm holes perpendicular to the post at marked locations.



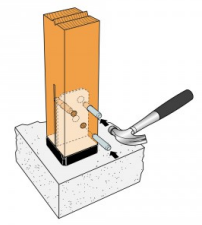
**Step 3:** Cut a 5mm wide slot on the side adjacent the drilled holes. Check that the flitch plate slides freely.



**Step 3:** Cut a 5mm wide slot on the side adjacent the drilled holes. Check that the flitch plate slides freely.



**Step 5:** Lower the post onto the flitch plate with the drilled holes aligned with the three holes in the flitch plate. Be careful to avoid rotating the post during installation.



**Step 6:** Drive the dowels into the post and through the flitch plate they should be roughly centred within the post.