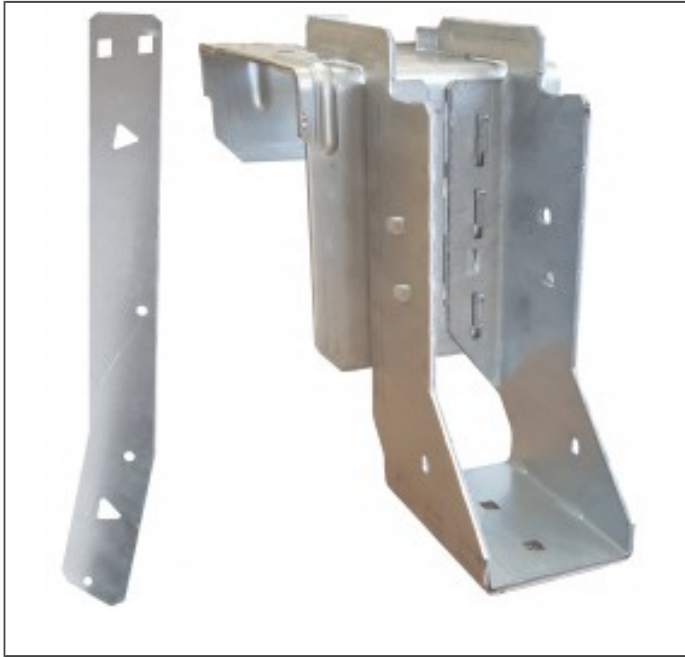


SFWHI - SAFETY FAST (WELDED) MASONRY RESTRAINT HANGER FOR I-JOISTS



The Safety Fast Hangers are designed to support timber joists, beams and trussed rafters from masonry walls without the need for masonry above the top flange.

[UK-DoP-h07/0004](#)

FEATURES

Benefits

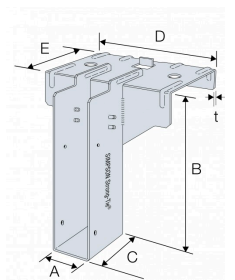
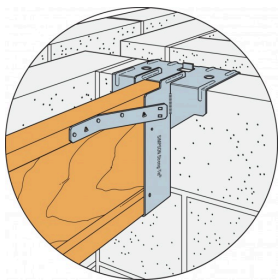
- Requires no masonry above the top flange to achieve the published performance values.
- Improved vertical and lateral load distribution.
- Mini Strap simply hooks onto the hanger.
- Enables the construction of the floor deck prior to the next lift of masonry.
- Reduces Health & Safety risks associated with the use of the traditional masonry hangers with no masonry above.
- Eliminates the need for propping of floor joists.
- Mini Strap provides lateral restraint capacity in accordance with NHBC guidelines.
- Allows for retrofit of lateral restraint straps.

Material

- SFWH/SFWHI: Hot-dip galvanised mild steel
- Mini Strap: Pre-galvanised mild steel

TECHNICAL DATA

Product Dimensions



References	Joist Size [mm]		Product Dimensions [mm]						Joist holes		Mini Strap holes
	Width	Height	A	B	C	D	E	t	Ø6x4 Oblong [mm]	Ø4.1 [mm]	Ø4.2 [mm]
SFWHI225/72/1	70	225	72	225	75	200	100	2.5	2	2	3
SFWHI240/72/100	70	240	72	240	75	200	100	2.5	2	2	3

SFWHI - SAFETY FAST (WELDED) MASONRY RESTRAINT HANGER FOR I-JOISTS



References	Joist Size [mm]		Product Dimensions [mm]						Joist holes		Mini Strap holes
	Width	Height	A	B	C	D	E	t	Ø6x4 Oblong [mm]	Ø4.1 [mm]	Ø4.2 [mm]
SFWHI300/72/1	70	300	72	300	75	200	100	2.5	2	2	3
SFWHI350/72/100	70	350	72	350	75	200	100	2.5	2	2	3
SFWHI400/72/1	72	400	72	400	75	200	100	2.5	2	2	3
SFWHI195/78/100	2x38	195	78	195	75	200	100	2.5	2	2	3
SFWHI225/78/1	2x38	225	78	225	75	200	100	2.5	2	2	3
SFWHI235/78/100	2x38	235	78	235	75	200	100	2.5	2	2	3
SFWHI240/78/1	2x38	240	78	240	75	200	100	2.5	2	2	3
SFWHI245/78/100	2x38	245	78	245	75	200	100	2.5	2	2	3
SFWHI300/78/1	2x38	300	78	300	75	200	100	2.5	2	2	3
SFWHI350/78/100	2x38	350	78	350	75	200	100	2.5	2	2	3
SFWHI400/78/1	2x38	400	78	400	75	200	100	2.5	2	2	3
SFWHI450/78/100	2x38	450	78	450	75	200	100	2.5	2	2	3
SFWHI195/91/1	2x45 or 89-90	195	91	195	75	200	100	2.5	2	2	3
SFWHI200/91/100	2x45 or 89-90	200	91	200	75	200	100	2.5	2	2	3
SFWHI225/91/1	2x45 or 89-90	225	91	225	75	200	100	2.5	2	2	3
SFWHI235/91/100	2x45 or 89-90	235	91	235	75	200	100	2.5	2	2	3
SFWHI240/91/1	2x45 or 89-90	240	91	240	75	200	100	2.5	2	2	3
SFWHI245/91/100	2x45 or 89-90	245	91	245	75	200	100	2.5	2	2	3
SFWHI300/91/1	2x45 or 89-90	300	91	300	75	200	100	2.5	2	2	3
SFWHI350/91/100	2x45 or 89-90	350	91	350	75	200	100	2.5	2	2	3
SFWHI400/91/1	2x45 or 89-90	400	91	400	75	200	100	2.5	2	2	3
SFWHI450/91/100	2x45 or 89-90	450	91	450	75	200	100	2.5	2	2	3
SFWHI195/96/1	2x47	195	96	195	75	200	100	2.5	2	2	3
SFWHI225/96/100	2x47	225	96	225	75	200	100	2.5	2	2	3
SFWHI235/96/1	2x47	235	96	235	75	200	100	2.5	2	2	3
SFWHI240/96/100	2x47	240	96	240	75	200	100	2.5	2	2	3
SFWI245/96/1	2x47	245	96	245	75	200	100	2.5	2	2	3
SFWHI300/96/100	2x47	300	96	300	75	200	100	2.5	2	2	3
SFWHI350/96/1	2x47	350	96	350	75	200	100	2.5	2	2	3
SFWHI400/96/100	2x47	400	96	400	75	200	100	2.5	2	2	3
SFWHI195/100/	97	195	100	195	75	200	100	2.5	2	2	3
SFWHI225/100/100	97	220	100	220	75	200	100	2.5	2	2	3
SFWHI235/100/	97	235	100	235	75	200	100	2.5	2	2	3
SFWHI240/100/100	97	240	100	240	75	200	100	2.5	2	2	3
SFWHI245/100/	97	245	100	245	75	200	100	2.5	2	2	3
SFWHI300/100/100	97	300	100	300	75	200	100	2.5	2	2	3
SFWHI350/100/	97	350	100	350	75	200	100	2.5	2	2	3
SFWHI400/100/100	97	400	100	400	75	200	100	2.5	2	2	3
SFWHI450/100/	97	450	100	450	75	200	100	2.5	2	2	3
SFWHI240/105/100	2x51	240	105	240	75	200	100	2.5	2	2	3
SFWHI300/105/	2x51	300	105	300	75	200	100	2.5	2	2	3
SFWHI350/105/100	2x51	350	105	350	75	200	100	2.5	2	2	3
SFWHI195/120/	2x58 or 2x60	195	120	195	75	200	100	2.5	2	2	3
SFWHI200/120/100	2x58 or 2x60	200	120	200	75	200	100	2.5	2	2	3

SFWHI - SAFETY FAST (WELDED) MASONRY RESTRAINT HANGER FOR I-JOISTS



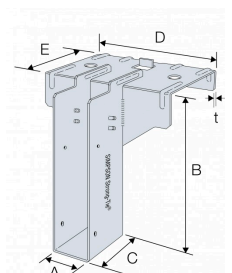
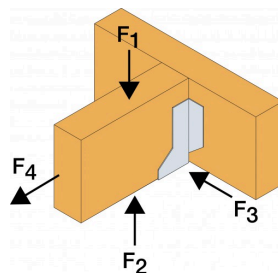
References	Joist Size [mm]		Product Dimensions [mm]						Joist holes		Mini Strap holes
	Width	Height	A	B	C	D	E	t	Ø6x4 Oblong [mm]	Ø4.1 [mm]	Ø4.2 [mm]
SFWHI225/120/100	2x58 or 2x60	220	120	220	75	200	100	2.5	2	2	3
SFWHI235/120/100	2x58 or 2x60	235	120	235	75	200	100	2.5	2	2	3
SFWHI240/120/100	2x58 or 2x60	240	120	240	75	200	100	2.5	2	2	3
SFWHI245/120/100	2x58 or 2x60	245	120	245	75	200	100	2.5	2	2	3
SFWHI300/120/100	2x58 or 2x60	300	120	300	75	200	100	2.5	2	2	3
SFWHI350/120/100	2x58 or 2x60	350	120	350	75	200	100	2.5	2	2	3
SFWHI400/120/100	2x58 or 2x60	400	120	400	75	200	100	2.5	2	2	3
SFWHI195/129/100	2x63	195	129	195	75	275	100	2.5	2	2	3
SFWHI225/129/100	2x63	225	129	225	75	275	100	2.5	2	2	3
SFWHI235/129/100	2x63	235	129	235	75	275	100	2.5	2	2	3
SFWHI240/129/100	2x63	240	129	240	75	275	100	2.5	2	2	3
SFWHI245/129/100	2x63	245	129	245	75	275	100	2.5	2	2	3
SFWHI300/129/100	2x63	300	129	300	75	275	100	2.5	2	2	3
SFWHI350/129/100	2x63	350	129	350	75	275	100	2.5	2	2	3
SFWHI400/129/100	2x63	400	129	400	75	275	100	2.5	2	2	3
SFWHI184/135/100	3x45 or 135	184	135	184	75	275	100	2.5	2	2	3
SFWHI200/135/100	3x45 or 135	200	135	200	75	275	100	2.5	2	2	3
SFWHI225/135/100	3x45 or 135	225	135	225	75	275	100	2.5	2	2	3
SFWHI240/135/100	3x45 or 135	240	135	240	75	275	100	2.5	2	2	3
SFWHI245/135/100	3x45 or 135	245	135	245	75	275	100	2.5	2	2	3
SFWHI300/135/100	3x45 or 135	300	135	300	75	275	100	2.5	2	2	3
SFWHI350/135/100	3x45 or 135	350	135	350	75	275	100	2.5	2	2	3
SFWHI400/135/100	3x45 or 135	400	135	400	75	275	100	2.5	2	2	3
SFWHI450/135/100	3x45 or 135	450	135	450	75	275	100	2.5	2	2	3
SFWHI225/142/100	2x70	220	142	220	75	275	100	2.5	2	2	3
SFWHI240/142/100	2x70	240	142	240	75	275	100	2.5	2	2	3
SFWHI300/142/100	2x70	300	142	300	75	275	100	2.5	2	2	3
SFWHI350/142/100	2x70	350	142	350	75	275	100	2.5	2	2	3
SFWHI400/142/100	2x70	400	142	400	75	275	100	2.5	2	2	3
SFWHI195/146/100	2x72	195	146	195	75	275	100	2.5	2	2	3
SFWHI225/146/100	2x72	225	146	225	75	275	100	2.5	2	2	3
SFWHI235/146/100	2x72	235	146	235	75	275	100	2.5	2	2	3
SFWHI245/146/100	2x72	245	146	245	75	275	100	2.5	2	2	3
SFWHI300/146/100	2x72	300	146	300	75	275	100	2.5	2	2	3
SFWHI350/146/100	2x72	350	146	350	75	275	100	2.5	2	2	3
SFWHI400/146/100	2x72	400	146	400	75	275	100	2.5	2	2	3
SFWHI195/152/100	2x75	195	152	195	75	275	100	2.5	2	2	3
SFWHI225/152/100	2x75	220	152	220	75	275	100	2.5	2	2	3
SFWHI235/152/100	2x75	235	152	235	75	275	100	2.5	2	2	3
SFWHI240/152/100	2x75	240	152	240	75	275	100	2.5	2	2	3
SFWHI300/152/100	2x75	300	152	300	75	275	100	2.5	2	2	3

SFWHI - SAFETY FAST (WELDED) MASONRY RESTRAINT HANGER FOR I-JOISTS



References	Joist Size [mm]		Product Dimensions [mm]						Joist holes		Mini Strap holes
	Width	Height	A	B	C	D	E	t	Ø6x4 Oblong [mm]	Ø4.1 [mm]	Ø4.2 [mm]
SFWHI350/152/100	2x75	350	152	350	75	275	100	2.5	2	2	3
SFWHI400/152/100	2x75	400	152	400	75	275	100	2.5	2	2	3
SFWHI450/152/100	2x75	450	152	450	75	275	100	2.5	2	2	3
SFWHI195/180/100	2x89 or 178	195	180	195	75	275	100	2.5	2	2	3
SFWHI200/180/100	2x89 or 178	200	180	200	75	275	100	2.5	2	2	3
SFWHI225/180/100	2x89 or 178	225	180	225	75	275	100	2.5	2	2	3
SFWHI235/180/100	2x89 or 178	235	180	235	75	275	100	2.5	2	2	3
SFWHI245/180/100	2x89 or 178	245	180	245	75	275	100	2.5	2	2	3
SFWHI300/180/100	2x89 or 178	300	180	300	75	275	100	2.5	2	2	3
SFWHI350/180/100	2x89 or 178	350	180	350	75	275	100	2.5	2	2	3
SFWHI400/180/100	2x89 or 178	400	180	400	75	275	100	2.5	2	2	3
SFWHI450/180/100	2x89 or 178	450	180	450	75	275	100	2.5	2	2	3
SFWHI225/184/100	2x90	220	184	220	75	275	100	2.5	2	2	3
SFWHI240/184/100	2x90	240	184	240	75	275	100	2.5	2	2	3
SFWHI300/184/100	2x90	300	184	300	75	275	100	2.5	2	2	3
SFWHI350/184/100	2x90	350	184	350	75	275	100	2.5	2	2	3
SFWHI400/184/100	2x90	400	184	400	75	275	100	2.5	2	2	3
SFWHI195/196/100	2x97	195	196	195	75	275	100	2.5	2	2	3
SFWHI225/196/100	2x97	220	196	220	75	275	100	2.5	2	2	3
SFWHI235/196/100	2x97	235	196	235	75	275	100	2.5	2	2	3
SFWHI240/196/100	2x97	240	196	240	75	275	100	2.5	2	2	3
SFWHI245/196/100	2x97	245	196	245	75	275	100	2.5	2	2	3
SFWHI300/196/100	2x97	300	196	300	75	275	100	2.5	2	2	3
SFWHI350/196/100	2x97	350	196	350	75	275	100	2.5	2	2	3
SFWHI400/196/100	2x97	400	196	400	75	275	100	2.5	2	2	3
SFWHI450/196/100	2x97	450	196	450	75	275	100	2.5	2	2	3

Product capacities - Timber to masonry



References	Number of Fasteners				Characteristic Capacities [kN]		Safe Working Loads [kN]		
	Joist Fasteners		Mini Strap		$R_{1,k}$		$R_{1,SWL}$		
	Qty	Type	Qty	Type	3.5N/mm ² Solid LAC	7N/mm ² Solid DAC	2.8N/mm ² Solid AAC	3.5N/mm ² Solid LAC	7N/mm ² Solid DAC
SFWHI225/72/100	2	N3.75x30	3	N3.75x30	28.9	28.9	11.6	14.5	14.5

SFWHI - SAFETY FAST (WELDED) MASONRY RESTRAINT HANGER FOR I-JOISTS



References	Number of Fasteners				Characteristic Capacities [kN]		Safe Working Loads [kN]		
	Joist Fasteners		Mini Strap		R _{1,k}		R _{1,SWL}		
	Qty	Type	Qty	Type	3.5N/mm ² Solid LAC	7N/mm ² Solid DAC	2.8N/mm ² Solid AAC	3.5N/mm ² Solid LAC	7N/mm ² Solid DAC
SFWHI240/72/100	2	N3.75x30	3	N3.75x30	28.9	28.9	11.6	14.5	14.5
SFWHI300/72/100	2	N3.75x30	3	N3.75x30	28.9	28.9	11.6	14.5	14.5
SFWHI350/72/100	2	N3.75x30	3	N3.75x30	28.9	28.9	11.6	14.5	14.5
SFWHI400/72/100	2	N3.75x30	3	N3.75x30	28.9	28.9	11.6	14.5	14.5
SFWHI195/78/100	2	N3.75x30	3	N3.75x30	28.9	28.9	11.6	14.5	14.5
SFWHI225/78/100	2	N3.75x30	3	N3.75x30	28.9	28.9	11.6	14.5	14.5
SFWHI235/78/100	2	N3.75x30	3	N3.75x30	28.9	28.9	11.6	14.5	14.5
SFWHI240/78/100	2	N3.75x30	3	N3.75x30	28.9	28.9	11.6	14.5	14.5
SFWHI245/78/100	2	N3.75x30	3	N3.75x30	28.9	28.9	11.6	14.5	14.5
SFWHI300/78/100	2	N3.75x30	3	N3.75x30	28.9	28.9	11.6	14.5	14.5
SFWHI350/78/100	2	N3.75x30	3	N3.75x30	28.9	28.9	11.6	14.5	14.5
SFWHI400/78/100	2	N3.75x30	3	N3.75x30	28.9	28.9	11.6	14.5	14.5
SFWHI450/78/100	2	N3.75x30	3	N3.75x30	28.9	28.9	11.6	14.5	14.5
SFWHI195/91/100	2	N3.75x30	3	N3.75x30	28.9	28.9	11.6	14.5	14.5
SFWHI200/91/100	2	N3.75x30	3	N3.75x30	28.9	28.9	11.6	14.5	14.5
SFWHI225/91/100	2	N3.75x30	3	N3.75x30	28.9	28.9	11.6	14.5	14.5
SFWHI235/91/100	2	N3.75x30	3	N3.75x30	28.9	28.9	11.6	14.5	14.5
SFWHI240/91/100	2	N3.75x30	3	N3.75x30	28.9	28.9	11.6	14.5	14.5
SFWHI245/91/100	2	N3.75x30	3	N3.75x30	28.9	28.9	11.6	14.5	14.5
SFWHI300/91/100	2	N3.75x30	3	N3.75x30	28.9	28.9	11.6	14.5	14.5
SFWHI350/91/100	2	N3.75x30	3	N3.75x30	28.9	28.9	11.6	14.5	14.5
SFWHI400/91/100	2	N3.75x30	3	N3.75x30	28.9	28.9	11.6	14.5	14.5
SFWHI450/91/100	2	N3.75x30	3	N3.75x30	28.9	28.9	11.6	14.5	14.5
SFWHI195/96/100	2	N3.75x30	3	N3.75x30	28.9	28.9	11.6	14.5	14.5
SFWHI225/96/100	2	N3.75x30	3	N3.75x30	28.9	28.9	11.6	14.5	14.5
SFWHI235/96/100	2	N3.75x30	3	N3.75x30	28.9	28.9	11.6	14.5	14.5
SFWHI240/96/100	2	N3.75x30	3	N3.75x30	28.9	28.9	11.6	14.5	14.5
SFWHI245/96/100	2	N3.75x30	3	N3.75x30	28.9	28.9	11.6	14.5	14.5
SFWHI300/96/100	2	N3.75x30	3	N3.75x30	28.9	28.9	11.6	14.5	14.5
SFWHI350/96/100	2	N3.75x30	3	N3.75x30	28.9	28.9	11.6	14.5	14.5
SFWHI400/96/100	2	N3.75x30	3	N3.75x30	28.9	28.9	11.6	14.5	14.5
SFWHI195/100/1	2	N3.75x30	3	N3.75x30	28.9	28.9	11.6	14.5	14.5
SFWHI225/100/100	2	N3.75x30	3	N3.75x30	28.9	28.9	11.6	14.5	14.5
SFWHI235/100/1	2	N3.75x30	3	N3.75x30	28.9	28.9	11.6	14.5	14.5
SFWHI240/100/100	2	N3.75x30	3	N3.75x30	28.9	28.9	11.6	14.5	14.5
SFWHI245/100/1	2	N3.75x30	3	N3.75x30	28.9	28.9	11.6	14.5	14.5
SFWHI300/100/100	2	N3.75x30	3	N3.75x30	28.9	28.9	11.6	14.5	14.5
SFWHI350/100/1	2	N3.75x30	3	N3.75x30	28.9	28.9	11.6	14.5	14.5
SFWHI400/100/100	2	N3.75x30	3	N3.75x30	28.9	28.9	11.6	14.5	14.5
SFWHI450/100/1	2	N3.75x30	3	N3.75x30	28.9	28.9	11.6	14.5	14.5
SFWHI240/105/100	2	N3.75x30	3	N3.75x30	28.9	28.9	11.6	14.5	14.5
SFWHI300/105/1	2	N3.75x30	3	N3.75x30	28.9	28.9	11.6	14.5	14.5
SFWHI350/105/100	2	N3.75x30	3	N3.75x30	28.9	28.9	11.6	14.5	14.5
SFWHI195/120/1	2	N3.75x30	3	N3.75x30	28.9	28.9	11.6	14.5	14.5
SFWHI200/120/100	2	N3.75x30	3	N3.75x30	28.9	28.9	11.6	14.5	14.5
SFWHI225/120/1	2	N3.75x30	3	N3.75x30	28.9	28.9	11.6	14.5	14.5
SFWHI235/120/100	2	N3.75x30	3	N3.75x30	28.9	28.9	11.6	14.5	14.5
SFWHI240/120/1	2	N3.75x30	3	N3.75x30	28.9	28.9	11.6	14.5	14.5
SFWHI245/120/100	2	N3.75x30	3	N3.75x30	28.9	28.9	11.6	14.5	14.5
SFWHI300/120/1	2	N3.75x30	3	N3.75x30	28.9	28.9	11.6	14.5	14.5
SFWHI350/120/100	2	N3.75x30	3	N3.75x30	28.9	28.9	11.6	14.5	14.5
SFWHI400/120/1	2	N3.75x30	3	N3.75x30	28.9	28.9	11.6	14.5	14.5
SFWHI195/129/100	2	N3.75x30	3	N3.75x30	28.9	28.9	11.6	14.5	14.5
SFWHI225/129/1	2	N3.75x30	3	N3.75x30	28.9	28.9	11.6	14.5	14.5
SFWHI235/129/100	2	N3.75x30	3	N3.75x30	28.9	28.9	11.6	14.5	14.5

SFWHI - SAFETY FAST (WELDED) MASONRY RESTRAINT HANGER FOR I-JOISTS



References	Number of Fasteners				Characteristic Capacities [kN]		Safe Working Loads [kN]		
	Joist Fasteners		Mini Strap		R _{1,k}		R _{1,SWL}		
	Qty	Type	Qty	Type	3.5N/mm ² Solid LAC	7N/mm ² Solid DAC	2.8N/mm ² Solid AAC	3.5N/mm ² Solid LAC	7N/mm ² Solid DAC
SFWHI240/129/1	2	N3.75x30	3	N3.75x30	28.9	28.9	11.6	14.5	14.5
SFWHI245/129/1	2	N3.75x30	3	N3.75x30	28.9	28.9	11.6	14.5	14.5
SFWHI300/129/1	2	N3.75x30	3	N3.75x30	28.9	28.9	11.6	14.5	14.5
SFWHI350/129/1	2	N3.75x30	3	N3.75x30	28.9	28.9	11.6	14.5	14.5
SFWHI400/129/1	2	N3.75x30	3	N3.75x30	28.9	28.9	11.6	14.5	14.5
SFWHI184/135/1	2	N3.75x30	3	N3.75x30	28.9	28.9	11.6	14.5	14.5
SFWHI200/135/1	2	N3.75x30	3	N3.75x30	28.9	28.9	11.6	14.5	14.5
SFWHI225/135/1	2	N3.75x30	3	N3.75x30	28.9	28.9	11.6	14.5	14.5
SFWHI240/135/1	2	N3.75x30	3	N3.75x30	28.9	28.9	11.6	14.5	14.5
SFWHI245/135/1	2	N3.75x30	3	N3.75x30	28.9	28.9	11.6	14.5	14.5
SFWHI300/135/1	2	N3.75x30	3	N3.75x30	28.9	28.9	11.6	14.5	14.5
SFWHI350/135/1	2	N3.75x30	3	N3.75x30	28.9	28.9	11.6	14.5	14.5
SFWHI400/135/1	2	N3.75x30	3	N3.75x30	28.9	28.9	11.6	14.5	14.5
SFWHI450/135/1	2	N3.75x30	3	N3.75x30	28.9	28.9	11.6	14.5	14.5
SFWHI225/142/1	2	N3.75x30	3	N3.75x30	28.9	28.9	11.6	14.5	14.5
SFWHI240/142/1	2	N3.75x30	3	N3.75x30	28.9	28.9	11.6	14.5	14.5
SFWHI300/142/1	2	N3.75x30	3	N3.75x30	28.9	28.9	11.6	14.5	14.5
SFWHI350/142/1	2	N3.75x30	3	N3.75x30	28.9	28.9	11.6	14.5	14.5
SFWHI400/142/1	2	N3.75x30	3	N3.75x30	28.9	28.9	11.6	14.5	14.5
SFWHI195/146/1	2	N3.75x30	3	N3.75x30	28.9	28.9	11.6	14.5	14.5
SFWHI225/146/1	2	N3.75x30	3	N3.75x30	28.9	28.9	11.6	14.5	14.5
SFWHI235/146/1	2	N3.75x30	3	N3.75x30	28.9	28.9	11.6	14.5	14.5
SFWHI245/146/1	2	N3.75x30	3	N3.75x30	28.9	28.9	11.6	14.5	14.5
SFWHI300/146/1	2	N3.75x30	3	N3.75x30	28.9	28.9	11.6	14.5	14.5
SFWHI350/146/1	2	N3.75x30	3	N3.75x30	28.9	28.9	11.6	14.5	14.5
SFWHI400/146/1	2	N3.75x30	3	N3.75x30	28.9	28.9	11.6	14.5	14.5
SFWHI195/152/1	2	N3.75x30	3	N3.75x30	28.9	28.9	11.6	14.5	14.5
SFWHI225/152/1	2	N3.75x30	3	N3.75x30	28.9	28.9	11.6	14.5	14.5
SFWHI235/152/1	2	N3.75x30	3	N3.75x30	28.9	28.9	11.6	14.5	14.5
SFWHI240/152/1	2	N3.75x30	3	N3.75x30	28.9	28.9	11.6	14.5	14.5
SFWHI300/152/1	2	N3.75x30	3	N3.75x30	28.9	28.9	11.6	14.5	14.5
SFWHI350/152/1	2	N3.75x30	3	N3.75x30	28.9	28.9	11.6	14.5	14.5
SFWHI400/152/1	2	N3.75x30	3	N3.75x30	28.9	28.9	11.6	14.5	14.5
SFWHI450/152/1	2	N3.75x30	3	N3.75x30	28.9	28.9	11.6	14.5	14.5
SFWHI195/180/1	2	N3.75x30	3	N3.75x30	28.9	28.9	11.6	14.5	14.5
SFWHI200/180/1	2	N3.75x30	3	N3.75x30	28.9	28.9	11.6	14.5	14.5
SFWHI225/180/1	2	N3.75x30	3	N3.75x30	28.9	28.9	11.6	14.5	14.5
SFWHI235/180/1	2	N3.75x30	3	N3.75x30	28.9	28.9	11.6	14.5	14.5
SFWHI245/180/1	2	N3.75x30	3	N3.75x30	28.9	28.9	11.6	14.5	14.5
SFWHI300/180/1	2	N3.75x30	3	N3.75x30	28.9	28.9	11.6	14.5	14.5
SFWHI350/180/1	2	N3.75x30	3	N3.75x30	28.9	28.9	11.6	14.5	14.5
SFWHI400/180/1	2	N3.75x30	3	N3.75x30	28.9	28.9	11.6	14.5	14.5
SFWHI450/180/1	2	N3.75x30	3	N3.75x30	28.9	28.9	11.6	14.5	14.5
SFWHI225/184/1	2	N3.75x30	3	N3.75x30	28.9	28.9	11.6	14.5	14.5
SFWHI240/184/1	2	N3.75x30	3	N3.75x30	28.9	28.9	11.6	14.5	14.5
SFWHI300/184/1	2	N3.75x30	3	N3.75x30	28.9	28.9	11.6	14.5	14.5
SFWHI350/184/1	2	N3.75x30	3	N3.75x30	28.9	28.9	11.6	14.5	14.5
SFWHI400/184/1	2	N3.75x30	3	N3.75x30	28.9	28.9	11.6	14.5	14.5
SFWHI195/196/1	2	N3.75x30	3	N3.75x30	28.9	28.9	11.6	14.5	14.5
SFWHI225/196/1	2	N3.75x30	3	N3.75x30	28.9	28.9	11.6	14.5	14.5
SFWHI235/196/1	2	N3.75x30	3	N3.75x30	28.9	28.9	11.6	14.5	14.5
SFWHI240/196/1	2	N3.75x30	3	N3.75x30	28.9	28.9	11.6	14.5	14.5
SFWHI245/196/1	2	N3.75x30	3	N3.75x30	28.9	28.9	11.6	14.5	14.5
SFWHI300/196/1	2	N3.75x30	3	N3.75x30	28.9	28.9	11.6	14.5	14.5
SFWHI350/196/1	2	N3.75x30	3	N3.75x30	28.9	28.9	11.6	14.5	14.5

SFWHI - SAFETY FAST (WELDED) MASONRY RESTRAINT HANGER FOR I-JOISTS

References	Number of Fasteners				Characteristic Capacities [kN]		Safe Working Loads [kN]		
	Joist Fasteners		Mini Strap		R _{1,k}		R _{1,SWL}		
	Qty	Type	Qty	Type	3.5N/mm ² Solid LAC	7N/mm ² Solid DAC	2.8N/mm ² Solid AAC	3.5N/mm ² Solid LAC	7N/mm ² Solid DAC
SFWHI400/196/100	2	N3.75x30	3	N3.75x30	28.9	28.9	11.6	14.5	14.5
SFWHI450/196/1	2	N3.75x30	3	N3.75x30	28.9	28.9	11.6	14.5	14.5

INSTALLATION

Installation

- Use all specified nails.
- Build masonry to required level, ensuring any coursing bricks or blocks are at least one course below the supporting block, and leave to cure.
- Place the Safety Fast Restraint Hanger over the inner leaf of block work, ensuring the bearing plate is fully located onto the top of the masonry, sitting tight against the front face and top of the block work.
- Sit the floor joist into the masonry hanger and ensure all joists are correctly installed. The joist should be tight into the back of the hanger where possible. The maximum gap between the back of the hanger and the end of the joist is 6mm.
- Clip the Safety Fast Mini Strap onto the restraining hooks on either side of the hanger and nail to the side face of the joist with 3.75 x 30mm square twist nails. **INSTALL ONLY ONE STRAP PER HANGER.**

General Installation Notes

- The floor decking may be stored on the joists provided the load is uniformly distributed between the several joists and does not exceed the hanger or joist capacities. Refer to joist manufacturer or supplier for joist capacity and maximum construction loads.
- The floor decking must be securely attached to each joist before additional loads can be placed on the system.
- Floor decking and block work is to be cut where necessary to fit around the upstand stiffeners.
- Pallets of blocks or other construction materials should be placed onto the scaffolding and NOT directly onto the floor. The materials can then be evenly distributed around the floor manually, ensuring hanger or joist capacities are not exceeded.