

## Ficha técnica

**SIMPSON****Strong-Tie**

FM-X5

### Cavilha de nylon comprida flexível

A cavilha de nylon comprida FM-X5 é ideal para fixar elementos a qualquer tipo de suporte oco ou sólido que requeira ajuste manual durante a instalação, tais como molduras de janela ou porta.

A cavilha é fornecida pré-montada com um parafuso de cabeça de embeber ou um parafuso de cabeça sextavada.

## Características

### Matéria

- Cavilha : nylon,
- Parafuso : Aço eletrolgalvanizado.

### Vantagens

#### Ganho de tempo:

- Cavilha e parafusos pré-montados
- Instalação através do elemento a fixar
- 8 asas que impedem a rotação no buraco de perfuração
- Nylon flexível e binário de aperto reduzido, permitindo um ajuste manual
- A cavilha de poliamida PA6 garante uma muito boa resistência ao tempo

## Aplicações

### Áreas de utilização

- Fixação de varas ou ripas
- Fixação de esquadros simples
- Fixação de carpintaria
- Fixação de carris e braçadeiras para cabos e tubos
- Fixação de revestimentos finos em fachadas exteriores e interiores.

### Suporte

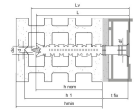
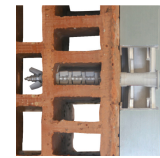
- Betão não fissurado,
- Betão celular,
- Alvenaria de blocos ocos e maciços,
- Pedra natural.



FM-X5  
Cavilha de nylon comprida flexível

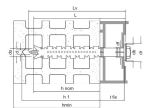
## Dados técnicos

### Dimensões



Referência	Product Reference	Hole diameter x anchor length [d <sub>o</sub> xL] [mm]	Max. fixture thickness [t <sub>fix</sub> ] [mm]	Min. hole depth [h <sub>1</sub> ] [mm]	Nominal embedment depth [h <sub>nom</sub> ] [mm]	Min. support thickness* [h <sub>min</sub> ] [mm]	Hole diameter in fixture [d <sub>f</sub> ] [mm]	Screw diameter [d] [mm]	Screw length [L <sub>v</sub> ] [mm]	Bit	Qty per box	Qty per outer box
64301B0808000	FM-X5	Ø8x80	10	80	70	120	8.5	6	85	T30	100	1000
64301B0810000		Ø8x100	30	80	70	120	8.5	6	105	T30	50	500
64301B0812000		Ø8x120	50	80	70	120	8.5	6	125	T30	50	500
64301B0815000		Ø8x150	80	80	70	120	8.5	6	155	T30	50	-
64301B1008500		Ø10x85	15	80	70	120	10.5	7	90	T40	50	500
64301B1010000		Ø10x100	30	80	70	120	10.5	7	105	T40	50	500
64301B1011500		Ø10x115	45	80	70	120	10.5	7	120	T40	50	500
64301B1013500		Ø10x135	65	80	70	120	10.5	7	140	T40	50	200
64301B1016000		Ø10x160	90	80	70	120	10.5	7	165	T40	50	200
64301B1020000		Ø10x200	130	80	70	120	10.5	7	205	T40	50	-
64301B1023000		Ø10x230	160	80	70	120	10.5	7	235	T40	50	-

\* Including plaster



### Product Dimensions Hex Head Screw

Referência	Product Reference	Hole diameter x anchor length [d <sub>o</sub> xL] [mm]	Max. fixture thickness [t <sub>fix</sub> ] [mm]	Min. hole depth [h <sub>1</sub> ] [mm]	Nominal embedment depth [h <sub>nom</sub> ] [mm]	Min. support thickness* [h <sub>min</sub> ] [mm]	Hole diameter in fixture [d <sub>f</sub> ] [mm]	Washer diameter [d <sub>w</sub> ] [mm]	Screw diameter [d] [mm]	Screw length [L <sub>v</sub> ] [mm]	Wrenc [SW] [mm]
64302B1008500	FM-X5	Ø10x85	15	80	70	120	10.5	19	7	90	13
64302B1010000		Ø10x100	30	80	70	120	10.5	19	7	105	13
64302B1011500		Ø10x115	45	80	70	120	10.5	19	7	120	13
64302B1013500		Ø10x135	65	80	70	120	10.5	19	7	140	13
64302B1016000		Ø10x160	90	80	70	120	10.5	19	7	165	13

\* Including plaster

FM-X5

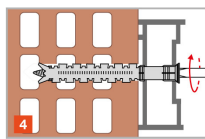
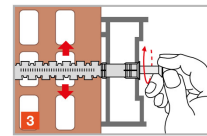
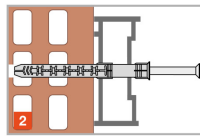
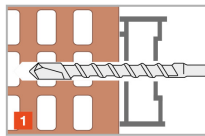
**Cavilha de nylon comprida flexível**

Design capacities - single anchor - no edge distances

Referência	Product Reference	Hole diameter x anchor length [d <sub>o</sub> xL] [mm]	Design capacities - single anchor - no edge distances								
			Design capacity								Bending moment M <sub>Rd</sub> [Nm]
			Tension - NRd				Shear - VRd				
			Non-cracked concrete C12/15 [kN]	Non-cracked concrete C16/20 [kN]	Autoclaved aerated concrete AAC [kN]	Solid brick [kN]	Non-cracked concrete C12/15 [kN]	Non-cracked concrete C16/20 [kN]	Autoclaved aerated concrete AAC [kN]	Solid brick [kN]	
64301B0808000	FM-X5	Ø8x80	0.8	1.4	0.3	1.4	0.8	1.4	0.3	1.4	7
64301B0810000	FM-X5	Ø8x100	0.8	1.4	0.3	1.4	0.8	1.4	0.3	1.4	7
64301B0812000	FM-X5	Ø8x120	0.8	1.4	0.3	1.4	0.8	1.4	0.3	1.4	7
64301B0815000	FM-X5	Ø8x150	0.8	1.4	0.3	1.4	0.8	1.4	0.3	1.4	7
64301B1008500	FM-X5	Ø10x85	1.4	1.9	0.3	1.4	1.4	1.9	0.3	1.4	13.47
64301B1010000	FM-X5	Ø10x100	1.4	1.9	0.3	1.4	1.4	1.9	0.3	1.4	13.47
64301B1011500	FM-X5	Ø10x115	1.4	1.9	0.3	1.4	1.4	1.9	0.3	1.4	13.47
64301B1013500	FM-X5	Ø10x135	1.4	1.9	0.3	1.4	1.4	1.9	0.3	1.4	13.47
64301B1016000	FM-X5	Ø10x160	1.4	1.9	0.3	1.4	1.4	1.9	0.3	1.4	13.47
64301B1020000	FM-X5	Ø10x200	1.4	1.9	0.3	1.4	1.4	1.9	0.3	1.4	13.47
64301B1023000	FM-X5	Ø10x230	1.4	1.9	0.3	1.4	1.4	1.9	0.3	1.4	13.47
64302B1008500	FM-X5	Ø10x85	1.4	1.9	0.3	1.4	1.4	1.9	0.3	1.4	13.47
64302B1010000	FM-X5	Ø10x100	1.4	1.9	0.3	1.4	1.4	1.9	0.3	1.4	13.47
64302B1011500	FM-X5	Ø10x115	1.4	1.9	0.3	1.4	1.4	1.9	0.3	1.4	13.47
64302B1013500	FM-X5	Ø10x135	1.4	1.9	0.3	1.4	1.4	1.9	0.3	1.4	13.47
64302B1016000	FM-X5	Ø10x160	1.4	1.9	0.3	1.4	1.4	1.9	0.3	1.4	13.47

FM-X5  
Cavilha de nylon comprida flexível

## Execução



Spacings and edge distances

Referência	Product Reference	Hole diameter x anchor length [d <sub>o</sub> xL] [mm]	Spacings and edge distances									
			Non-cracked concrete C12/15				Non-cracked concrete C16/20				Autoclaved aerated c AAC	
			Min. edge distance [c <sub>min</sub> ] [mm]	Min. spacing [s <sub>min</sub> ] [mm]	Characteristic edge distance [c <sub>cr,N</sub> ] [mm]	Minimum thickness of support [h <sub>min</sub> ] [mm]	Min. edge distance [c <sub>min</sub> ] [mm]	Min. spacing [s <sub>min</sub> ] [mm]	Characteristic edge distance [c <sub>cr,N</sub> ] [mm]	Minimum thickness of support [h <sub>min</sub> ] [mm]	Min. edge distance [c <sub>min</sub> ] [mm]	Min. spacing [s <sub>min</sub> ] [mm]
64301B0808000	FM-X5	Ø8x80	80	80	140	100	60	60	100	100	100	250
64301B0810000	FM-X5	Ø8x100	80	80	140	100	60	60	100	100	100	250
64301B0812000	FM-X5	Ø8x120	80	80	140	100	60	60	100	100	100	250
64301B0815000	FM-X5	Ø8x150	80	80	140	100	60	60	100	100	100	250
64301B1008500	FM-X5	Ø10x85	80	80	140	100	60	60	100	100	100	250
64301B1010000	FM-X5	Ø10x100	80	80	140	100	60	60	100	100	100	250
64301B1011500	FM-X5	Ø10x115	80	80	140	100	60	60	100	100	100	250
64301B1013500	FM-X5	Ø10x135	80	80	140	100	60	60	100	100	100	250
64301B1016000	FM-X5	Ø10x160	80	80	140	100	60	60	100	100	100	250
64301B1020000	FM-X5	Ø10x200	80	80	140	100	60	60	100	100	100	250
64301B1023000	FM-X5	Ø10x230	80	80	140	100	60	60	100	100	100	250
64302B1008500	FM-X5	Ø10x85	80	80	140	100	60	60	100	100	100	250
64302B1010000	FM-X5	Ø10x100	80	80	140	100	60	60	100	100	100	250
64302B1011500	FM-X5	Ø10x115	80	80	140	100	60	60	100	100	100	250
64302B1013500	FM-X5	Ø10x135	80	80	140	100	60	60	100	100	100	250
64302B1016000	FM-X5	Ø10x160	80	80	140	100	60	60	100	100	100	250

# Ficha técnica

**SIMPSON****Strong-Tie**

FM-X5

**Cavilha de nylon comprida flexível**

## Installation data

Referência	Product Reference	Hole diameter x anchor length [d <sub>o</sub> xL] [mm]	Installation data			
			Ø drilling hole [d0] [mm]	Min. drill depth [h1] [mm]	Ø drilling fixture [df] [mm]	Wrench size [SW] [mm]
64301B0808000	FM-X5	Ø8x80	8	80	8.5	-
64301B0810000	FM-X5	Ø8x100	8	80	8.5	-
64301B0812000	FM-X5	Ø8x120	8	80	8.5	-
64301B0815000	FM-X5	Ø8x150	8	80	8.5	-
64301B1008500	FM-X5	Ø10x85	10	80	10.5	-
64301B1010000	FM-X5	Ø10x100	10	80	10.5	-
64301B1011500	FM-X5	Ø10x115	10	80	10.5	-
64301B1013500	FM-X5	Ø10x135	10	80	10.5	-
64301B1016000	FM-X5	Ø10x160	10	80	10.5	-
64301B1020000	FM-X5	Ø10x200	10	80	10.5	-
64301B1023000	FM-X5	Ø10x230	10	80	8.5	-
64302B1008500	FM-X5	Ø10x85	10	80	10.5	13
64302B1010000	FM-X5	Ø10x100	10	80	10.5	13
64302B1011500	FM-X5	Ø10x115	10	80	10.5	13
64302B1013500	FM-X5	Ø10x135	10	80	10.5	13
64302B1016000	FM-X5	Ø10x160	10	80	10.5	13

ZAC des Quatre Chemins - 85400 Sainte Gemme la Plaine -  
France  
tél : +33 2 51 28 44 00  
fax : +33 2 51 28 44 01

Copyright by Simpson Strong-Tie®

As informações contidas neste site são propriedade de Simpson Strong-Tie®

São apenas válidas se associadas aos produtos comercializados pela Simpson Strong-Tie®

FM-X5

**Cavilha de nylon comprida flexível**[www.strongtie.pt](http://www.strongtie.pt)**SIMPSON****Strong-Tie**

2024-04-19