

FM-X5 A4

Lange, flexibele nylonplug - Rvs A4

De lange nylonplug FM-X5 is ideaal voor het bevestigen van elementen op elk type holle of volle ondergrond die tijdens de installatie handmatig moet worden afgesteld, zoals venster- of deurramen of -omlijstingen.

De plug wordt voorgemonteerd geleverd met een schroef met verzonken kop van A4 roestvrij staal voor buitengebruik.

Kenmerken

Materiaal

- Plug : nylon,
- Schroef : Roestvrij staal A4.

Voordelen

Tijdwinst:

- Voorgemonteerde plug en schroef
- Montage door het te bevestigen element
- 8 vleugels die rotatie in het boorgat voorkomen
- Flexibel nylon en laag aandraaimoment, waardoor handmatige afstelling mogelijk is
- Plug van polyamide PA6 garandeert een zeer goede duurzaamheid

Toepassingen

Toepassingsgebieden

- Bevestiging van kepers of steunlatten
- Bevestiging van enkele hoekijzers
- Bevestiging van ramen en deuren
- Bevestiging van rails en klemmen voor kabels en leidingen,
- Bevestiging van dunne bekledingen op gevels.

Ondergrond

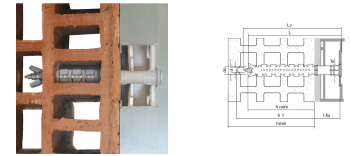
- Ongescheurd beton,
- Cellenbeton,
- Hol en vol metselwerk,
- Natuursteen.



FM-X5 A4
Lange, flexibele nylonplug - Rvs A4

Technische gegevens

Product Dimensions Countersunk Screw



Referentie	Product Reference	Hole diameter x anchor length [d _o xL] [mm]	Max. Fixture thickness [t _{fix}] [mm]	Min. hole depth [h ₁] [mm]	Nominal embedment depth [h _{nom}] [mm]	Min. support thickness [h _{min}] [mm]	Hole diameter in fixture [d _f] [mm]	Screw diameter [d] [mm]	Screw length [L _v] [mm]	Bit	Qty per box	Qty per outer box
6430100808000	FM-X5 A4	Ø8x80	10	80	70	120	8.5	6	85	T30	100	1000
6430100812000	FM-X5 A4	Ø8x120	50	80	70	120	8.5	6	125	T30	50	500

Afmetingen

Table "Afmetingen" cannot be displayed : no references available.

Design capacities - single anchor - no edge distances

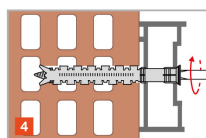
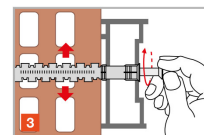
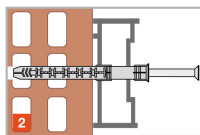
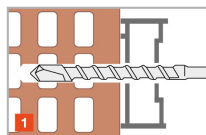
Referentie	Design capacities - single anchor - no edge distances								
	Design capacity								
	Tension - N _{Rd}				Shear - V _{Rd}				Bending moment MRd [Nm]
	Non-cracked concrete C12/15 [kN]	Non-cracked concrete C16/20 [kN]	Autoclaved aerated concrete AAC [kN]	Solid brick [kN]	Non-cracked concrete C12/15 [kN]	Non-cracked concrete C16/20 [kN]	Autoclaved aerated concrete AAC [kN]	Solid brick [kN]	
6430100808000	0.8	1.4	0.3	1.4	0.8	1.4	0.3	1.4	7.7
6430100812000	0.8	1.4	0.3	1.4	0.8	1.4	0.3	1.4	7.7

- The design loads have been calculated using the partial safety factors for resistances stated in ETA-approval(s). The loading figures are valid for unreinforced concrete and reinforced concrete with a rebar spacing $s \geq 15$ cm (any diameter) or with a rebar spacing $s \geq 10$ cm, if the rebar diameter is 10mm or smaller.
- The figures for shear are based on a single anchor without influence of concrete edges. For anchorages close to edges ($c \leq \max [10 \text{ hef}; 60d]$) the concrete edge failure shall be checked per ETAG 001, Annex C, design method A.
- Concrete is considered non-cracked when the tensile stress within the concrete is $\sigma_L + \sigma_R \leq 0$. In the absence of detailed verification $\sigma_R = 3 \text{ N/mm}^2$ can be assumed (σ_L equals the tensile stress within the concrete induced by external loads, anchors loads included).

*Not covered by ETA-11/0080

FM-X5 A4
Lange, flexibele nylonplug - Rvs A4

Plaatsing



Installation data

Referentie	Product Reference	Hole diameter x anchor length [d _o xL] [mm]	Ø drilling hole [d0] [mm]	Min. drill depth [h1] [mm]	Ø drilling fixture [df] [mm]	Wrench size [SW] [mm]
6430100808000	FM-X5 A4	Ø8x80	8	80	8.5	-
6430100812000	FM-X5 A4	Ø8x120	8	80	8.5	-

Spacings and edge distances

Referentie	Product Reference	Hole diameter x anchor length [d _o xL] [mm]	Spacings and edge distances											
			Non-cracked concrete C12/15				Non-cracked concrete C16/20				Autoclaved aerated c AAC			
			Min. edge distance [cmin] [mm]	Min. spacing [smin] [mm]	Characteristic edge distance [ccr,N] [mm]	Minimum thickness of support [hmin] [mm]	Min. edge distance [cmin] [mm]	Min. spacing [smin] [mm]	Characteristic edge distance [ccr,N] [mm]	Minimum thickness of support [hmin] [mm]	Min. edge distance [cmin] [mm]	Min. spacing [smin] [mm]	Minimum thickness of support [hmin] [mm]	
6430100808000	FM-X5 A4	Ø8x80	80	80	140	100	60	60	100	100	100	100	250	
6430100812000	FM-X5 A4	Ø8x120	80	80	140	100	60	60	100	100	100	100	250	

