

FM-X5

Lange, flexibele nylonplug

De lange nylonplug FM-X5 is ideaal voor het bevestigen van elementen op elk type holle of volle ondergrond die tijdens de installatie handmatig moet worden afgesteld, zoals venster- of deurramen of -omlijstingen. De plug wordt voorgesmeten geleverd met een schroef met verzonken kop of zeskantkop.

Kenmerken

Materiaal

- Plug : nylon,
- Schroef : elektrolytisch verzinkt staal.

Voordelen

Tijdwinst:

- Voorgesmeten plug en schroef
- Montage door het te bevestigen element
- 8 vleugels die rotatie in het boorgat voorkomen
- Flexibel nylon en laag aandraaimoment, waardoor handmatige afstelling mogelijk is
- Plug van polyamide PA6 garandeert een zeer goede duurzaamheid

Toepassingen

Toepassingsgebieden

- Bevestiging van kepers of steunlatten
- Bevestiging van enkele hoekijzers
- Bevestiging van ramen en deuren
- Bevestiging van rails en klemmen voor kabels en leidingen,
- Bevestiging van dunne bekledingen op gevels.

Ondergrond

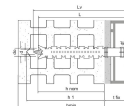
- Ongescheurd beton,
- Cellenbeton,
- Hol en vol metselwerk,
- Natuursteen.



FM-X5
Lange, flexibele nylonplug

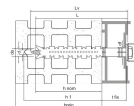
Technische gegevens

Afmetingen



Referentie	Product Reference	Hole diameter x anchor length [d _o xL] [mm]	Max. fixture thickness [t _{fix}] [mm]	Min. hole depth [h ₁] [mm]	Nominal embedment depth [h _{nom}] [mm]	Min. support thickness* [h _{min}] [mm]	Hole diameter in fixture [d _f] [mm]	Screw diameter [d] [mm]	Screw length [L _v] [mm]	Bit	Qty per box	Qty per outer box
64301B0808000	FM-X5	Ø8x80	10	80	70	120	8.5	6	85	T30	100	1000
64301B0810000		Ø8x100	30	80	70	120	8.5	6	105	T30	50	500
64301B0812000		Ø8x120	50	80	70	120	8.5	6	125	T30	50	500
64301B0815000		Ø8x150	80	80	70	120	8.5	6	155	T30	50	-
64301B1008500		Ø10x85	15	80	70	120	10.5	7	90	T40	50	500
64301B1010000		Ø10x100	30	80	70	120	10.5	7	105	T40	50	500
64301B1011500		Ø10x115	45	80	70	120	10.5	7	120	T40	50	500
64301B1013500		Ø10x135	65	80	70	120	10.5	7	140	T40	50	200
64301B1016000		Ø10x160	90	80	70	120	10.5	7	165	T40	50	200
64301B1020000		Ø10x200	130	80	70	120	10.5	7	205	T40	50	-
64301B1023000		Ø10x230	160	80	70	120	10.5	7	235	T40	50	-

* Including plaster



Product Dimensions Hex Head Screw

Referentie	Product Reference	Hole diameter x anchor length [d _o xL] [mm]	Max. fixture thickness [t _{fix}] [mm]	Min. hole depth [h ₁] [mm]	Nominal embedment depth [h _{nom}] [mm]	Min. support thickness* [h _{min}] [mm]	Hole diameter in fixture [d _f] [mm]	Washer diameter [d _w] [mm]	Screw diameter [d] [mm]	Screw length [L _v] [mm]	Wrenc [SW] [mm]
64302B1008500	FM-X5	Ø10x85	15	80	70	120	10.5	19	7	90	13
64302B1010000		Ø10x100	30	80	70	120	10.5	19	7	105	13
64302B1011500		Ø10x115	45	80	70	120	10.5	19	7	120	13
64302B1013500		Ø10x135	65	80	70	120	10.5	19	7	140	13
64302B1016000		Ø10x160	90	80	70	120	10.5	19	7	165	13

* Including plaster

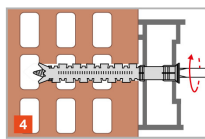
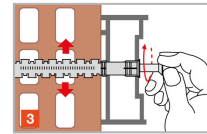
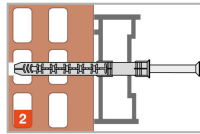
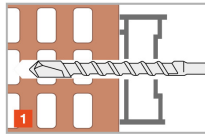
FM-X5 Lange, flexibele nylonplug

Design capacities - single anchor - no edge distances

Referentie	Product Reference	Hole diameter x anchor length [d _o xL] [mm]	Design capacities - single anchor - no edge distances								
			Design capacity								Bending moment M _{Rd} [Nm]
			Tension - NRd				Shear - VRd				
			Non-cracked concrete C12/15 [kN]	Non-cracked concrete C16/20 [kN]	Autoclaved aerated concrete AAC [kN]	Solid brick [kN]	Non-cracked concrete C12/15 [kN]	Non-cracked concrete C16/20 [kN]	Autoclaved aerated concrete AAC [kN]	Solid brick [kN]	
64301B0808000	FM-X5	Ø8x80	0.8	1.4	0.3	1.4	0.8	1.4	0.3	1.4	7
64301B0810000	FM-X5	Ø8x100	0.8	1.4	0.3	1.4	0.8	1.4	0.3	1.4	7
64301B0812000	FM-X5	Ø8x120	0.8	1.4	0.3	1.4	0.8	1.4	0.3	1.4	7
64301B0815000	FM-X5	Ø8x150	0.8	1.4	0.3	1.4	0.8	1.4	0.3	1.4	7
64301B1008500	FM-X5	Ø10x85	1.4	1.9	0.3	1.4	1.4	1.9	0.3	1.4	13.47
64301B1010000	FM-X5	Ø10x100	1.4	1.9	0.3	1.4	1.4	1.9	0.3	1.4	13.47
64301B1011500	FM-X5	Ø10x115	1.4	1.9	0.3	1.4	1.4	1.9	0.3	1.4	13.47
64301B1013500	FM-X5	Ø10x135	1.4	1.9	0.3	1.4	1.4	1.9	0.3	1.4	13.47
64301B1016000	FM-X5	Ø10x160	1.4	1.9	0.3	1.4	1.4	1.9	0.3	1.4	13.47
64301B1020000	FM-X5	Ø10x200	1.4	1.9	0.3	1.4	1.4	1.9	0.3	1.4	13.47
64301B1023000	FM-X5	Ø10x230	1.4	1.9	0.3	1.4	1.4	1.9	0.3	1.4	13.47
64302B1008500	FM-X5	Ø10x85	1.4	1.9	0.3	1.4	1.4	1.9	0.3	1.4	13.47
64302B1010000	FM-X5	Ø10x100	1.4	1.9	0.3	1.4	1.4	1.9	0.3	1.4	13.47
64302B1011500	FM-X5	Ø10x115	1.4	1.9	0.3	1.4	1.4	1.9	0.3	1.4	13.47
64302B1013500	FM-X5	Ø10x135	1.4	1.9	0.3	1.4	1.4	1.9	0.3	1.4	13.47
64302B1016000	FM-X5	Ø10x160	1.4	1.9	0.3	1.4	1.4	1.9	0.3	1.4	13.47

FM-X5
Lange, flexibele nylonplug

Plaatsing



Spacings and edge distances

Referentie	Product Reference	Hole diameter x anchor length [d _o xL] [mm]	Spacings and edge distances									
			Non-cracked concrete C12/15				Non-cracked concrete C16/20				Autoclaved aerated c AAC	
			Min. edge distance [cmin] [mm]	Min. spacing [smin] [mm]	Characteristic edge distance [ccr,N] [mm]	Minimum thickness of support [hmin] [mm]	Min. edge distance [cmin] [mm]	Min. spacing [smin] [mm]	Characteristic edge distance [ccr,N] [mm]	Minimum thickness of support [hmin] [mm]	Min. edge distance [cmin] [mm]	Min. spacing [smin] [mm]
64301B0808000	FM-X5	Ø8x80	80	80	140	100	60	60	100	100	100	250
64301B0810000	FM-X5	Ø8x100	80	80	140	100	60	60	100	100	100	250
64301B0812000	FM-X5	Ø8x120	80	80	140	100	60	60	100	100	100	250
64301B0815000	FM-X5	Ø8x150	80	80	140	100	60	60	100	100	100	250
64301B1008500	FM-X5	Ø10x85	80	80	140	100	60	60	100	100	100	250
64301B1010000	FM-X5	Ø10x100	80	80	140	100	60	60	100	100	100	250
64301B1011500	FM-X5	Ø10x115	80	80	140	100	60	60	100	100	100	250
64301B1013500	FM-X5	Ø10x135	80	80	140	100	60	60	100	100	100	250
64301B1016000	FM-X5	Ø10x160	80	80	140	100	60	60	100	100	100	250
64301B1020000	FM-X5	Ø10x200	80	80	140	100	60	60	100	100	100	250
64301B1023000	FM-X5	Ø10x230	80	80	140	100	60	60	100	100	100	250
64302B1008500	FM-X5	Ø10x85	80	80	140	100	60	60	100	100	100	250
64302B1010000	FM-X5	Ø10x100	80	80	140	100	60	60	100	100	100	250
64302B1011500	FM-X5	Ø10x115	80	80	140	100	60	60	100	100	100	250
64302B1013500	FM-X5	Ø10x135	80	80	140	100	60	60	100	100	100	250
64302B1016000	FM-X5	Ø10x160	80	80	140	100	60	60	100	100	100	250

FM-X5

Lange, flexibele nylonplug

Installation data

Referentie	Product Reference	Hole diameter x anchor length [d _o xL] [mm]	Installation data			
			Ø drilling hole [d0] [mm]	Min. drill depth [h1] [mm]	Ø drilling fixture [df] [mm]	Wrench size [SW] [mm]
64301B0808000	FM-X5	Ø8x80	8	80	8.5	-
64301B0810000	FM-X5	Ø8x100	8	80	8.5	-
64301B0812000	FM-X5	Ø8x120	8	80	8.5	-
64301B0815000	FM-X5	Ø8x150	8	80	8.5	-
64301B1008500	FM-X5	Ø10x85	10	80	10.5	-
64301B1010000	FM-X5	Ø10x100	10	80	10.5	-
64301B1011500	FM-X5	Ø10x115	10	80	10.5	-
64301B1013500	FM-X5	Ø10x135	10	80	10.5	-
64301B1016000	FM-X5	Ø10x160	10	80	10.5	-
64301B1020000	FM-X5	Ø10x200	10	80	10.5	-
64301B1023000	FM-X5	Ø10x230	10	80	8.5	-
64302B1008500	FM-X5	Ø10x85	10	80	10.5	13
64302B1010000	FM-X5	Ø10x100	10	80	10.5	13
64302B1011500	FM-X5	Ø10x115	10	80	10.5	13
64302B1013500	FM-X5	Ø10x135	10	80	10.5	13
64302B1016000	FM-X5	Ø10x160	10	80	10.5	13

ZAC des Quatre Chemins - 85400 Sainte Gemme la Plaine - France
 tél : +33 2 51 28 44 00
 fax : +33 2 51 28 44 01

FM-X5
Lange, flexibele nylonplug



Copyright by Simpson Strong-Tie®
 Informatie weergegeven op deze website zijn eigendom van Simpson Strong-Tie®
 Deze zijn enkel geldig in associatie met de gecommmercialiseerde Simpson Strong-Tie® producten

2024-05-08

www.strongtie.nl