

TPP A2

Inslagplug met gewelfde kraag - Inox A2

De inslagplug met gewelfde kraag TPP A2 is geschikt voor het snel bevestigen van lichte elementen op diverse ondergronden voor buitengebruik.

De nylonplug beperkt warmteoverdracht en de voorgemonteerde nagel zet de plug uit wanneer erop wordt geklopt.

Kenmerken

Materiaal

- Plug : grijs nylon,
- Schroeven : elektrolytisch verzinkt staal.

Voordelen

- Zeer eenvoudige montage en demontage dankzij de nagel met schroefdraad,
- Uitzetting door schroeven of hameren,
- Perfect contact met het materiaal, gelijk met het oppervlak,
- Zigzaggleuf om scheefstand van de nagel te voorkomen.

Toepassingen

Toepassingsgebieden

- Bevestiging van kepers of steunlatten,
- Bevestiging van enkele hoekijzers en ramen en deuren,
- Bevestiging van rails en klemmen voor kabels en leidingen,
- Bevestiging van dunne bekledingen op buiten- en binnengevels.

Ondergrond

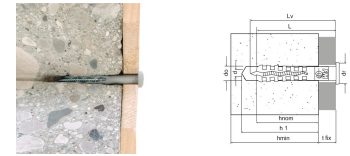
- Ongescheurd beton,
- Hol en vol metselwerk,
- Cellenbeton.



TPP A2
Inslagplug met gewelfde kraag - Inox A2

Technische gegevens

Product Dimensions



Referentie	Product Reference	Hole diameter x anchor length [d _o xL] [mm]	Fixture thickness [t _{fix}] [mm]	Min. hole depth [h ₁] [mm]	Nominal embedment depth [h _{nom}] [mm]	Min. support thickness [h _{min}] [mm]	Screw diameter [d] [mm]	Screw length [L _v] [mm]	Collar diameter [d _c] [mm]	Qty per box	Qty per outer box
62701x0604000	TPP A2	Ø6x40	10	40	30	100	3.8	45	10	200	1600
62701x0606000		Ø6x60	30	40	30	100	3.8	65	10	100	1000

Design capacities - single anchor - no edge distances

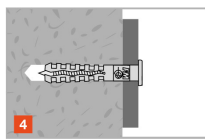
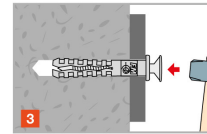
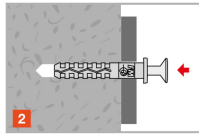
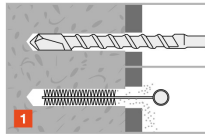
Referentie	Design capacity - Non-cracked concrete (3)				
	Tension - NRd (1)		Shear - VRd (1-2)		Bending moment MRd [Nm]
	C20/25 [kN]	Solid brick [kN]	C20/25 [kN]	Solid brick [kN]	
62701x0604000	0.6	0.36	0.6	0.6	-
62701x0606000	0.6	0.36	0.6	0.6	-

- The design loads have been calculated using the partial safety factors for resistances stated in ETA-approval(s). The loading figures are valid for unreinforced concrete and reinforced concrete with a rebar spacing $s \geq 15$ cm (any diameter) or with a rebar spacing $s \geq 10$ cm, if the rebar diameter is 10mm or smaller.
- The figures for shear are based on a single anchor without influence of concrete edges. For anchorages close to edges ($c \leq \max [10 \text{ hef}; 60d]$) the concrete edge failure shall be checked per ETAG 001, Annex C, design method A.
- Concrete is considered non-cracked when the tensile stress within the concrete is $\sigma_L + \sigma_R \leq 0$. In the absence of detailed verification $\sigma_R = 3 \text{ N/mm}^2$ can be assumed (σ_L equals the tensile stress within the concrete induced by external loads, anchors loads included).

*Not covered by ETA-11/0080

TPP A2
Inslagplug met gewelfde kraag - Inox A2

Plaatsing



Spacing and edge distance

Referentie	Product Reference	Hole diameter x anchor length [$d_o \times L$] [mm]	Characteristic spacing - Scr,N [scr,N] [mm]	Characteristic edge distance [ccr,N] [mm]
62701x0604000	TPP A2	Ø6x40	100	100
62701x0606000	TPP A2	Ø6x60	100	100

* Not included in the approval

Installation data

Referentie	Product Reference	Hole diameter x anchor length [$d_o \times L$] [mm]	Ø drilling hole [d0] [mm]	Min. drill depth [h1] [mm]	Min. support thickness [hmin] [mm]
62701x0604000	TPP A2	Ø6x40	6	30	100
62701x0606000	TPP A2	Ø6x60	6	30	100

