

TSS

Inslagplug met verzonken kraag

De inslagplug met verzonken kraag TSS is geschikt voor het snel bevestigen van lichte elementen op diverse ondergronden. De nylonplug beperkt warmteoverdracht en de voorgemonteerde nagel zet de plug uit wanneer erop wordt geklopt.

Kenmerken

Materiaal

- Plug : grijs nylon,
- Schroeven : elektrolytisch verzinkt staal.

Voordelen

- Zeer eenvoudige montage en demontage dankzij de nagel met schroefdraad,
- Uitzetting door schroeven of hameren,
- Perfect contact met het materiaal, gelijk met het oppervlak,
- Zigzaggleuf om scheefstand van de nagel te voorkomen.

Toepassingen

Toepassingsgebieden

- Bevestiging van kepers of steunlatten,
- Bevestiging van enkele hoekijzers en ramen en deuren,
- Bevestiging van rails en klemmen voor kabels en leidingen,
- Bevestiging van dunne bekledingen op buiten- en binnengevels.

Ondergrond

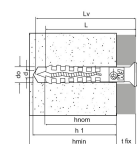
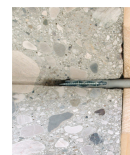
- Ongescheurd beton,
- Hol en vol metselwerk,
- Cellenbeton.



TSS
Inslagplug met verzonken kraag

Technische gegevens

Product Dimensions



Referentie	Product Reference	Hole diameter x anchor length [d _o xL] [mm]	Fixture thickness [t _{fix}] [mm]	Min. hole depth [h ₁] [mm]	Nominal embedment depth [h _{nom}] [mm]	Min. support thickness [h _{min}] [mm]	Screw diameter [d] [mm]	Screw length [L _v] [mm]	Collar diameter [d _c] [mm]	Qty per box	Qty per outer box
62200B0503000	TSS	Ø5x30*	5	35	25	50	3.4	35	8.5	300	3000
62200B0504000		Ø5x40*	15	35	25	50	3.4	45	8.5	200	2000
62200B0604000		Ø6x40	10	40	30	100	3.8	45	10	200	2000
62200B0605000		Ø6x50	20	40	30	100	3.8	55	10	100	1000
62200B0606000		Ø6x60	30	40	30	100	3.8	65	10	100	1000
62200B0608000		Ø6x80	50	40	30	100	3.8	85	10	100	1000
62200B0806000		Ø8x60	20	50	40	100	4.8	65	12	150	1500
62200B0808000		Ø8x80	40	50	40	100	4.8	85	12	150	1500
62200B0810000		Ø8x100	60	50	40	100	4.8	105	12	100	1000
62200B0812000		Ø8x120	80	50	40	100	4.8	125	12	100	1000
62200B0814000		Ø8x140	100	50	40	100	4.8	145	12	100	1000

*Not covered by CE certification

Design capacities - single anchor - no edge distances

Referentie	Design capacities - single anchor - no edge distances				
	Design capacity - Non-cracked concrete (3)				
	Tension - NRd (1)		Shear - VRd (1-2)		Bending moment MRd [Nm]
	C20/25 [kN]	Solid Brick [kN]	C20/25 [kN]	Solid Brick [kN]	
62200B0503000	0.23	0.2	0.6	0.6	-
62200B0504000	0.23	0.2	0.6	0.6	-
62200B0604000	0.6	0.36	0.6	0.6	-
62200B0605000	0.6	0.36	0.6	0.6	-
62200B0606000	0.6	0.36	0.6	0.6	-
62200B0608000	0.6	0.36	0.6	0.6	-
62200B0806000	0.6	0.45	1.2	1.2	-
62200B0808000	0.6	0.45	1.2	1.2	-
62200B0810000	0.6	0.45	1.2	1.2	-
62200B0812000	0.6	0.45	1.2	1.2	-
62200B0814000	0.6	0.45	1.2	1.2	-
62202B0604000	-	-	-	-	-
62204B0604000	-	-	-	-	-

1. The design loads have been calculated using the partial safety factors for resistances stated in ETA-approval(s). The loading figures are valid for unreinforced concrete and reinforced concrete with a rebar spacing $s \geq 15$ cm (any diameter) or with a rebar spacing $s \geq 10$ cm, if the rebar diameter is 10mm or smaller.

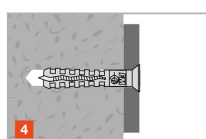
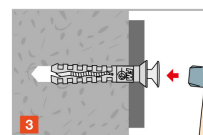
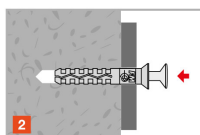
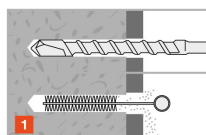
2. The figures for shear are based on a single anchor without influence of concrete edges. For anchorages close to edges ($c \leq \max [10 \text{ hef}; 60d]$) the concrete edge failure shall be checked per ETAG 001, Annex C, design method A.

3. Concrete is considered non-cracked when the tensile stress within the concrete is $\sigma_L + \sigma_R \leq 0$. In the absence of detailed verification $\sigma_R = 3 \text{ N/mm}^2$ can be assumed (σ_L equals the tensile stress within the concrete induced by external loads, anchors loads included).

*Not covered by ETA-11/0080

TSS
Inslagplug met verzonken kraag

Plaatsing



Spacing and edge distance

Referentie	Product Reference	Hole diameter x anchor length [$d_o \times L$] [mm]	Min. edge distance [c_{min}] [mm]	Min. spacing [s_{min}] [mm]
62200B0503000	TSS	$\emptyset 5 \times 30^*$	50	50
62200B0504000	TSS	$\emptyset 5 \times 40^*$	50	50
62200B0604000	TSS	$\emptyset 6 \times 40$	100	100
62200B0605000	TSS	$\emptyset 6 \times 50$	100	100
62200B0606000	TSS	$\emptyset 6 \times 60$	100	100
62200B0608000	TSS	$\emptyset 6 \times 80$	100	100
62200B0806000	TSS	$\emptyset 8 \times 60$	100	100
62200B0808000	TSS	$\emptyset 8 \times 80$	100	100
62200B0810000	TSS	$\emptyset 8 \times 100$	100	100
62200B0812000	TSS	$\emptyset 8 \times 120$	100	100
62200B0814000	TSS	$\emptyset 8 \times 140$	100	100
62202B0604000	TSS	$\emptyset 6 \times 40$	-	-
62204B0604000	TSS	$\emptyset 6 \times 40$	-	-

* Not included in the approval

TSS
Inslagplug met verzonken kraag

Installation data

Referentie	Product Reference	Hole diameter x anchor length [d ₀ xL] [mm]	Ø drilling hole [d0] [mm]	Min. hole depth [h ₁] [mm]	Min. support thickness [h _{min}] [mm]
62200B0503000	TSS	Ø5x30*	5	35	50
62200B0504000	TSS	Ø5x40*	5	35	50
62200B0604000	TSS	Ø6x40	6	40	100
62200B0605000	TSS	Ø6x50	6	40	100
62200B0606000	TSS	Ø6x60	6	40	100
62200B0608000	TSS	Ø6x80	6	40	100
62200B0806000	TSS	Ø8x60	8	50	100
62200B0808000	TSS	Ø8x80	8	50	100
62200B0810000	TSS	Ø8x100	8	50	100
62200B0812000	TSS	Ø8x120	8	50	100
62200B0814000	TSS	Ø8x140	8	50	100
62202B0604000	TSS	Ø6x40	-	50	100
62204B0604000	TSS	Ø6x40	-	50	100

