

EA

## Light Reinforced Angle Bracket

*Light reinforced angle brackets are used to assemble small structural joinery for internal and external applications.*

### Features

#### Material

- Pre-galvanised mild steel.

#### Benefits

- Multiple applications.

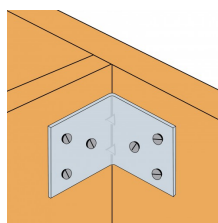
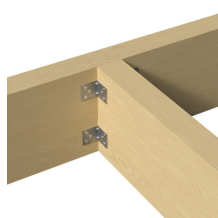
### Applications

#### Header member

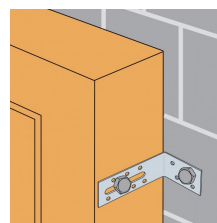
- **Supporting member:** solid wood, composite lumber, glued-laminated wood, triangular trusses, profiles, etc.
- **Supported member:** wood, concrete, steel, etc.

#### For Use With

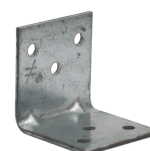
- Interior fittings.
- Furniture.
- Small frames, etc.



Wood to wood connection.



Timber to masonry connection



EA444/2



EA446/2



EA554/2



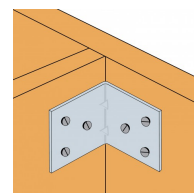
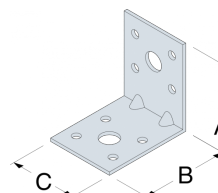
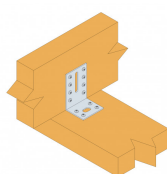
EA664/2



EA756/2

## EA Light Reinforced Angle Bracket

## Technical Data



### Product Dimensions

Wood to wood connection.

References	Product Dimensions [mm]				Weight [kg]
	A	B	C	t	
EA442/2	42	42	20	2	0.02
EA444/2	42	42	40	2	0.04
EA554/2	52	52	40	2	0.06
EA644/2	62	42	40	2	0.06
EA664/2	62	62	40	2	0.07
EA666/2	62	62	60	2	0.1
EA754/2	72	52	40	2	0.07
EA756/2	72	52	60	2	0.1
EA844/2	82	42	40	2	0.07

The EA844/2, EA954/2,5 and EA1064/2,5 do not have ribs in the angle.

EA

## Light Reinforced Angle Bracket

### Installation

#### Fixings

##### Onto wood:

- 3.75 x 30mm square twist nail.
- CNA annular ring-shank nails 4.0 mm.
- CSA screw 5.0 mm.

##### Onto concrete:

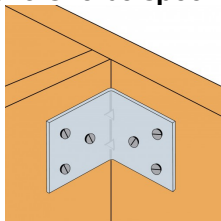
- HIPC 6-40/10 drive anchors or HIPC 8-60/20.
- LMAS resin anchors with AT-HP resin

##### Onto metal:

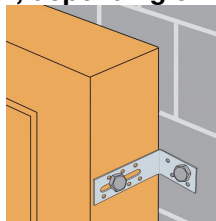
- Bolts.
- HR bolts.
- Tek Screws
- Rivets, etc.

#### Installation

**Fasteners to be specified by the engineer, depending on the application & fixing medium**



*Wood to wood connection.*



*Timber to masonry connection*

EA

**Light Reinforced Angle Bracket**