

Technical data sheet

SIMPSON

Strong-Tie

ANP256660S

ANP-structural angles of stainless steel perforated sheets (2.5 mm)

The thickness of these plates is 3 mm. These angles are suitable for various types of transitions between the wood connection. E.g. Sleeper connection props etc.

DoP:

DE-DoP-E06 / 0106

Features

Material

Steel quality:

- **Stainless Steel 1.4401 bzw. 1.4404 (V4A) in accordance with EN10088 standards.**
- **Class III corrosion resistance**

Benefits

- **Optimal use in many areas. The number of openings allows different combinations of connectivity, load according ET.**

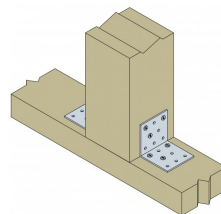
Applications

Applications

- **Wood, wood products**

Scope

- **Wood connector from the stainless steel with the O.A. Material number are suitable for outdoor use, including industrial and marine environment.**
- **The static values of standard products are also valid for the stainless connector.**



ANP256660S

ANP-structural angles of stainless steel perforated sheets
(2.5 mm)

Technical Data

Product Dimensions

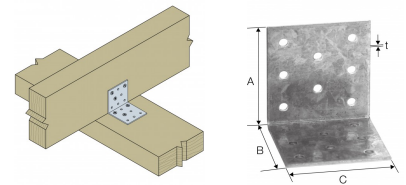


Table "Product Dimensions" cannot be displayed : no references available.

Capacities wood-wood connection - Full Nailing

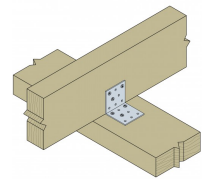


Table "Capacities wood-wood connection - Full Nailing" cannot be displayed : no references available.

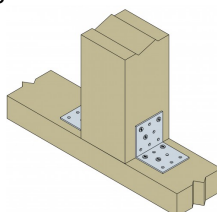
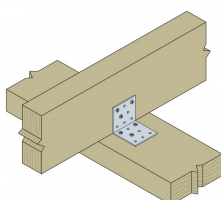
ANP256660S

**ANP-structural angles of stainless steel perforated sheets
(2.5 mm)**

Installation

Fasteners

- Fasten nails or screws CNA4,0xI CSA5,0xI.Pro installation in concrete anchor bolt M12.



ANP256660S

ANP-structural angles of stainless steel perforated sheets (2.5 mm)

