

Technical data sheet

BAN09 Windbracing Strap

SIMPSON
Strong-Tie

BAN09 windbracing straps can be used for anchoring and bracing of roof constructions. The engineered "strong-holes" ensures a very light 0.9 mm strap with the same capacities as a 2mm strap. The thin material makes the strap easy to lift and handle on the job site. And it is easy to cut with metal shears.

Features

Material

Steel:
S550GD + Z275 according to EN10346

Corosion protection:
275 g/m2 on both sides - correspond to a zinc layer of approx. 20 µm

Advantages

- Reinforced holes offer enhanced strap tensile capacity
- Very light weight but strong
- Easy to cut with metal shears



NEW

CE

SC 2

EZ
20 µm

INDOOR

Technical data sheet

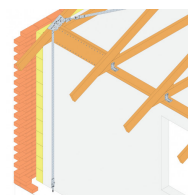
SIMPSON

Strong-Tie

BAN09

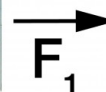
Windbracing Strap

Technical Data



Product Dimensions

| References | Tun / DB nr. | NOB nr. | Product Dimensions | | | Holes | Box Quantity |
|------------|--------------|----------|--------------------|-------|--------|-------|--------------|
| | | | A [mm] | B [m] | t [mm] | Ø | |
| BAN094012 | 1652793 | 47160052 | 40 | 12 | 0.9 | 5 | 1 |
| BAN094025 | 1726428 | 48656595 | 40 | 25 | 0.9 | 5 | 1 |



Product capacities

| References | Characteristic capacities $R_{1,k}$ Timber C24 [kN] | | | | |
|------------|---|-----------|-----------|-----------|-----------|
| | Maximum value | CNA4.0x35 | CNA4.0x40 | CNA4.0x50 | CNA4.0x60 |
| BAN094012 | 17.8 | 1.68 x n | 1.83 x n | 2.22 x n | 2.36 x n |
| BAN094025 | 17.8 | 1.68 x n | 1.83 x n | 2.22 x n | 2.36 x n |

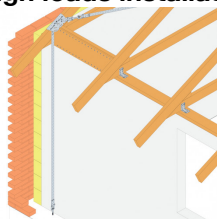
n = effective number of nails in the row according to Eurocode 5 – 8.3.1.1 (8)

BAN09

Windbracing Strap

Installation

Fixation

CNA4.0xI**CSA5.0xI****For high loads installation with windbracing connectors is recommended**

BAN09

Windbracing Strap