

## Technical data sheet

**SIMPSON**

**Strong-Tie**

AB55365S

**AB55365S - stainless steel bracket**

Suitable for joining wood to wood or wood-concrete joints, for uniform load is recommended to use two brackets on each link

### Features

#### Material

- **Stainless steel 1.4401 or 1.4404 (V4A), in accordance with EN10088.**
- **Resistance to acid - A4**

#### Benefits

- **Connection through a variety of screws, nails and mechanical anchors.**

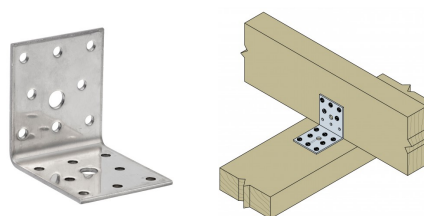
### Applications

#### Applicatons

**Suitable for connections wood-wood, concrete, steel**

#### Scope

- **For timber-to-timber connections with smaller dimensions, installation of windows, sills installation.**



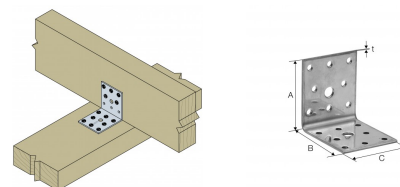
## Technical data sheet

**SIMPSON****Strong-Tie**<sup>®</sup>

AB55365S

**AB55365S - stainless steel bracket**

## Technical Data



### Product Dimensions

References	Tun / DB nr.	NOB nr.	Product Dimensions [mm]				Joist		Holes flange B		Box Quantity	Weight [kg]
			A	B	C	t	Ø5 [mm]	Ø8,5 [mm]	Ø5 [mm]	Ø8,5 [mm]		
AB55365S-B	1454180	43893844	65	65	55	2.5	8	1	8	1	100	0.13

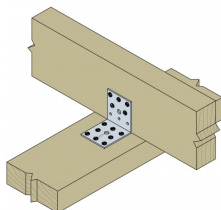
AB55365S

**AB55365S - stainless steel bracket**

## Installation

### Fasteners

- connections using screws or nails CSA5,0xI CNA4,0xI
- For installation in concrete use anchor bolts M8



AB55365S

**AB55365S - stainless steel bracket**