

Technical data sheet

SIMPSON

Strong-Tie

ECA

Light Duty Flat I Bracket

Light angle brackets are used in a large number of DIY applications and are commonly used for reinforcing furniture assemblies.

Features

Material

- Steel S235JR according to NF EN 10025, electro-galvanized finish.

Benefits

- large range for large application range
- Suitable on timber and concrete

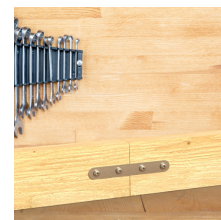
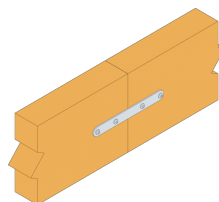
Applications

Suitable On

- **Supporting member:** wood, etc.

Scope

- Solid wood.
- Panels.
- PVC, etc.



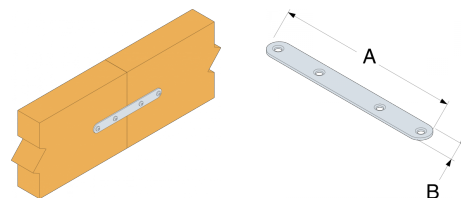
Technical data sheet

SIMPSON**Strong-Tie**[®]

ECA

Light Duty Flat I Bracket

Technical Data



Product Dimensions

| References | Product Dimensions [mm] | | | Joist | | | | | Weight [kg] |
|------------|-------------------------|----|---|-------|------|------|------|------|-------------|
| | A | B | t | Ø4.5 | Ø4.6 | Ø4.8 | Ø5.2 | Ø5.4 | |
| ECA55/2 | 55 | 15 | 2 | - | 4 | - | - | - | 0.01 |
| ECA75/2 | 75 | 15 | 2 | - | - | - | 4 | - | 0.016 |
| ECA95/2 | 95 | 15 | 2 | - | - | 4 | - | - | 0.021 |
| ECA115/2 | 115 | 15 | 2 | 4 | - | - | - | - | 0.026 |
| ECA135/2 | 135 | 18 | 2 | - | - | - | - | 4 | 0.035 |
| ECA155/2 | 155 | 18 | 2 | - | - | - | 4 | - | 0.038 |

ECA

Light Duty Flat I Bracket

Installation

Fasteners

Countersunk holes:

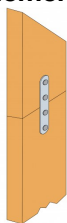
- Type 30 to 80 dia. 4.2 mm.
- Type 90 to 140 dia. 5.5 mm.

On wood:

- CNA annular ring-shank nails dia. 3.1 x 35 mm and dia. 4.0 x 35 mm.
- SD8 screws dia. 4.0 x 32 mm.

Installation

- 1. Place the elements together**
- 2. Mark out positions if required**
- 3. Fix the elements with nail or screws**



Panels assembly

ECA

Light Duty Flat I Bracket