

## Technical data sheet

**SIMPSON**

**Strong-Tie**

PPA

### Elevated Post Base with 100mm Stand Off

*The PPA is for post base installations requiring a higher standoff distance.*

## Features

### Material

- Steel S235JR according to NF EN 10025
- Hotdip galvanized according to NF EN ISO 1461

### Benefits

- No machining necessary

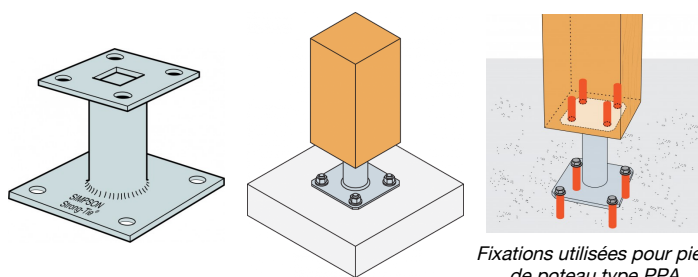
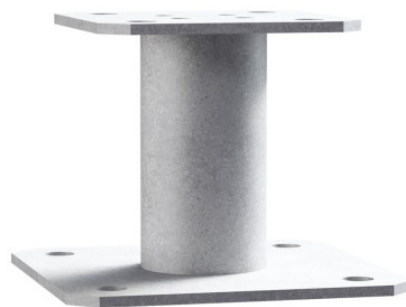
## Applications

### Header member

- **Supporting member:** solid wood, glued-laminated wood, concrete
- **Supported member:** solid wood, composite lumber, glued-laminated wood

### Applications

- Awning posts
- Pergola
- Veranda
- Porch-ways
- Car-ports

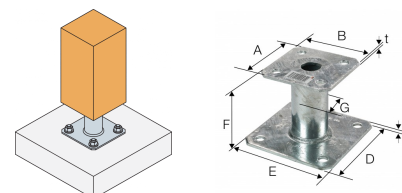


Fixations utilisées pour pied de poteau type PPA

## PPA Elevated Post Base with 100mm Stand Off

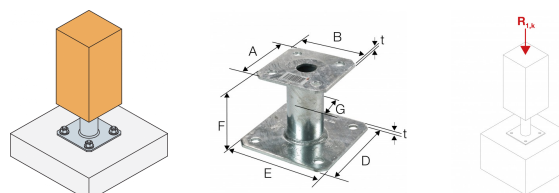
### Technical Data

#### Product Dimensions



| References | Product Dimensions [mm] |     |     |     |     |      |   | Top plate holes | Bottom plate holes | Weight [kg] |
|------------|-------------------------|-----|-----|-----|-----|------|---|-----------------|--------------------|-------------|
|            | A                       | B   | D   | E   | F   | G    | t | Ø12             | Ø12                |             |
| PPA100     | 100                     | 100 | 130 | 130 | 100 | 48.3 | 4 | 4               | 4                  | 1.1         |
| PPA150     | 100                     | 100 | 130 | 130 | 150 | 48.3 | 4 | 4               | 4                  | 1.3         |

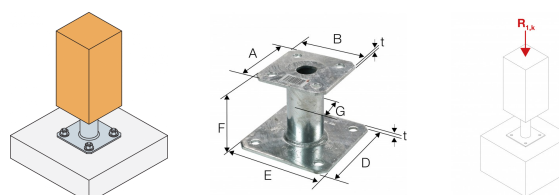
#### Product characteristic capacities



| References | Product capacities - Timber to Concrete |        |             |      |   |
|------------|---|--------|-------------|------|---|
|            | Number of Fasteners                     |        |             |      | Characteristic capacities - Timber C24 [kN] |
|            | On post                                 |        | On concrete |      |   |
|            | Qty                                     | Type   | Qty         | Type |   |
| PPA100     | 4                                       | Ø10x80 | 4           | Ø10* | R <sub>1,k</sub><br>78.5 / kmod^0.4         |
| PPA150     | 4                                       | Ø10x80 | 4           | Ø10* | 78.5 / kmod^0.4                             |

\* Refer to the Simpson Strong-Tie anchor product range for suitable anchors. Typical anchor solutions are WA, BOAXII, AT-HP, SET-XP, depending on the concrete type, spacing and edge distances.

#### Product simplified characteristic capacities



| References | Simplified product capacities - Timber to Concrete |        |             |       |  |
|------------|--|--------|-------------|-------|--|
|            | Number of Fasteners                                |        |             |       | Simplified characteristic capacities - Timber C24 [kN] |
|            | On post  |        | On concrete |       |  |
|            | Qty  | Type   | Qty         | Type  |  |
| PPA100     | 4  | Ø10x80 | 4           | Ø10** | R <sub>1,k</sub> *                                     |
| PPA150     | 4  | Ø10x80 | 4           | Ø10** | R <sub>1,k</sub> *                                     |

\*The published characteristic capacity is based on medium term load duration and service class 3 according to EC5 (EN 1995)( $k_{mod} = 0.7$ ). For other load duration and service class, please refer to the ETA to get more accurate capacities.

\*\* Refer to the Simpson Strong-Tie anchor product range for suitable anchors. Typical anchor solutions are SET-XP and AT-HP, depending on the concrete type, spacing and edge distances.

PPA

**Elevated Post Base with 100mm Stand Off**

## Installation

### Fixings

#### On post:

- LAG screws - SSH10.0 x 80 mm

#### On concrete:

- *Mechanical anchor:* M10 x FM-753 - Length to be confirmed by Engineer
- *Chemical anchor:* AT-HP resin + LMAS M10 Rod - Length to be confirmed by Engineer

### Installation

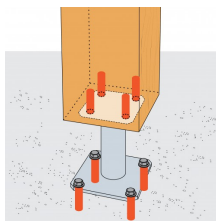
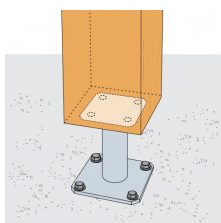
**Fix to the foundation with concrete screw/mechanical anchor or resin anchor system. Fix to the post using M10 coach screws.**

- **Not recommended when the top of post/column is not restrained (e.g. fence post)**

**ATTENTION: Tested with post with maximum cross-section 200 x 200 mm.**

**The bases are always installed in the same direction:**

- Plate 130 x 130 mm on the ground.
- Plate 100 x 100 mm fastened on the post.



Fixations utilisées pour pied de poteau type PPA

PPA

**Elevated Post Base with 100mm Stand Off**