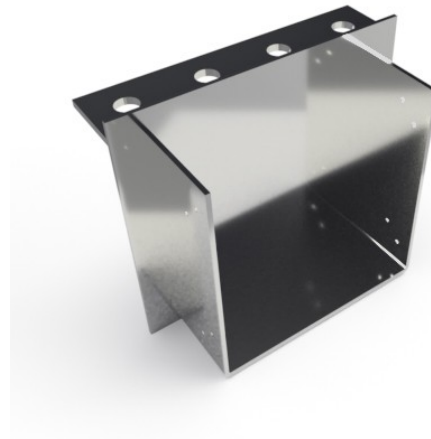


## VHJHM Very Heavy Masonry Hanger

*The VHJHM is a heavy duty masonry hanger intended for supporting timber joists, beams and trussed rafters from a padstone in a masonry wall.*



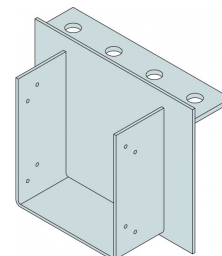
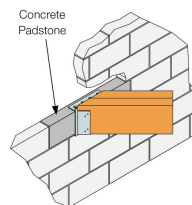
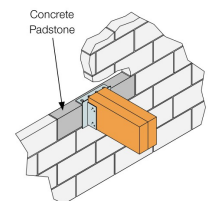
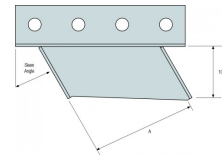
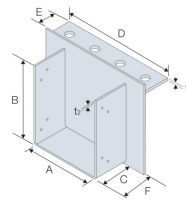
### Features

#### Material

- HDG mild steel

#### Benefits

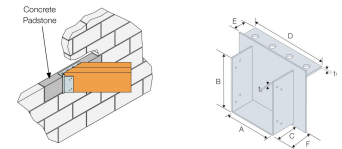
- The top flange provides the widest area of contact with the concrete padstone support
- Superior performance
- Skewed options available - up to 67.5° left or right



VHJHM  
Very Heavy Masonry Hanger

## Technical Data

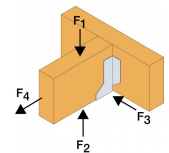
### Product Dimensions



References	Joist Size [mm]		Product Dimensions [mm]							Joist holes
	Width	Height	A	B	C	D	E	t <sub>1</sub>	t <sub>2</sub>	Ø6 [mm]
VHJHM	38-300	100-450	40-300	100-450	100	330	75	8	5	8
SPEC E VHJHM	38-300	100-450	40-300	100-450	100	330	75	8	5	8

Top flange thickness is 8mm

### Product Capacities - Timber to Concrete - Full nailing



References	Performance Values		Characteristic Capacity [kN]	Safe Working Loads [kN]
	Number of Fasteners		R <sub>1,k</sub>	R <sub>1,SWL,Long term</sub>
	Qty	Joist	N3.75x30	N3.75x30
VHJHM	8	N3.75x30	101	58
SPEC E VHJHM	8	N3.75x30	101	58

1. Hanger is to be installed on a Concrete Padstone, minimum strength C30.
2. A MINIMUM OF 3 COURSES OF SOLID BLOCK (675MM MASONRY) IS REQUIRED ABOVE THE HANGER TOP FLANGE, WITH MORTAR FULLY CURED, BEFORE APPLYING LOAD.
3. Skewed options available: Can be skewed up to 67.5° Left or Right

VHJHM

**Very Heavy Masonry Hanger**

## Installation

### Installation

- The hanger top flange should be positioned centrally along the length of the concrete padstone. The padstone should be a minimum of 600mm long.
- Set the hanger back flange tight against the block wall when built to desired level, then continue with additional courses to complete wall height. Joist should be tight into the back of the hanger. Maximum gap permitted is 6mm.
- Use all specified fasteners.
- A minimum 3 courses of solid block work (675mm masonry) is required above the hanger top flange, with mortar fully cured before applying load.
- Do not stack blocks or heavy loads on the joists during construction unless the joists have additional support to take the full load of the blocks vertically and horizontally.

