

Technical data sheet

SIMPSON

Strong-Tie

LS

Skewable Angle

Designed to attach timber members at irregular angles, these connectors can be bent on site from 0° to 135°. The staggered nail pattern reduces the possibility for splitting the timber and allows installation on both sides of the member. LS can also be used to steel to steel.

Features

Material

- Pre-galvanised mild steel.

Benefits

- Site skewable.

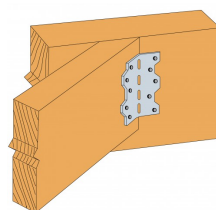
Applications

Header member

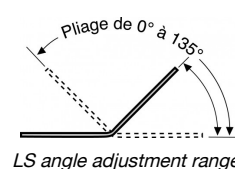
- **Timber to timber.**
- **Steel to steel**

For Use With

- Timber and Steel construction.



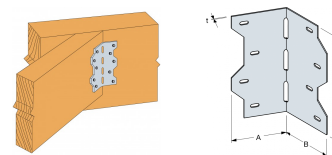
LS



LS Skewable Angle

Technical Data

Product Dimensions



LS

References	Product Dimensions [mm]				Jolst	Holes Flange B
	A	B	C	t	Ø4x7 Obround	Ø4x7 Obround
LS30	57	57	86	1.2	3	3
LS50	57	57	124	1.2	4	4
LS70	57	57	162	1.2	5	5

Performance Values

References	Fasteners		Safe Working Loads [kN]		Characteristic Capacity [kN]
	Flange A	Flange B	$R_1 = R_{2,SWL, Long Term}$	$R_1 = R_{2,SWL, Medium Term}$	$R_{1,k} = R_{2,k}$
			N3.75x75	N3.75x75	N3.75x75
LS30	3	3	1.3	1.6	2.8
LS50	4	4	1.7	2.2	4.3
LS70	5	5	2.2	2.6	4.4

LS Skewable Angle

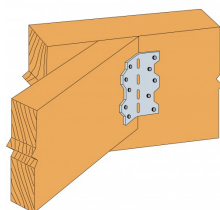
Installation

Fixing

- Timber: CNA Ø 3.7x50 mm.
- Steel: Ø 4.8 mm screws.

Installation

Adjust on site from 0 though to 135 degrees.



LS

