

Technical data sheet

SIMPSON

Strong-Tie

ETFSS

Timber Frame Hold Down Strap

ETFSS hold down strap provides restraint against uplift to timber frame structures keeping them firmly to the ground.

- Quick and simple to install
- One size strap suits cavities from 50 to 100mm
- Meets NHBC Technical requirements
- Meets NSAI Technical requirements

Features

Material

- Stainless steel

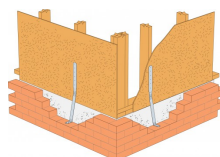
Applications

Installation

Use all specified fasteners. Verify that the header can take the required fasteners specified in the table.

Note: Use 3.35x50mm stainless steel annular ring shank nails.

CE



ETFSS

Timber Frame Hold Down Strap

Technical Data



Product Dimensions

| References | Product Dimensions [mm] | | | | | | | |
|------------|-------------------------|-----|----|-----|-----|----------|----------|------------|
| | A | B | C | D | t | Holes | | |
| | | | | | | Flange A | Flange B | |
| | | | | | | Ø4x6 Pan | Ø4.1 | Triangular |
| ETFSS | 75 | 723 | 33 | 380 | 1.2 | 2 | 6 | 2 |
| ETFSS06 | 75 | 533 | 33 | 380 | 1.2 | 2 | 4 | - |

Performance Values

| References | Fastener Qty | Characteristic Load [kN] | Safe Working Load [kN] |
|---------------------------|--------------|--------------------------|------------------------|
| | | NSS3.35x50 | NSS3.35x50 |
| ETFSS (50mm Cavity) | 6 | 6.3 | 3 |
| ETFSS (51-100mm Cavity) | 8 | 2.1 | 1.5 |
| ETFSS06 (50mm Cavity) | 4 | 5.4 | 2.7 |
| ETFSS06 (51-100mm Cavity) | 4 | 2.9 | 1.4 |

