

Technical data sheet

SIMPSON

Strong-Tie

ECA

Light Duty Flat I Bracket

Light angle brackets are used in a large number of DIY applications and are commonly used for reinforcing furniture assemblies.

Features

Material

- Steel S235JR according to NF EN 10025, electro-galvanized finish.

Benefits

- large range for large application range
- Suitable on timber and concrete

Applications

Suitable On

- **Supporting member:** wood, etc.

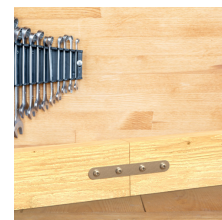
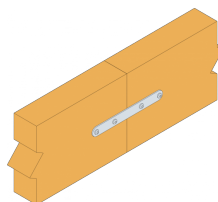
Scope

- Solid wood.
- Panels.
- PVC, etc.



EZ

INDOOR



Technical data sheet

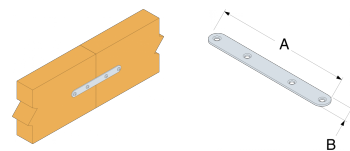
SIMPSON**Strong-Tie®**

ECA

Light Duty Flat I Bracket

Technical Data

Product Dimensions



References	Product Dimensions [mm]			Joist				
	A	B	t	Ø4.5	Ø4.6	Ø4.8	Ø5.2	Ø5.4
ECA55/2	55	15	2	-	4	-	-	-
ECA75/2	75	15	2	-	-	-	4	-
ECA95/2	95	15	2	-	-	4	-	-
ECA115/2	115	15	2	4	-	-	-	-
ECA135/2	135	18	2	-	-	-	-	4

ECA

Light Duty Flat I Bracket

Installation

Fasteners

Countersunk holes:

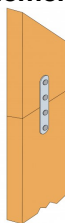
- Type 30 to 80 dia. 4.2 mm.
- Type 90 to 140 dia. 5.5 mm.

On wood:

- CNA annular ring-shank nails dia. 3.1 x 35 mm and dia. 4.0 x 35 mm.
- SD8 screws dia. 4.0 x 32 mm.

Installation

- 1. Place the elements together**
- 2. Mark out positions if required**
- 3. Fix the elements with nail or screws**



Panels assembly

