

QDPRO51E Quik Drive Tool for Drywall Applications

The QDPRO51E is a Quik Drive attachment suitable for screws ranging from 25mm to 51mm in length. Predominantly used for drywall applications due to the smooth nose piece which prevents marking of the work surface. Quik Drive attachments are manufactured containing PTFE to reduce friction and impart non-stick properties meaning that no lubrication is required. Available with or without extension pole.



Features

Material

- Manufactured containing PTFE
- No lubrication required

Benefits

- Connects easily with screw gun adapter or extension
- Possible 360° rotation of attachment on adapter or extension
- Self-lubricating material for long life and smooth operation
- Self-locking depth adjustment for consistent countersinking of screws
- Available as attachment only or with extension pole

Available Kits

QDPRO51E: Includes Quik Drive attachment, mandrel, driver bits, quiver and small carry case
QDPRO51KE: Includes Quik Drive attachment, mandrel, driver bits, quiver, large carry case and extension pole

Applications

Applications

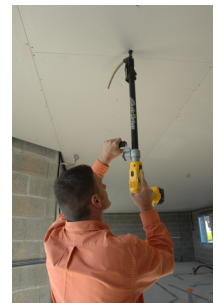
- Drywall
- Finish flooring
- Light gauge steel



Nez lisse permettant de ne pas endommager la surface de la plaque de plâtre.



Molette de réglage de la pénétration de la tête de la vis dans le support.



Vissage sur plafond en plaque de plâtre.

QDPRO51E

Quik Drive Tool for Drywall Applications

Technical Data

Areas of use

QDPRO51E

QDPRO51KE

