

Technical data sheet

**FRUL
SIDER**

SIMPSON
StrongTie

TSS A2

Countersunk Preassembled Nylon Plug with Stainless Steel A2 Screw

The TSS A2 nylon plug in Ø6 and Ø8 mm versions are approved for fastening in concrete. When the A2 nail screw is driven into the anchor plug, it is expanded and securely anchored in the building material.

Features

Material

- Plug: grey nylon
- Screw: stainless steel A2

Benefits

- Countersunk rim for roofing professionals
- Innovative geometry

Applications

Applications

- Wooden battens
- Electrical components
- Skirting boards

Suitable for

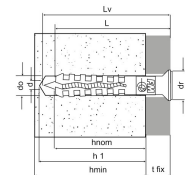
- Non-cracked concrete
- Solid brick
- Honeycomb brick (partially suitable)
- Cell like clay brick (partially suitable)
- Lightweight honeycomb brick (partially suitable)
- Hollow dense aggregate block (partially suitable)
- Hollow light aggregate block (partially suitable)
- Aerated concrete (partially suitable)
- Solid stone



TSS A2

Countersunk Preassembled Nylon Plug with Stainless Steel A2 Screw

Technical Data



Product Dimensions

References	Product Reference	Hole diameter x anchor length [d _o xL] [mm]	Fixture thickness [t _{fx}] [mm]	Min. hole depth [h ₁] [mm]	Nominal embedment depth [h _{nom}] [mm]	Min. support thickness [h _{min}] [mm]	Screw diameter [d] [mm]	Screw length [L _v] [mm]	Collar diameter [d _c] [mm]	Qty per box	Qty per outer box
62203x0503000	TSS A2	Ø5x30 ▲ *	5	35	25	50	3.4	35	8.5	300	3000
62203x0504000		Ø5x40 ▲ *	15	35	25	50	3.4	45	8.5	200	2000
62203x0505000		Ø5x50 ▲ *	25	35	25	50	3.4	55	8.5	200	2000
62203x0604000		Ø6x40	10	40	30	100	3.8	45	10	200	1600
62203x0605000		Ø6x50	20	40	30	100	3.8	55	10	100	1000
62203x0606000		Ø6x60	30	40	30	100	3.8	65	10	100	800
62203x0608000		Ø6x80	50	40	30	100	3.8	85	10	100	800

* Not covered by CE certification

▲ Quantity and delivery terms to be agreed

Design capacities - single anchor - no edge distances

References	Design capacities - single anchor - no edge distances				
	Design capacity - Non-cracked concrete (3)				
	Tension - NRd (1)		Shear - VRd (1-2)		Bending moment MRd [Nm]
	C20/25 [kN]	Solid brick [kN]	C20/25 [kN]	Solid brick [kN]	
62203x0503000	0.23	0.2	0.6	0.6	-
62203x0504000	0.23	0.2	0.6	0.6	-
62203x0505000	0.23	0.2	0.6	0.6	-
62203x0604000	0.6	0.36	0.6	0.6	-
62203x0605000	0.6	0.36	0.6	0.6	-
62203x0606000	0.6	0.36	0.6	0.6	-
62203x0608000	0.6	0.36	0.6	0.6	-

1. The design loads have been calculated using the partial safety factors for resistances stated in ETA-approval(s). The loading figures are valid for unreinforced concrete and reinforced concrete with a rebar spacing $s \geq 15$ cm (any diameter) or with a rebar spacing $s \geq 10$ cm, if the rebar diameter is 10mm or smaller.
 2. The figures for shear are based on a single anchor without influence of concrete edges. For anchorages close to edges ($c \leq \max [10 \text{ hef}; 60d]$) the concrete edge failure shall be checked per ETAG 001, Annex C, design method A.

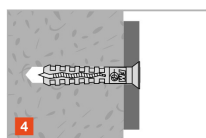
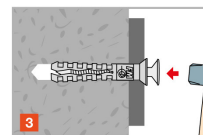
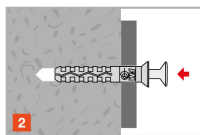
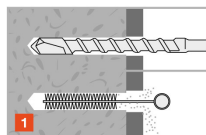
3. Concrete is considered non-cracked when the tensile stress within the concrete is $\sigma_L + \sigma_R \leq 0$. In the absence of detailed verification $\sigma_R = 3 \text{ N/mm}^2$ can be assumed (σ_L equals the tensile stress within the concrete induced by external loads, anchors loads included).

*Not covered by ETA-11/0080

TSS A2

Countersunk Preassembled Nylon Plug with Stainless Steel A2 Screw

Installation



Spacing and edge distance

References	Product Reference	Hole diameter x anchor length [d _o xL] [mm]	Min. edge distance [c _{min}] [mm]	Min. spacing [s _{min}] [mm]
62203x0503000	TSS A2	Ø5x30 ▲ *	50	50
62203x0504000	TSS A2	Ø5x40 ▲ *	50	50
62203x0505000	TSS A2	Ø5x50 ▲ *	50	50
62203x0604000	TSS A2	Ø6x40	100	100
62203x0605000	TSS A2	Ø6x50	100	100
62203x0606000	TSS A2	Ø6x60	100	100
62203x0608000	TSS A2	Ø6x80	100	100

* Not included in the approval

Installation data

References	Product Reference	Hole diameter x anchor length [d _o xL] [mm]	Ø drilling hole [d0] [mm]	Min. hole depth [h ₁] [mm]	Min. support thickness [h _{min}] [mm]
62203x0503000	TSS A2	Ø5x30 ▲ *	5	35	50
62203x0504000	TSS A2	Ø5x40 ▲ *	5	35	50
62203x0505000	TSS A2	Ø5x50 ▲ *	5	35	50
62203x0604000	TSS A2	Ø6x40	6	40	100
62203x0605000	TSS A2	Ø6x50	6	40	100
62203x0606000	TSS A2	Ø6x60	6	40	100
62203x0608000	TSS A2	Ø6x80	6	40	100

Winchester Road Cardinal Point
 Tamworth Staffordshire B78 3HG
 tel: +44 1827 255600
 fax: +44 1827 255616

Copyright by Simpson Strong-Tie®

Information presented on this document is the exclusive property of Simpson Strong-Tie®
 It is valid only when associated with products supplied by Simpson Strong-Tie®

TSS A2

**Countersunk Preassembled Nylon Plug
 with Stainless Steel A2 Screw**



www.strongtie.co.uk