

SPWT Stepped Party Wall Tie

The SPWT has been specifically designed and engineered to connect separating walls of attached timber framed buildings. The SPWT is to be used for applications where the timber frame separating walls are stepped, typically in terraced or semi-detached housing, built on sloped elevations.

Features

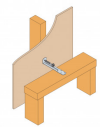
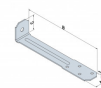
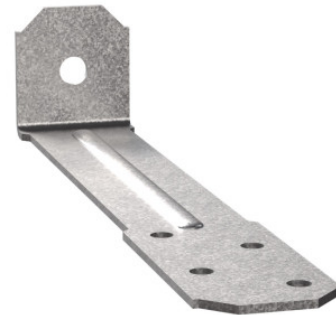
Material

Pre-galvanised Mild Steel - Z275

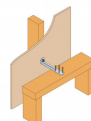
Features

The SPWT design ensures minimum material section for optimum sound performance.

- Meets the requirements of Part E of The Building Regulations (Resistance to the Passage of Sound)
- Compliant with Building Standards Scotland - Section 5 (Noise)
- Compliant with E-WT-1 & E-WT-2 (Robust Details) for separating wall straps
- Suits timber frame separating wall with cavities from 50 to 75mm
- Supplied with SSH screw for fixing into the timber frames vertical stud



SSH6.0x60 Installed into vertical stud of timber frame



3.75x30mm square twist nails installed into the top of the top rail of the timber frame wall



Complete Installation.

SPWT
Stepped Party Wall Tie

Technical Data

Dimensions



References	Product Dimensions					
	Dimension [mm]				Holes	
	A	B	C	t	Flange A	Flange C
					Ø4.1	Ø6.2
SPWT	25	140	25	1.5	4	1

Performance Values



Complete Installation.

References	Fasteners				Performance Values	
	Flange A		Flange C		Characteristic Load [kN]	Safe Working Loads [kN]
	Qty	Type	Qty	Type	$R_{5,k} = R_{6,k}$	$R_{5,SWL,LT} = R_{6,SWL,LT}$
SPWT	4	N3.75x30	1	SSH6.0x60	2.6	1.8

Notes:

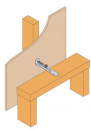
1. R_5 and R_6 loads are tension and compression loads through the length of the tie
2. Performance values are based upon tests, with the SSH fixed through 9mm OSB into a 38mm wide face of the timber stud.

SPWT Stepped Party Wall Tie

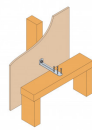
Installation

Installation

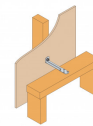
- Fix the SPWT to the face of the vertical stud with 1 No SSH6.0x60 screw (supplied). Note, the SPWT can be screwed directly to the narrow face of the stud (minimum 38mm wide) or through the wall sheathing (minimum 9mm OSB) into the stud.
- The SPWT is then fixed to the top of the adjacent timber frame panels top rail with 4 No 3.75x30mm square twist nails (NOT supplied), ensuring a minimum 20mm nail edge distance.
- Ties are typically installed at 1200mm centres horizontally, one row of ties per storey height.



SSH6.0x60 Installed into vertical stud of timber frame



3.75x30mm square twist nails installed into the top of the top rail of the timber frame wall



Complete Installation.



N3.75x30mm Sheradised Square Twist Nail



SSH Screw

