

## Technical data sheet

**SIMPSON**

**Strong-Tie**

SCW

### Head of Wall Movement Clip Connector

*SCW movement-clip connectors are primarily used in head-of-wall applications that require vertical movement relative to the structure. The connector can also be used to strengthen window and door jambs for projects which utilise slip-track.*

## Features

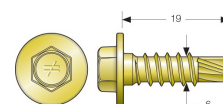
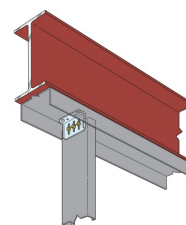
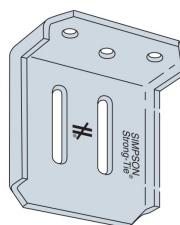
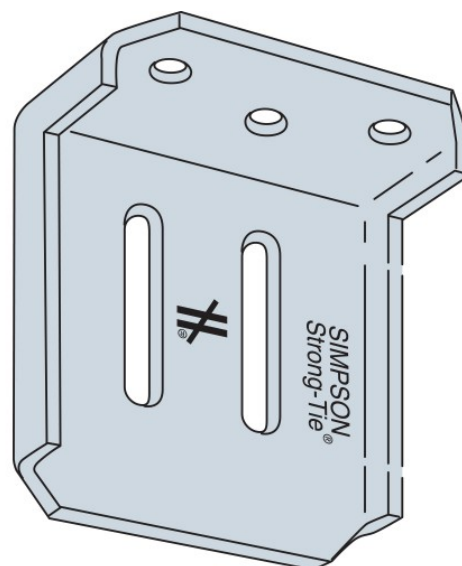
### Benefits

- Provides a full 25mm of both upward and downward movement.
- Manufactured from 1.4mm pre-galvanised steel.
- Supplied with Ø6 shouldered screws (XSH34B1414-83).

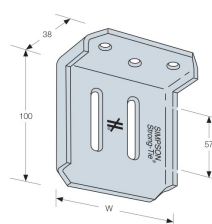
## Applications

### Suitable For

- Light Gauge Steel Construction



XSH34B1414-83  
Shouldered Screw  
(included)



SCW

Head of Wall Movement Clip Connector

## Technical Data

### Characteristic Loads

References	Dimensions and drill holes [mm]		Fasteners qty	Characteristic Capacities [kN]	
	W	Thickness		0.9 mm Stud	1.4 mm Studs
				R <sub>4,k</sub>	R <sub>4,k</sub>
SCW3.25-KT	83	1.4	2 - ø6	3.2	5.4
SCW5.5-KT	140	1.4	3 - ø6	3.2	8.7

1. Tested in accordance with ICC ES-261.

2. Loads are based on clips installed with (4) Ø6 screws in the anchor leg. For other anchorage installations, the capacity of the connection will be the minimum of the tabulated value and the anchorage loads in the table.

References	Anchorage Type	Qty	Anchor Load F <sub>4</sub> (kN)
SCW3.25-KT	ø6 Self Drilling Screws (XSH34B1414-83)	2 - ø6	4.6
		3 - ø6	5.4
SCW5.5-KT		2 - ø6	8.5
		3 - ø6	8.7

