

FM 753 evo

Pasador de anclaje opción 7

Los pasadores de anclaje FM 753 son fijaciones por expansión sobre soporte de hormigón.

Características

Materia

- Acero electrocincado.

Ventajas

- Distancia al borde y entre centros mínima
- Instalación rápida y sencilla: tuerca y arandela premontadas y profundidad de anclaje reducida;
- \varnothing de rosca = \varnothing de perforación
- Protección de la rosca durante el montaje: punto de impacto reforzado
- Marcado en la cabeza: identificación de las dimensiones del pasador tras la instalación

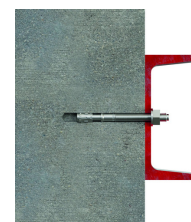
Aplicaciones

Applications

- Railings
- Metal and wood carpentry
- Facades

Support

- Hormigón no fisurado
- Piedra natural densa



Fixation de structure bois



Zoom de la punta



Fixation de structure métallique

FM 753 evo

Pasador de anclaje opción 7

Datos técnicos

Dimensions

| Modelo | Dimensions [ØxL] | ID ¹⁾ | Ep. max de la pièce à fixer [t _{fix}] | Ø perçage [d _o] | Profondeur mini perçage [h ₁] | Profondeur d'ancrage [h _{ef}] | Ø max perçage pièce à fixer [d _f] | Ep. mini du support [h _{min}] | Couple de serrage [T _{inst}] | Ouverture de clé sur plat [SW] | Qté par boîte | Qté par surconditionnement |
|---------------|-------------------------|------------------|---|-----------------------------|---|---|---|---|--|--------------------------------|---------------|----------------------------|
| 75340B0604800 | M6x48 ^{*/**} | A | 3 | 6 | 45 | 30 | 7 | 90 | 8 | 10 | 150 | 1500 |
| 75340B0606500 | M6x65 | B | 10 | 6 | 55 | 40 | | 100 | 8 | 10 | 100 | 1000 |
| 75340B0608500 | M6x85 | C | 30 | 6 | 55 | 40 | | 100 | 8 | 10 | 100 | 1000 |
| 75340B0806800 | M8x68 | B | 5 | 8 | 65 | 45 | 9 | 100 | 15 | 13 | 100 | 400 |
| 75340B0807300 | M8x73 | C | 10 | 8 | 65 | 45 | | 100 | 15 | 13 | 100 | 400 |
| 75340B0808300 | M8x83 | D | 20 | 8 | 65 | 45 | | 100 | 15 | 13 | 100 | 400 |
| 75340B0809300 | M8x93 | E | 30 | 8 | 65 | 45 | | 100 | 15 | 13 | 100 | 400 |
| 75340B0810300 | M8x103 | F | 40 | 8 | 65 | 45 | | 100 | 15 | 13 | 100 | 400 |
| 75340B0811300 | M8x113 | G | 50 | 8 | 65 | 45 | | 100 | 15 | 13 | 100 | 400 |
| 75340B0813300 | M8x133 | H | 70 | 8 | 65 | 45 | | 100 | 15 | 13 | 100 | 400 |
| 75340B0816300 | M8x163 | I | 100 | 8 | 65 | 45 | 100 | 15 | 13 | 50 | 200 | |
| 75340B1007800 | M10x78 | B | 5 | 10 | 70 | 50 | 12 | 100 | 30 | 17 | 50 | 200 |
| 75340B1008300 | M10x83 | C | 10 | 10 | 70 | 50 | | 100 | 30 | 17 | 50 | 200 |
| 75340B1009300 | M10x93 | D | 20 | 10 | 70 | 50 | | 100 | 30 | 17 | 50 | 200 |
| 75340B1010300 | M10x103 | E | 30 | 10 | 70 | 50 | | 100 | 30 | 17 | 50 | 200 |
| 75340B1011300 | M10x113 | F | 40 | 10 | 70 | 50 | | 100 | 30 | 17 | 50 | 200 |
| 75340B1012300 | M10x123 | G | 50 | 10 | 70 | 50 | | 100 | 30 | 17 | 50 | 200 |
| 75340B1014300 | M10x143 | H | 70 | 10 | 70 | 50 | | 100 | 30 | 17 | 50 | 200 |
| 75340B1017300 | M10x173 | I | 100 | 10 | 70 | 50 | | 100 | 30 | 17 | 25 | 100 |
| 75340B1021300 | M10x213 | L | 140 | 10 | 70 | 50 | | 100 | 30 | 17 | 25 | 100 |
| 75340B1210400 | M12x104 | B | 5 | 12 | 90 | 65 | 14 | 130 | 50 | 19 | 50 | 200 |
| 75340B1210900 | M12x109 | C | 10 | 12 | 90 | 65 | | 130 | 50 | 19 | 50 | 200 |
| 75340B1211900 | M12x119 | D | 20 | 12 | 90 | 65 | | 130 | 50 | 19 | 50 | 200 |
| 75340B1212900 | M12x129 | E | 30 | 12 | 90 | 65 | | 130 | 50 | 19 | 25 | 100 |
| 75340B1213900 | M12x139 | F | 40 | 12 | 90 | 65 | | 130 | 50 | 19 | 25 | 100 |
| 75340B1214900 | M12x149 | G | 50 | 12 | 90 | 65 | | 130 | 50 | 19 | 25 | 100 |
| 75340B1217900 | M12x179 | H | 80 | 12 | 90 | 65 | | 130 | 50 | 19 | 25 | 100 |
| 75340B1219900 | M12x199 | I | 100 | 12 | 90 | 65 | | 130 | 50 | 19 | 25 | 100 |
| 75340B1221900 | M12x219 | L | 120 | 12 | 90 | 65 | | 130 | 50 | 19 | 20 | 80 |
| 75340B1223900 | M12x239 | M | 140 | 12 | 90 | 65 | | 130 | 50 | 19 | 20 | 80 |
| 75340B1225900 | M12x259 | N | 160 | 12 | 90 | 65 | 130 | 50 | 19 | 20 | 80 | |
| 75340B1611000 | M16x110 ^{*/**} | A | 15 | 16 | 89 | 59 | 18 | 140 | 100 | 24 | 20 | 80 |
| 75340B1615100 | M16x151 | C | 30 | 16 | 110 | 80 | | 160 | 100 | 24 | 20 | 80 |
| 75340B1617100 | M16x171 | D | 50 | 16 | 110 | 80 | | 160 | 100 | 24 | 15 | 60 |
| 75340B1620100 | M16x201 | E | 80 | 16 | 110 | 80 | | 160 | 100 | 24 | 15 | 60 |
| 75340B1622100 | M16x221 | F | 100 | 16 | 110 | 80 | | 160 | 100 | 24 | 15 | 60 |
| 75340B1626100 | M16x261 | H | 140 | 16 | 110 | 80 | | 160 | 100 | 24 | 10 | 40 |

* Produit raccourcis avec profondeur d'ancrage réduite

** Produit non couvert par l'ETE-22/0792

FM 753 evo Pasador de anclaje opción 7

Design capacities - single anchor - no edge distances

| Modelo | Dimensions [ØxL] | Design capacity - Non-cracked concrete ⁽³⁾ [kN] | | | | | | | | Bending moment MRd [Nm] |
|---------------|------------------|--|--------|--------|--------|-----------------------------------|--------|--------|--------|-------------------------|
| | | Tension - NRd ⁽¹⁾ | | | | Shear - VRd ⁽¹⁻²⁾ [kN] | | | | |
| | | C20/25 | C30/37 | C40/50 | C50/60 | C20/25 | C30/37 | C40/50 | C50/60 | |
| 75340B0604800 | M6x48** | 4 | 4 | 4 | 4.1 | 5.1 | 5.1 | 5.1 | 5.1 | 7.3 |
| 75340B0606500 | M6x65 | 4 | 4 | 4 | 4.1 | 5.1 | 5.1 | 5.1 | 5.1 | 7.3 |
| 75340B0608500 | M6x85 | 4 | 4 | 4 | 4.1 | 5.1 | 5.1 | 5.1 | 5.1 | 7.3 |
| 75340B0806800 | M8x68 | 8 | 8.3 | 8.5 | 8.7 | 7.9 | 7.9 | 7.9 | 7.9 | 21.5 |
| 75340B0807300 | M8x73 | 8 | 8.3 | 8.5 | 8.7 | 7.9 | 7.9 | 7.9 | 7.9 | 21.5 |
| 75340B0808300 | M8x83 | 8 | 8.3 | 8.5 | 8.7 | 7.9 | 7.9 | 7.9 | 7.9 | 21.5 |
| 75340B0809300 | M8x93 | 8 | 8.3 | 8.5 | 8.7 | 7.9 | 7.9 | 7.9 | 7.9 | 21.5 |
| 75340B0810300 | M8x103 | 8 | 8.3 | 8.5 | 8.7 | 7.9 | 7.9 | 7.9 | 7.9 | 21.5 |
| 75340B0811300 | M8x113 | 8 | 8.3 | 8.5 | 8.7 | 7.9 | 7.9 | 7.9 | 7.9 | 21.5 |
| 75340B0813300 | M8x133 | 8 | 8.3 | 8.5 | 8.7 | 7.9 | 7.9 | 7.9 | 7.9 | 21.5 |
| 75340B0816300 | M8x163 | 8 | 8.3 | 8.5 | 8.7 | 7.9 | 7.9 | 7.9 | 7.9 | 21.5 |
| 75340B1007800 | M10x78 | 11.6 | 14.2 | 16.4 | 18.3 | 11.6 | 11.6 | 11.6 | 11.6 | 37.3 |
| 75340B1008300 | M10x83 | 11.6 | 14.2 | 16.4 | 18.3 | 11.6 | 11.6 | 11.6 | 11.6 | 37.3 |
| 75340B1009300 | M10x93 | 11.6 | 14.2 | 16.4 | 18.3 | 11.6 | 11.6 | 11.6 | 11.6 | 37.3 |
| 75340B1010300 | M10x103 | 11.6 | 14.2 | 16.4 | 18.3 | 11.6 | 11.6 | 11.6 | 11.6 | 37.3 |
| 75340B1011300 | M10x113 | 11.6 | 14.2 | 16.4 | 18.3 | 11.6 | 11.6 | 11.6 | 11.6 | 37.3 |
| 75340B1012300 | M10x123 | 11.6 | 14.2 | 16.4 | 18.3 | 11.6 | 11.6 | 11.6 | 11.6 | 37.3 |
| 75340B1014300 | M10x143 | 11.6 | 14.2 | 16.4 | 18.3 | 11.6 | 11.6 | 11.6 | 11.6 | 37.3 |
| 75340B1017300 | M10x173 | 11.6 | 14.2 | 16.4 | 18.3 | 11.6 | 11.6 | 11.6 | 11.6 | 37.3 |
| 75340B1021300 | M10x213 | 11.6 | 14.2 | 16.4 | 18.3 | 11.6 | 11.6 | 11.6 | 11.6 | 37.3 |
| 75340B1210400 | M12x104 | 17.2 | 20.8 | 23.9 | 26.7 | 20.1 | 20.1 | 20.1 | 20.1 | 65.3 |
| 75340B1210900 | M12x109 | 17.2 | 20.8 | 23.9 | 26.7 | 20.1 | 20.1 | 20.1 | 20.1 | 65.3 |
| 75340B1211900 | M12x119 | 17.2 | 20.8 | 23.9 | 26.7 | 20.1 | 20.1 | 20.1 | 20.1 | 65.3 |
| 75340B1212900 | M12x129 | 17.2 | 20.8 | 23.9 | 26.7 | 20.1 | 20.1 | 20.1 | 20.1 | 65.3 |
| 75340B1213900 | M12x139 | 17.2 | 20.8 | 23.9 | 26.7 | 20.1 | 20.1 | 20.1 | 20.1 | 65.3 |
| 75340B1214900 | M12x149 | 17.2 | 20.8 | 23.9 | 26.7 | 20.1 | 20.1 | 20.1 | 20.1 | 65.3 |
| 75340B1217900 | M12x179 | 17.2 | 20.8 | 23.9 | 26.7 | 20.1 | 20.1 | 20.1 | 20.1 | 65.3 |
| 75340B1219900 | M12x199 | 17.2 | 20.8 | 23.9 | 26.7 | 20.1 | 20.1 | 20.1 | 20.1 | 65.3 |
| 75340B1221900 | M12x219 | 17.2 | 20.8 | 23.9 | 26.7 | 20.1 | 20.1 | 20.1 | 20.1 | 65.3 |
| 75340B1223900 | M12x239 | 17.2 | 20.8 | 23.9 | 26.7 | 20.1 | 20.1 | 20.1 | 20.1 | 65.3 |
| 75340B1225900 | M12x259 | 17.2 | 20.8 | 23.9 | 26.7 | 20.1 | 20.1 | 20.1 | 20.1 | 65.3 |
| 75340B1611000 | M16x110** | 23.5 | 27 | 29.8 | 32.4 | 37.5 | 37.5 | 37.5 | 37.5 | 155.3 |
| 75340B1615100 | M16x151 | 23.5 | 27 | 29.8 | 32.4 | 37.5 | 37.5 | 37.5 | 37.5 | 155.3 |
| 75340B1617100 | M16x171 | 23.5 | 27 | 29.8 | 32.4 | 37.5 | 37.5 | 37.5 | 37.5 | 155.3 |
| 75340B1620100 | M16x201 | 23.5 | 27 | 29.8 | 32.4 | 37.5 | 37.5 | 37.5 | 37.5 | 155.3 |
| 75340B1622100 | M16x221 | 23.5 | 27 | 29.8 | 32.4 | 37.5 | 37.5 | 37.5 | 37.5 | 155.3 |
| 75340B1626100 | M16x261 | 23.5 | 27 | 29.8 | 32.4 | 37.5 | 37.5 | 37.5 | 37.5 | 155.3 |

FM 753 evo

Pasador de anclaje opción 7

| Modelo | Dimensions [ØxL] | Design capacity - Non-cracked concrete ⁽³⁾ [kN] | | | | | | | | Bending moment MRd [Nm] |
|--------|------------------|--|--------|--------|--------|-----------------------------------|--------|--------|--------|-------------------------|
| | | Tension - NRd ⁽¹⁾ | | | | Shear - VRd ⁽¹⁻²⁾ [kN] | | | | |
| | | C20/25 | C30/37 | C40/50 | C50/60 | C20/25 | C30/37 | C40/50 | C50/60 | |

1. The design loads have been calculated using the partial safety factors for resistances stated in ETA-approval(s). The loading figures are valid for unreinforced concrete and reinforced concrete with a rebar spacing $s \geq 15$ cm (any diameter) or with a rebar spacing $s \geq 10$ cm, if the rebar diameter is 10mm or smaller.
2. The figures for shear are based on a single anchor without influence of concrete edges. For anchorages close to edges ($c \leq \max [10 \text{ hef}; 60d]$) the concrete edge failure shall be checked per ETAG 001, Annex C, design method A.
3. Concrete is considered non-cracked when the tensile stress within the concrete is $\sigma_L + \sigma_R \leq 0$. In the absence of detailed verification $\sigma_R = 3 \text{ N/mm}^2$ can be assumed (σ_L equals the tensile stress within the concrete induced by external loads, anchors loads included).

FM 753 evo Pasador de anclaje opción 7

Recommended capacities - single anchor - no edge distances

| Modelo | Dimensions [ØxL] | Recommended capacity - Non-cracked concrete | | | | | | | | Bending moment Mrec ⁽¹⁻⁶⁾ [Nm] |
|---------------|------------------|---|--------|--------|--------|------------------------------------|--------|--------|--------|---|
| | | Tension - Nrec ⁽¹⁻²⁾ [kN] | | | | Shear - Vrec ⁽¹⁻³⁾ [kN] | | | | |
| | | C20/25 | C30/37 | C40/50 | C50/60 | C20/25 | C30/37 | C40/50 | C50/60 | |
| 75340B0604800 | M6x48*/** | 2.9 | 2.9 | 2.9 | 2.9 | 3.6 | 3.6 | 3.6 | 3.6 | 5.2 |
| 75340B0606500 | M6x65 | 2.9 | 2.9 | 2.9 | 2.9 | 3.6 | 3.6 | 3.6 | 3.6 | 5.2 |
| 75340B0608500 | M6x85 | 2.9 | 2.9 | 2.9 | 2.9 | 3.6 | 3.6 | 3.6 | 3.6 | 5.2 |
| 75340B0806800 | M8x68 | 5.7 | 5.9 | 6.1 | 6.2 | 5.6 | 5.6 | 5.6 | 5.6 | 13.4 |
| 75340B0807300 | M8x73 | 5.7 | 5.9 | 6.1 | 6.2 | 5.6 | 5.6 | 5.6 | 5.6 | 13.4 |
| 75340B0808300 | M8x83 | 5.7 | 5.9 | 6.1 | 6.2 | 5.6 | 5.6 | 5.6 | 5.6 | 13.4 |
| 75340B0809300 | M8x93 | 5.7 | 5.9 | 6.1 | 6.2 | 5.6 | 5.6 | 5.6 | 5.6 | 13.4 |
| 75340B0810300 | M8x103 | 5.7 | 5.9 | 6.1 | 6.2 | 5.6 | 5.6 | 5.6 | 5.6 | 13.4 |
| 75340B0811300 | M8x113 | 5.7 | 5.9 | 6.1 | 6.2 | 5.6 | 5.6 | 5.6 | 5.6 | 13.4 |
| 75340B0813300 | M8x133 | 5.7 | 5.9 | 6.1 | 6.2 | 5.6 | 5.6 | 5.6 | 5.6 | 13.4 |
| 75340B0816300 | M8x163 | 5.7 | 5.9 | 6.1 | 6.2 | 5.6 | 5.6 | 5.6 | 5.6 | 13.4 |
| 75340B1007800 | M10x78 | 8.3 | 10.1 | 11.7 | 13.1 | 8.3 | 8.3 | 8.3 | 8.3 | 26.6 |
| 75340B1008300 | M10x83 | 8.3 | 10.1 | 11.7 | 13.1 | 8.3 | 8.3 | 8.3 | 8.3 | 26.6 |
| 75340B1009300 | M10x93 | 8.3 | 10.1 | 11.7 | 13.1 | 8.3 | 8.3 | 8.3 | 8.3 | 26.6 |
| 75340B1010300 | M10x103 | 8.3 | 10.1 | 11.7 | 13.1 | 8.3 | 8.3 | 8.3 | 8.3 | 26.6 |
| 75340B1011300 | M10x113 | 8.3 | 10.1 | 11.7 | 13.1 | 8.3 | 8.3 | 8.3 | 8.3 | 26.6 |
| 75340B1012300 | M10x123 | 8.3 | 10.1 | 11.7 | 13.1 | 8.3 | 8.3 | 8.3 | 8.3 | 26.6 |
| 75340B1014300 | M10x143 | 8.3 | 10.1 | 11.7 | 13.1 | 8.3 | 8.3 | 8.3 | 8.3 | 26.6 |
| 75340B1017300 | M10x173 | 8.3 | 10.1 | 11.7 | 13.1 | 8.3 | 8.3 | 8.3 | 8.3 | 26.6 |
| 75340B1021300 | M10x213 | 8.3 | 10.1 | 11.7 | 13.1 | 8.3 | 8.3 | 8.3 | 8.3 | 26.6 |
| 75340B1210400 | M12x104 | 12.3 | 14.9 | 17.1 | 19.1 | 14.4 | 14.4 | 14.4 | 14.4 | 46.6 |
| 75340B1210900 | M12x109 | 12.3 | 14.9 | 17.1 | 19.1 | 14.4 | 14.4 | 14.4 | 14.4 | 46.6 |
| 75340B1211900 | M12x119 | 12.3 | 14.9 | 17.1 | 19.1 | 14.4 | 14.4 | 14.4 | 14.4 | 46.6 |
| 75340B1212900 | M12x129 | 12.3 | 14.9 | 17.1 | 19.1 | 14.4 | 14.4 | 14.4 | 14.4 | 46.6 |
| 75340B1213900 | M12x139 | 12.3 | 14.9 | 17.1 | 19.1 | 14.4 | 14.4 | 14.4 | 14.4 | 46.6 |
| 75340B1214900 | M12x149 | 12.3 | 14.9 | 17.1 | 19.1 | 14.4 | 14.4 | 14.4 | 14.4 | 46.6 |
| 75340B1217900 | M12x179 | 12.3 | 14.9 | 17.1 | 19.1 | 14.4 | 14.4 | 14.4 | 14.4 | 46.6 |
| 75340B1219900 | M12x199 | 12.3 | 14.9 | 17.1 | 19.1 | 14.4 | 14.4 | 14.4 | 14.4 | 46.6 |
| 75340B1221900 | M12x219 | 12.3 | 14.9 | 17.1 | 19.1 | 14.4 | 14.4 | 14.4 | 14.4 | 46.6 |
| 75340B1223900 | M12x239 | 12.3 | 14.9 | 17.1 | 19.1 | 14.4 | 14.4 | 14.4 | 14.4 | 46.6 |
| 75340B1225900 | M12x259 | 12.3 | 14.9 | 17.1 | 19.1 | 14.4 | 14.4 | 14.4 | 14.4 | 46.6 |
| 75340B1611000 | M16x110*/** | 16.8 | 19.3 | 21.3 | 23.1 | 26.8 | 26.8 | 26.8 | 26.8 | 110.9 |
| 75340B1615100 | M16x151 | 16.8 | 19.3 | 21.3 | 23.1 | 26.8 | 26.8 | 26.8 | 26.8 | 110.9 |
| 75340B1617100 | M16x171 | 16.8 | 19.3 | 21.3 | 23.1 | 26.8 | 26.8 | 26.8 | 26.8 | 110.9 |
| 75340B1620100 | M16x201 | 16.8 | 19.3 | 21.3 | 23.1 | 26.8 | 26.8 | 26.8 | 26.8 | 110.9 |
| 75340B1622100 | M16x221 | 16.8 | 19.3 | 21.3 | 23.1 | 26.8 | 26.8 | 26.8 | 26.8 | 110.9 |
| 75340B1626100 | M16x261 | 16.8 | 19.3 | 21.3 | 23.1 | 26.8 | 26.8 | 26.8 | 26.8 | 110.9 |

FM 753 evo

Pasador de anclaje opción 7

| Modelo | Dimensions [ØxL] | Recommended capacity - Non-cracked concrete | | | | | | | | Bending moment Mrec ⁽¹⁻⁶⁾ [Nm] |
|--|------------------|---|--------|--------|--------|------------------------------------|--------|--------|--------|---|
| | | Tension - Nrec ⁽¹⁻²⁾ [kN] | | | | Shear - Vrec ⁽¹⁻³⁾ [kN] | | | | |
| | | C20/25 | C30/37 | C40/50 | C50/60 | C20/25 | C30/37 | C40/50 | C50/60 | |
| <p>1. The recommended loads have been calculated using the partial safety factors for resistances stated in ETA-approval(s) and with a partial safety factor for actions of $\gamma F=1.4$. The loading figures are valid for unreinforced concrete and reinforced concrete with a rebar spacing $s \geq 15$ cm (any diameter) or with a rebar spacing $s \geq 10$ cm, if the rebar diameter is 10 mm or smaller.</p> <p>2. The figures for shear are based on a single anchor without influence of concrete edges. For anchorages close to edges ($c \leq \max [10 \text{ hef}; 60d]$) the concrete edge failure shall be checked per ETAG 001, Annex C, design method A.</p> <p>3. Concrete is considered non-cracked when the tensile stress within the concrete is $\sigma_L + \sigma_R \leq 0$. In the absence of detailed verification $\sigma_R = 3 \text{ N/mm}^2$ can be assumed (σ_L equals the tensile stress within the concrete induced by external loads, anchors loads included).</p> | | | | | | | | | | |

FM 753 evo Pasador de anclaje opción 7

Design capacities - single anchor - no edge distances - reduced embedment depth

| Modelo | Dimensions [ØxL] | Reduced embedment depth [h _{ef,r}] | Characteristic spacing for h _{ef,r} ⁽⁵⁾ [S _{cr,red}] [mm] | Characteristic edge distance for h _{ef,r} [C _{cr,red}] [mm] | Min. spacing for h _{ef,r} [S _{min,red}] [mm] | Min. edge distance for h _{ef,r} [C _{min,red}] | Design loads - Tension & Shear - N _{Rd} [kN] |
|---------------|------------------|--|---|--|---|--|---|
| 75340B0604800 | M6x48** | 30 | 90 | 45 | 30 | 40 | 2.2 |
| 75340B0606500 | M6x65 | 30 | 90 | 45 | 30 | 40 | 2.2 |
| 75340B0608500 | M6x85 | 30 | 90 | 45 | 30 | 40 | 2.2 |
| 75340B0806800 | M8x68 | 30 | 90 | 45 | 40 | 40 | 2.4 |
| 75340B0807300 | M8x73 | 30 | 90 | 45 | 40 | 40 | 2.4 |
| 75340B0808300 | M8x83 | 30 | 90 | 45 | 40 | 40 | 2.4 |
| 75340B0809300 | M8x93 | 30 | 90 | 45 | 40 | 40 | 2.4 |
| 75340B0810300 | M8x103 | 30 | 90 | 45 | 40 | 40 | 2.4 |
| 75340B0811300 | M8x113 | 30 | 90 | 45 | 40 | 40 | 2.4 |
| 75340B0813300 | M8x133 | 30 | 90 | 45 | 40 | 40 | 2.4 |
| 75340B0816300 | M8x163 | 30 | 90 | 45 | 40 | 40 | 2.4 |
| 75340B1007800 | M10x78 | 35 | 105 | 55 | 50 | 50 | 4.7 |
| 75340B1008300 | M10x83 | 35 | 105 | 55 | 50 | 50 | 4.7 |
| 75340B1009300 | M10x93 | 35 | 105 | 55 | 50 | 50 | 4.7 |
| 75340B1010300 | M10x103 | 35 | 105 | 55 | 50 | 50 | 4.7 |
| 75340B1011300 | M10x113 | 35 | 105 | 55 | 50 | 50 | 4.7 |
| 75340B1012300 | M10x123 | 35 | 105 | 55 | 50 | 50 | 4.7 |
| 75340B1014300 | M10x143 | 35 | 105 | 55 | 50 | 50 | 4.7 |
| 75340B1017300 | M10x173 | 35 | 105 | 55 | 50 | 50 | 4.7 |
| 75340B1021300 | M10x213 | 35 | 105 | 55 | 50 | 50 | 4.7 |
| 75340B1210400 | M12x104 | 50 | 150 | 75 | 70 | 70 | 7.2 |
| 75340B1210900 | M12x109 | 50 | 150 | 75 | 70 | 70 | 7.2 |
| 75340B1211900 | M12x119 | 50 | 150 | 75 | 70 | 70 | 7.2 |
| 75340B1212900 | M12x129 | 50 | 150 | 75 | 70 | 70 | 7.2 |
| 75340B1213900 | M12x139 | 50 | 150 | 75 | 70 | 70 | 7.2 |
| 75340B1214900 | M12x149 | 50 | 150 | 75 | 70 | 70 | 7.2 |
| 75340B1217900 | M12x179 | 50 | 150 | 75 | 70 | 70 | 7.2 |
| 75340B1219900 | M12x199 | 50 | 150 | 75 | 70 | 70 | 7.2 |
| 75340B1221900 | M12x219 | 50 | 150 | 75 | 70 | 70 | 7.2 |
| 75340B1223900 | M12x239 | 50 | 150 | 75 | 70 | 70 | 7.2 |
| 75340B1225900 | M12x259 | 50 | 150 | 75 | 70 | 70 | 7.2 |
| 75340B1611000 | M16x110** | 59 | 180 | 90 | 90 | 90 | 9.2 |
| 75340B1615100 | M16x151 | 59 | 180 | 90 | 90 | 90 | 9.2 |
| 75340B1617100 | M16x171 | 59 | 180 | 90 | 90 | 90 | 9.2 |
| 75340B1620100 | M16x201 | 59 | 180 | 90 | 90 | 90 | 9.2 |
| 75340B1622100 | M16x221 | 59 | 180 | 90 | 90 | 90 | 9.2 |
| 75340B1626100 | M16x261 | 59 | 180 | 90 | 90 | 90 | 9.2 |

Shear value valid with distance from the edge $c > 10 \times h_{ef,r}$

FM 753 evo Pasador de anclaje opción 7

Recommended capacities - single anchor - no edge distances - reduced embedment depth

| Modelo | Dimensions [ØxL] | Reduced embedment depth [h _{ef,r}] | Characteristic spacing for h _{ef,r} ⁽⁵⁾ [S _{cr,red}] [mm] | Characteristic edge distance for h _{ef,r} [C _{cr,red}] [mm] | Min. spacing for h _{ef,r} [S _{min,red}] [mm] | Min. edge distance for h _{ef,r} [C _{min,red}] | Recommended loads - Tension & Shear - N _{rec} [kN] |
|---------------|------------------|--|---|--|---|--|---|
| 75340B0604800 | M6x48**/** | 30 | 90 | 45 | 30 | 40 | 1.6 |
| 75340B0606500 | M6x65 | 30 | 90 | 45 | 30 | 40 | 1.6 |
| 75340B0608500 | M6x85 | 30 | 90 | 45 | 30 | 40 | 1.6 |
| 75340B0806800 | M8x68 | 30 | 90 | 45 | 40 | 40 | 1.7 |
| 75340B0807300 | M8x73 | 30 | 90 | 45 | 40 | 40 | 1.7 |
| 75340B0808300 | M8x83 | 30 | 90 | 45 | 40 | 40 | 1.7 |
| 75340B0809300 | M8x93 | 30 | 90 | 45 | 40 | 40 | 1.7 |
| 75340B0810300 | M8x103 | 30 | 90 | 45 | 40 | 40 | 1.7 |
| 75340B0811300 | M8x113 | 30 | 90 | 45 | 40 | 40 | 1.7 |
| 75340B0813300 | M8x133 | 30 | 90 | 45 | 40 | 40 | 1.7 |
| 75340B0816300 | M8x163 | 30 | 90 | 45 | 40 | 40 | 1.7 |
| 75340B1007800 | M10x78 | 35 | 105 | 55 | 50 | 50 | 3.4 |
| 75340B1008300 | M10x83 | 35 | 105 | 55 | 50 | 50 | 3.4 |
| 75340B1009300 | M10x93 | 35 | 105 | 55 | 50 | 50 | 3.4 |
| 75340B1010300 | M10x103 | 35 | 105 | 55 | 50 | 50 | 3.4 |
| 75340B1011300 | M10x113 | 35 | 105 | 55 | 50 | 50 | 3.4 |
| 75340B1012300 | M10x123 | 35 | 105 | 55 | 50 | 50 | 3.4 |
| 75340B1014300 | M10x143 | 35 | 105 | 55 | 50 | 50 | 3.4 |
| 75340B1017300 | M10x173 | 35 | 105 | 55 | 50 | 50 | 3.4 |
| 75340B1021300 | M10x213 | 35 | 105 | 55 | 50 | 50 | 3.4 |
| 75340B1210400 | M12x104 | 50 | 150 | 75 | 70 | 70 | 5.2 |
| 75340B1210900 | M12x109 | 50 | 150 | 75 | 70 | 70 | 5.2 |
| 75340B1211900 | M12x119 | 50 | 150 | 75 | 70 | 70 | 5.2 |
| 75340B1212900 | M12x129 | 50 | 150 | 75 | 70 | 70 | 5.2 |
| 75340B1213900 | M12x139 | 50 | 150 | 75 | 70 | 70 | 5.2 |
| 75340B1214900 | M12x149 | 50 | 150 | 75 | 70 | 70 | 5.2 |
| 75340B1217900 | M12x179 | 50 | 150 | 75 | 70 | 70 | 5.2 |
| 75340B1219900 | M12x199 | 50 | 150 | 75 | 70 | 70 | 5.2 |
| 75340B1221900 | M12x219 | 50 | 150 | 75 | 70 | 70 | 5.2 |
| 75340B1223900 | M12x239 | 50 | 150 | 75 | 70 | 70 | 5.2 |
| 75340B1225900 | M12x259 | 50 | 150 | 75 | 70 | 70 | 5.2 |
| 75340B1611000 | M16x110**/** | 59 | 180 | 90 | 90 | 90 | 6.5 |
| 75340B1615100 | M16x151 | 59 | 180 | 90 | 90 | 90 | 6.5 |
| 75340B1617100 | M16x171 | 59 | 180 | 90 | 90 | 90 | 6.5 |
| 75340B1620100 | M16x201 | 59 | 180 | 90 | 90 | 90 | 6.5 |
| 75340B1622100 | M16x221 | 59 | 180 | 90 | 90 | 90 | 6.5 |
| 75340B1626100 | M16x261 | 59 | 180 | 90 | 90 | 90 | 6.5 |

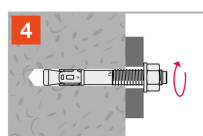
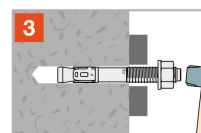
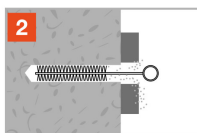
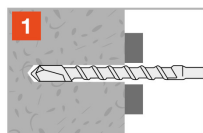
The recommended loads N,V and F derive from the mean ultimate loads and are inclusive of the total safety factor $\gamma=4$ (shear $\gamma=3$).

Shear value valid with distance from the edge $c>10 \times h_{ef,r}$

FM 753 evo

Pasador de anclaje opción 7

Instalación



FM 753 evo

Pasador de anclaje opción 7

Spacing, Edge Distance and Member Thickness

| Modelo | Dimensions [ØxL] | Ø perçage [d _ø] | Profondeur mini perçage [h ₁] | Ø max perçage pièce à fixer [d _f] | Ouverture de clé sur plat [SW] | Couple de serrage [T _{inst}] | Profondeur d'ancrage [h _{ef}] | Ep. mini du support [h _{min}] | Characteristic spacing ⁽⁵⁾ [S _{cr,N}] [mm] | Characteristic edge distance [C _{cr,N}] [mm] | Min. spacing [S _{min}] [mm] | Min. edge distance [C _{min}] [mm] |
|---------------|------------------|-----------------------------|---|---|--------------------------------|--|---|---|---|--|---------------------------------------|---|
| 75340B0604800 | M6x48*/** | 6 | 45 | 7 | 10 | 8 | 30 | 90 | 120 | 60 | 30 | 40 |
| 75340B0606500 | M6x65 | 6 | 55 | 7 | 10 | 8 | 40 | 100 | 120 | 60 | 30 | 40 |
| 75340B0608500 | M6x85 | 6 | 55 | 7 | 10 | 8 | 40 | 100 | 120 | 60 | 30 | 40 |
| 75340B0806800 | M8x68 | 8 | 65 | 9 | 13 | 15 | 45 | 100 | 135 | 68 | 40 | 40 |
| 75340B0807300 | M8x73 | 8 | 65 | 9 | 13 | 15 | 45 | 100 | 135 | 68 | 40 | 40 |
| 75340B0808300 | M8x83 | 8 | 65 | 9 | 13 | 15 | 45 | 100 | 135 | 68 | 40 | 40 |
| 75340B0809300 | M8x93 | 8 | 65 | 9 | 13 | 15 | 45 | 100 | 135 | 68 | 40 | 40 |
| 75340B0810300 | M8x103 | 8 | 65 | 9 | 13 | 15 | 45 | 100 | 135 | 68 | 40 | 40 |
| 75340B0811300 | M8x113 | 8 | 65 | 9 | 13 | 15 | 45 | 100 | 135 | 68 | 40 | 40 |
| 75340B0813300 | M8x133 | 8 | 65 | 9 | 13 | 15 | 45 | 100 | 135 | 68 | 40 | 40 |
| 75340B0816300 | M8x163 | 8 | 65 | 9 | 13 | 15 | 45 | 100 | 135 | 68 | 40 | 40 |
| 75340B1007800 | M10x78 | 10 | 70 | 12 | 17 | 30 | 50 | 100 | 150 | 75 | 50 | 50 |
| 75340B1008300 | M10x83 | 10 | 70 | 12 | 17 | 30 | 50 | 100 | 150 | 75 | 50 | 50 |
| 75340B1009300 | M10x93 | 10 | 70 | 12 | 17 | 30 | 50 | 100 | 150 | 75 | 50 | 50 |
| 75340B1010300 | M10x103 | 10 | 70 | 12 | 17 | 30 | 50 | 100 | 150 | 75 | 50 | 50 |
| 75340B1011300 | M10x113 | 10 | 70 | 12 | 17 | 30 | 50 | 100 | 150 | 75 | 50 | 50 |
| 75340B1012300 | M10x123 | 10 | 70 | 12 | 17 | 30 | 50 | 100 | 150 | 75 | 50 | 50 |
| 75340B1014300 | M10x143 | 10 | 70 | 12 | 17 | 30 | 50 | 100 | 150 | 75 | 50 | 50 |
| 75340B1017300 | M10x173 | 10 | 70 | 12 | 17 | 30 | 50 | 100 | 150 | 75 | 50 | 50 |
| 75340B1021300 | M10x213 | 10 | 70 | 12 | 17 | 30 | 50 | 100 | 150 | 75 | 50 | 50 |
| 75340B1210400 | M12x104 | 12 | 90 | 14 | 19 | 50 | 65 | 130 | 195 | 98 | 70 | 70 |
| 75340B1210900 | M12x109 | 12 | 90 | 14 | 19 | 50 | 65 | 130 | 195 | 98 | 70 | 70 |
| 75340B1211900 | M12x119 | 12 | 90 | 14 | 19 | 50 | 65 | 130 | 195 | 98 | 70 | 70 |
| 75340B1212900 | M12x129 | 12 | 90 | 14 | 19 | 50 | 65 | 130 | 195 | 98 | 70 | 70 |
| 75340B1213900 | M12x139 | 12 | 90 | 14 | 19 | 50 | 65 | 130 | 195 | 98 | 70 | 70 |
| 75340B1214900 | M12x149 | 12 | 90 | 14 | 19 | 50 | 65 | 130 | 195 | 98 | 70 | 70 |
| 75340B1217900 | M12x179 | 12 | 90 | 14 | 19 | 50 | 65 | 130 | 195 | 98 | 70 | 70 |
| 75340B1219900 | M12x199 | 12 | 90 | 14 | 19 | 50 | 65 | 130 | 195 | 98 | 70 | 70 |
| 75340B1221900 | M12x219 | 12 | 90 | 14 | 19 | 50 | 65 | 130 | 195 | 98 | 70 | 70 |
| 75340B1223900 | M12x239 | 12 | 90 | 14 | 19 | 50 | 65 | 130 | 195 | 98 | 70 | 70 |
| 75340B1225900 | M12x259 | 12 | 90 | 14 | 19 | 50 | 65 | 130 | 195 | 98 | 70 | 70 |
| 75340B1611000 | M16x110*/** | 16 | 89 | 18 | 24 | 100 | 80 | 160 | 240 | 120 | 90 | 90 |
| 75340B1615100 | M16x151 | 16 | 110 | 18 | 24 | 100 | 80 | 160 | 240 | 120 | 90 | 90 |
| 75340B1617100 | M16x171 | 16 | 110 | 18 | 24 | 100 | 80 | 160 | 240 | 120 | 90 | 90 |
| 75340B1620100 | M16x201 | 16 | 110 | 18 | 24 | 100 | 80 | 160 | 240 | 120 | 90 | 90 |
| 75340B1622100 | M16x221 | 16 | 110 | 18 | 24 | 100 | 80 | 160 | 240 | 120 | 90 | 90 |
| 75340B1626100 | M16x261 | 16 | 110 | 18 | 24 | 100 | 80 | 160 | 240 | 120 | 90 | 90 |

ZAC des Quatre Chemins - 85400 Sainte Gemme la Plaine - France
 tél : +33 2 51 28 44 00
 fax : +33 2 51 28 44 01
 Copyright by Simpson Strong-Tie®
 Las informaciones contenidas en nuestro sitio internet quedan a la propiedad entera de la empresa Simpson Strong-Tie®
 Son únicamente válidas cuando se unen con los productos comercializados por la empresa Simpson

FM 753 evo
Pasador de anclaje opción 7



www.conectore.com

