

FM-X5 A4

Anclaje nailon largo flexible de nailon - A4 de acero inoxidable

El anclaje nailon largo de nailon FM-X5 es ideal para fijar elementos a cualquier tipo de soporte hueco o macizo que requiera un ajuste manual durante la instalación, como marcos de ventanas o puertas.

El anclaje se suministra premontado con un tornillo de cabeza fresada de acero inoxidable A4 para que se pueda usar en Exterior

Características

Materia

- Tornillo: acero inoxidable A4
- Anclaje: nylon

Ventajas

- Anclaje y tornillo premontados
- Colocar a través del elemento a fijar
- 8 aletas que evitan cualquier rotación dentro del agujero perforado
- Nailon flexible y par de apriete bajo, esto permite ajustar manualmente
- Anclaje en poliamida PA6 que garantiza una muy buena resistencia al envejecimiento

Aplicaciones

Aplicación

- Fijación de cabrios o rastreles
- Fijación de escuadras simples
- Fijación de elementos de carpintería,
- Fijación de carriles y abrazaderas para cables y tubos,
- Fijación de revestimientos delgados en fachadas.

Soportes

- Hormigón sin fisuras
- Hormigón celular,
- piedra natural,
- mampostería maciza y hueca.

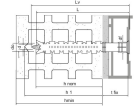
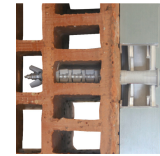


FM-X5 A4

Anclaje nailon largo flexible de nailon - A4 de acero inoxidable

Datos técnicos

Dimensions cheville avec vis tête fraisée



Modelo	Product Reference	Ø agujero x longitud del anclaje [d0xL]. [mm]	Espesor pieza a fijar [tfix,max] [mm]	Profundidad mínima de perforación [h1] [mm]	Profundidad de anclaje nominal [hnom]. [mm]	Esp. míni. de soporte [hmin]. [mm]	Esp. max. agujero pieza a fijar [df] [mm]	Ø tornillo [L_v] [mm]	Longitud tornillo [L_v] [mm]	Boquilla	Ctd por caja	Ctd por embalaje
6430100808000	FM-X5 A4	Ø8x80	10	80	70	120	8.5	6	85	T30	100	1000
6430100812000	FM-X5 A4	Ø8x120	50	80	70	120	8.5	6	125	T30	50	500

Dimensiones

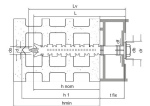


Table "Dimensiones" cannot be displayed : no references available.

Design capacities - single anchor - no edge distances

Modelo	Design capacities - single anchor - no edge distances								
	Design capacity								
	Tension - N _{Rd}				Shear - V _{Rd}				Bending moment MRd [Nm]
	Non-cracked concrete C12/15 [kN]	Non-cracked concrete C16/20 [kN]	Autoclaved aerated concrete AAC [kN]	Solid brick [kN]	Non-cracked concrete C12/15 [kN]	Non-cracked concrete C16/20 [kN]	Autoclaved aerated concrete AAC [kN]	Solid brick [kN]	
6430100808000	0.8	1.4	0.3	1.4	0.8	1.4	0.3	1.4	7.7
6430100812000	0.8	1.4	0.3	1.4	0.8	1.4	0.3	1.4	7.7

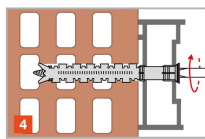
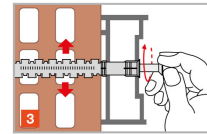
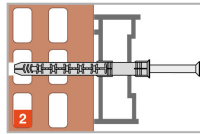
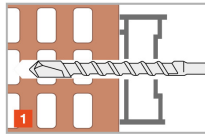
- The design loads have been calculated using the partial safety factors for resistances stated in ETA-approval(s). The loading figures are valid for unreinforced concrete and reinforced concrete with a rebar spacing $s \geq 15$ cm (any diameter) or with a rebar spacing $s \geq 10$ cm, if the rebar diameter is 10mm or smaller.
- The figures for shear are based on a single anchor without influence of concrete edges. For anchorages close to edges ($c \leq \max [10 \text{ hef}; 60d]$) the concrete edge failure shall be checked per ETAG 001, Annex C, design method A.
- Concrete is considered non-cracked when the tensile stress within the concrete is $\sigma_L + \sigma_R \leq 0$. In the absence of detailed verification $\sigma_R = 3 \text{ N/mm}^2$ can be assumed (σ_L equals the tensile stress within the concrete induced by external loads, anchors loads included).

*Not covered by ETA-11/0080

FM-X5 A4

Anclaje nailon largo flexible de nailon - A4 de acero inoxidable

Instalación



Installation data

Modelo	Product Reference	Ø agujero x longitud del anclaje [d0xL]. [mm]	Ø drilling hole [d0] [mm]	Min. drill depth [h1] [mm]	Ø drilling fixture [df] [mm]	Wrench size [SW] [mm]
6430100808000	FM-X5 A4	Ø8x80	8	80	8.5	-
6430100812000	FM-X5 A4	Ø8x120	8	80	8.5	-

Spacings and edge distances

Modelo	Product Reference	Ø agujero x longitud del anclaje [d0xL]. [mm]	Spacings and edge distances										
			Non-cracked concrete C12/15				Non-cracked concrete C16/20				Autoclaved aerated concrete AAC		
			Min. edge distance [cmin] [mm]	Min. spacing [smin] [mm]	Characteristic edge distance [ccr,N] [mm]	Minimum thickness of support [hmin] [mm]	Min. edge distance [cmin] [mm]	Min. spacing [smin] [mm]	Characteristic edge distance [ccr,N] [mm]	Minimum thickness of support [hmin] [mm]	Min. edge distance [cmin] [mm]	Min. spacing [smin] [mm]	Minimum thickness of support [hmin] [mm]
6430100808000	FM-X5 A4	Ø8x80	80	80	140	100	60	60	100	100	100	250	200
6430100812000	FM-X5 A4	Ø8x120	80	80	140	100	60	60	100	100	100	250	200

