

GSEXL face fix hangers with exterior flange for large width timber section

GSEXL hangers are used for 201 mm to 270 mm width timber sections.

Features

Materiál

- S250GD + Z275 according to NF EN 10346.
- Thickness: 4 mm.

Vorteile

- Choice of widths according to the ranges indicated.

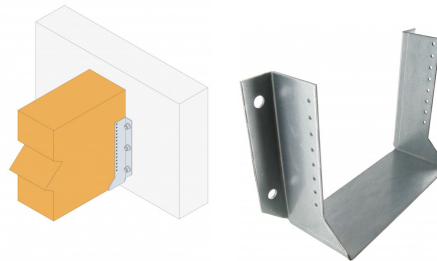
Applications

Support

- Supporting member: steel, concrete or masonry
- Supported member: solid wood, composite lumber, glued-laminated wood, triangular trusses, profiles, etc.

Anwendungsbereich

- Joists, purlins.
- Cladding plates and uprights.
- Rafter ends.
- Refurbishment of existing assemblies, etc.

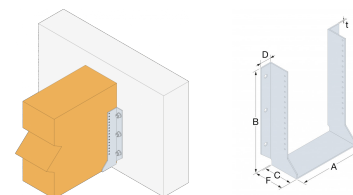


Fixation sur support rigide

GSEXL
face fix hangers with exterior flange for large width timber
section

Technical Data

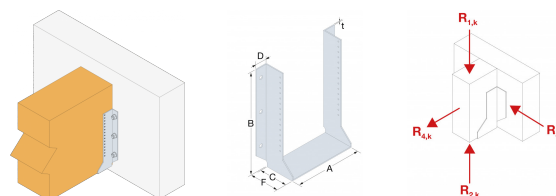
Rozměry a typické hodnoty



Art. nr.	Rozměry a typické hodnoty [mm]						Otvory hlavy	Otvory trámu
	A		B	C	D	t	Ø14	Ø5
	Výška [mm]	Max.						
GSEXL720/4X	201	270	$(720-A)/2$	110	41.5	4	4	16
GSEXL1020/4X	201	270	$(1020-A)/2$	110	41.5	4	6	30

A, B and C dimensions are the internal dimensions of the joist hanger.

Nosnosti - dřevo na beton



Art. nr.	Upevňovací prvky				Charakteristické kapacity - dřevo C24 [kN]		
	Hlava		Trám		$R_{1,k}$	$R_{2,k}$	$R_{3,k}$
	Množství	Typ	Množství	Typ	CNA4,0x50	CNA4,0x50	CNA4,0x50
GSEXL720/4X	4	Ø12*	16	CNA	80	28.4	20
GSEXL1020/4X	6	Ø12*	30	CNA	120	53.2	24.1

Load capacities on concrete shown in this table are given in the case of a full slab fixing. In the context of a different application, it is advisable to the designer to ensure the good anchoring performance (a help for dimensioning is available on our Anchor Designer software, which can be downloaded for free on this website).

*Refer to the Simpson Strong-Tie anchor product range for suitable anchors. Typical anchor solutions depend on the concrete type, spacing and edge distances. For this case a possible solution is FM-753 CRACK 3DG M12x110/10. The values in this table are given for an installation in the middle of a concrete slab. In other installation condition (close to the edge,...), the designer must check the anchor separately (Our free software Anchor Designer is available for download on our website).

GSEXL

face fix hangers with exterior flange for large width timber section

Installation

Befestigung

On supported member:

- CNA annular ring-shank nails dia. 4.0 x 50 mm.
- **CSA screws dia. 5.0 x 40 mm.**

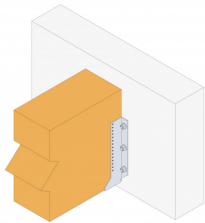
On supporting member:

Steel

- Bolt diam. 12 mm.

Concrete

- **Mechanical anchor diam. 12 mm type BOAX-II M12-102/5**
- **Chemical anchor: AT-HP resin + LMAS M12-110/35 threaded rod.**



Fixation sur support rigide

GSEXL

face fix hangers with exterior flange for large width timber section

