

Technický list

SIMPSON

Strong-Tie

TRZ

Selfdrilling Zamak Plug for Plasterboard

The TRZ zamak plug is designed for fastening in plasterboard and fibreboard. The dowel is screwed into single and double planked board elements with a positive fit and flush with the surface. The fastening elements to be connected can be mounted with wood, -/ sheet metal / chipboard - screws from Ø3.0 mm to Ø4.5 mm.

Features

Material

- Plug: zamak
- Screw: white zinc plated steel

Benefits

- No pilot hole required
- The fixing is set with a screwdriver

Applications

Applications

- Wooden battens
- Curtain track
- Metal profiles

Suitable for

- Aerated concrete
- Plasterboard
- Panels and sheets (partially suitable)

NEW

EZGJ

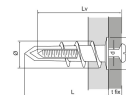


TRZ

Selfdrilling Zamak Plug for Plasterboard

Technical Data

Product Dimensions

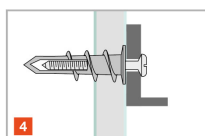
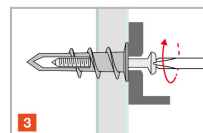
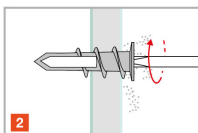
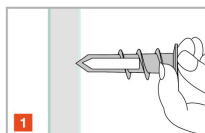


Art. nr.	Product Reference	Plug diameter x length [ØxL] [mm]	Fixture thickness [t _{fix}] [mm]	Nominal embedment depth* [h _{nom}] [mm]	Min. support thickness* [h _{min}] [mm]	Screw diameter [d] [mm]	Screw length [L _v] [mm]	Washer diameter [d _r] [mm]	Qty per box	Qty per outer box
7500601303000	TRZ	13x30	10	30	60	4	35	14	100	2000

Values refer to installation on compact base materials such as aerated concrete.

TRZ Selfdrilling Zamak Plug for Plasterboard

Installation



TRZ
Selfdrilling Zamak Plug for Plasterboard

