

**SIMPSON****Strong-Tie**

# Spikermønster



REV

0

REV DATE

24/10/25

DWG NAME

C\_BTC200\_2D0\_NP\_JTRS-NO

Art. Nr.

=

BTC200-B

Festemidler

=

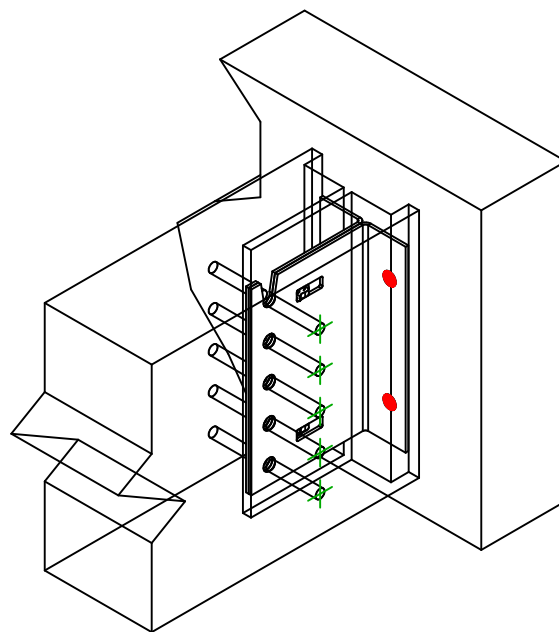
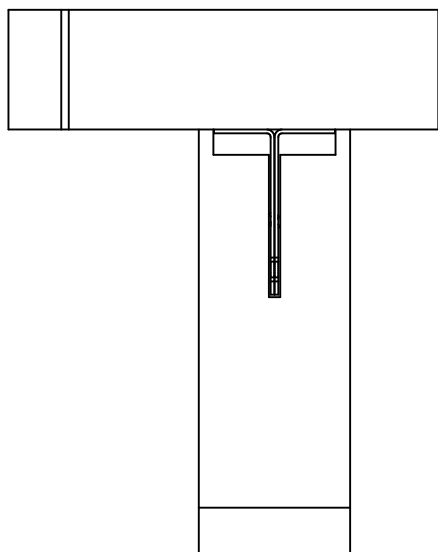
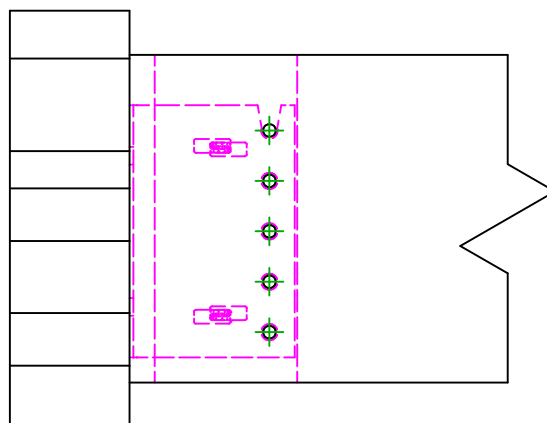
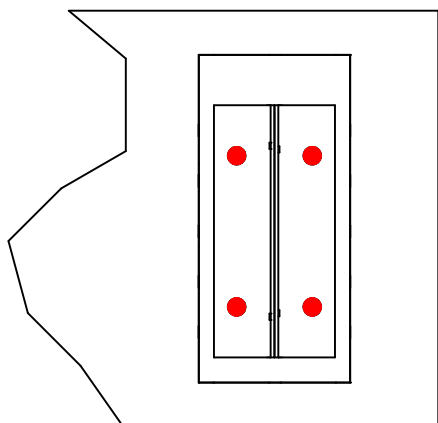
Tre på betong/stål

Tre på betong/stål

Type festemiddel

=

Innfesting til fast underlag

Festemidler i  
hovedbjelke

Symbol



Festemidler

THD

-

-

Art. Nr.

THD10-80/5

-

-

Antall

4

Festemidler i  
sekundærbjelke

Symbol



Festemidler

STD

-

Art. Nr.

STD12

-

Antall

5