

SIMPSON**Strong-Tie**

Schema chiodatura



REV

0

REV DATE

24/10/25

DWG NAME

C_EGCL120_2D0_NP_JTB-IT

Codici

=

EGCL120

Mezzo di giunzione

=

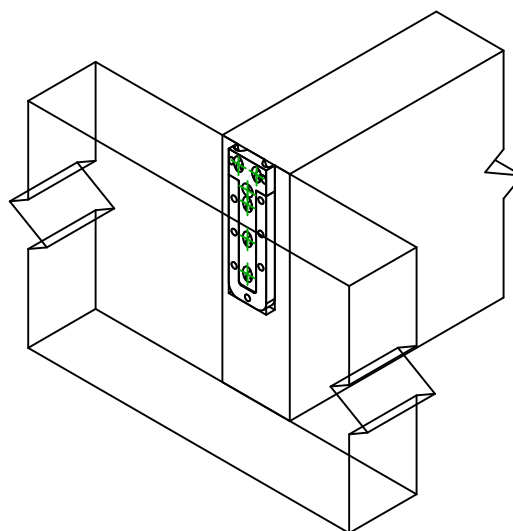
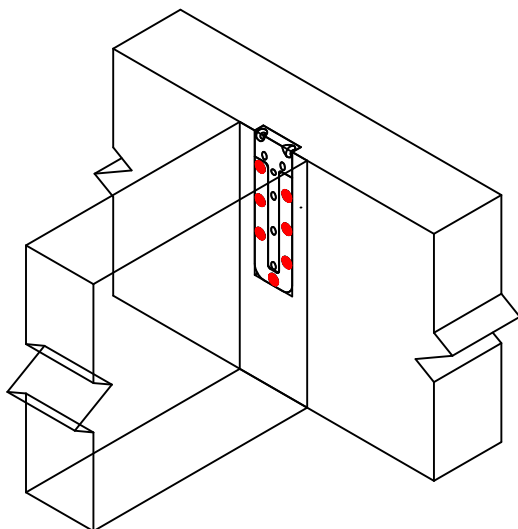
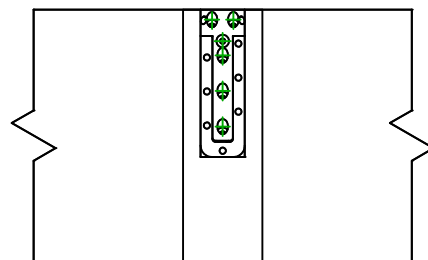
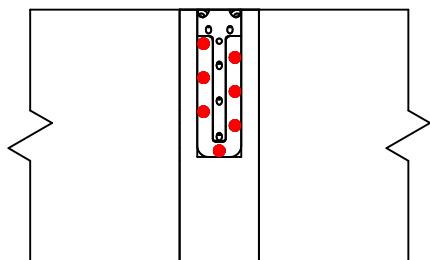
Legno a legno

Travetto a trave

Tipo di fissaggio

=

Chiodatura completa

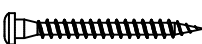
Fissaggio
supporto

Simbolo



Mezzo di giunzione

CSA



Codici

CSA5.0X40

Q.tà

-

-

7

-

-

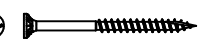
Fissaggio
travetto

Simbolo



Mezzo di giunzione

TTUFS



Codici

TTUFS4.0X60

Q.tà

-

-

6