

SIMPSON

Strong-Tie



REV

0

REV DATE

21/08/24

DWG NAME

C\_AKR285Z\_2D0\_NP\_BTR-17-SE

Art. Nr.

=

AKR285Z

Fästelement

=

Balk till betong/stål

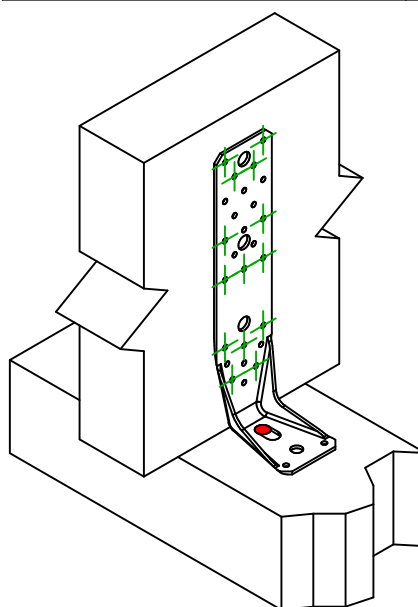
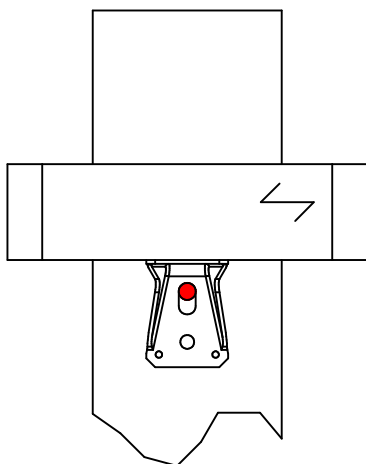
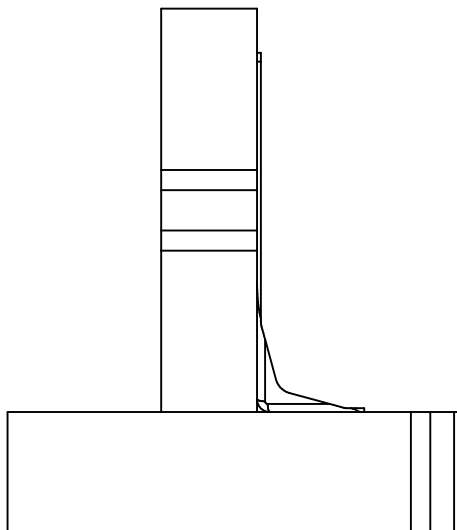
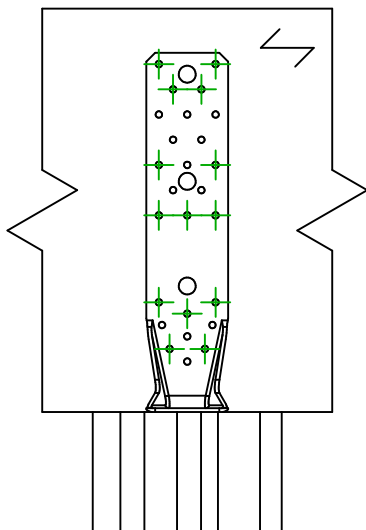
Balk till betong/stål

Typ av infästning

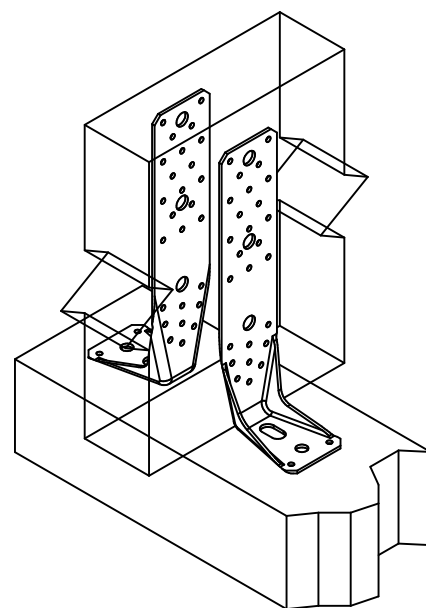
=

Delvis utspikning

Spikmönster nr 17



Montering med 1 beslag



Montering med 2 beslag

Infästning i  
huvudbalk

Symbol

Fästelement

Art. Nr.

Antal



FM753

FM 753 EVO M12X104/5

LMAS

LMASM12-150/35

THD

THD10X80/5

1

Fästelement i  
sekundärbalk

Symbol

Fästelement

Art. Nr.

Antal



CNA

CNA4.0X35/40/50/60

CSA

CSA5.0X35/40/50

14