

**SIMPSON****Strong-Tie**

# Spikermønster



REV

0

REV DATE

24/10/25

DWG NAME

C\_PU140\_2D0\_NP\_B-PTRS-NO

Art. Nr.

=

PU140-B

Festemidler

=

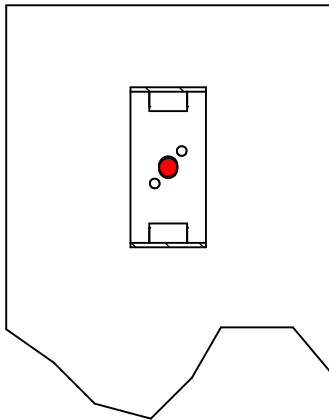
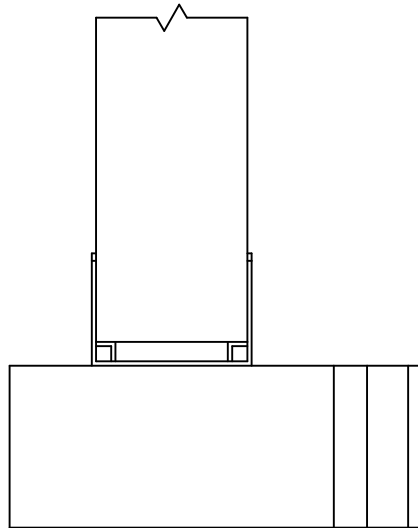
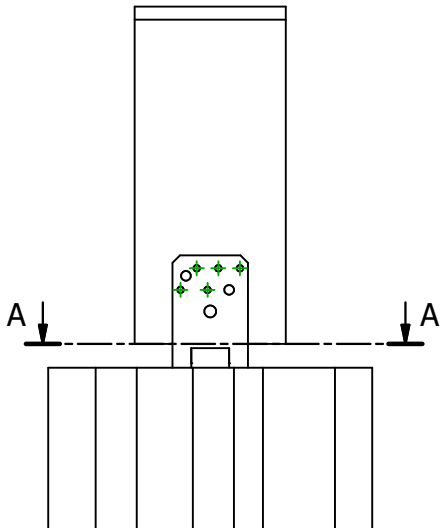
Tre på betong/stål

Søyle til betong eller stål

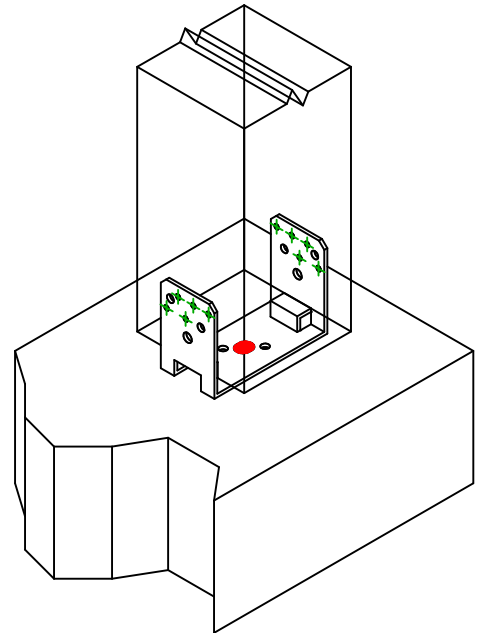
Type festemiddel

=

-



A-A ( 1:7 )

Festemidler i  
hovedbjelke

Symbol

Festemidler

Art. Nr.

Antall



FM-753

FM-753 CRACK 3DG M16X150/30

-

-

1

-

-

Festemidler i  
sekundærbjelke

Symbol

Festemidler

Art. Nr.

Antall



CNA

CNA4.0X50

-

-

10