

SIMPSON**Strong-Tie**

Spikermønster



REV

0

REV DATE

24/10/25

DWG NAME

C_CBH105S_2D0_NP_JTP-NO

Art. Nr.

=

CBH105/2.5S

Festemidler

=

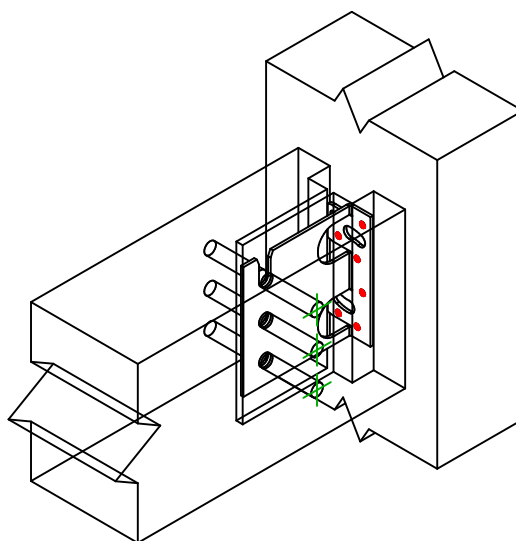
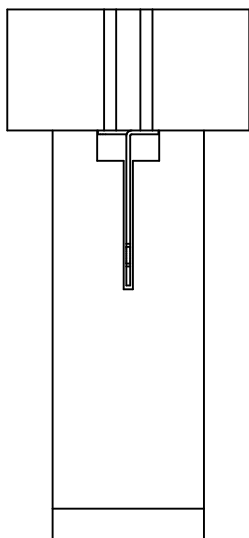
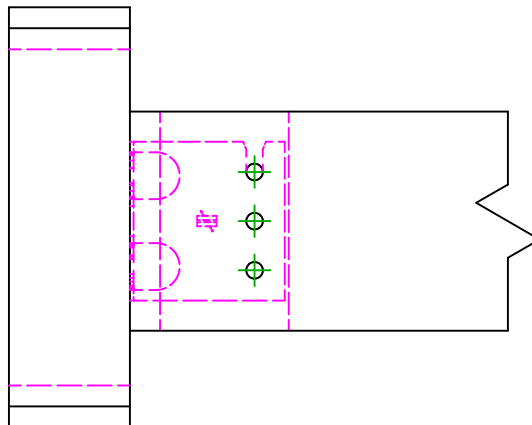
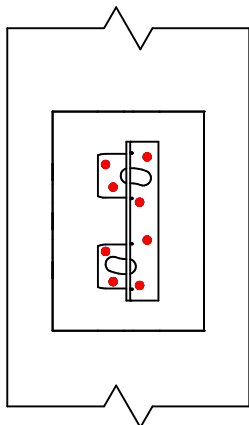
Tre til Tre

Bjelke på søyle

Type festemiddel

=

Full utspikring

Festemidler i
hovedbjelke

Symbol



Festemidler

CSA ©

-

-

Art. Nr.

CSA5.0X40S

-

-

Antall

8

Festemidler i
sekundærbjelke

Symbol



Festemidler

STD ○

-

Art. Nr.

STD10S

-

Antall

3