

Art. Nr.

=

AE48

Fastgørelsesmidler

=

Træ til beton/stål

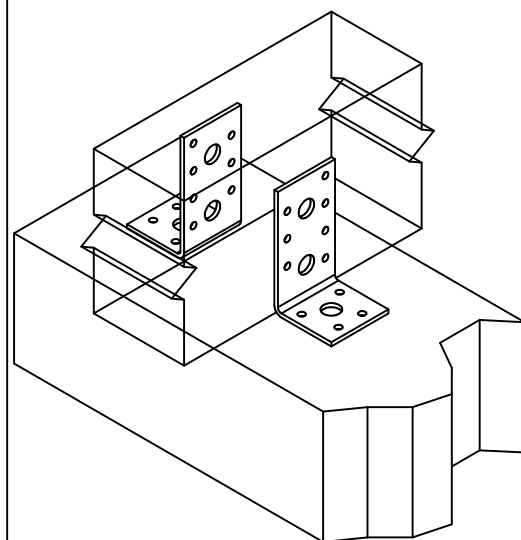
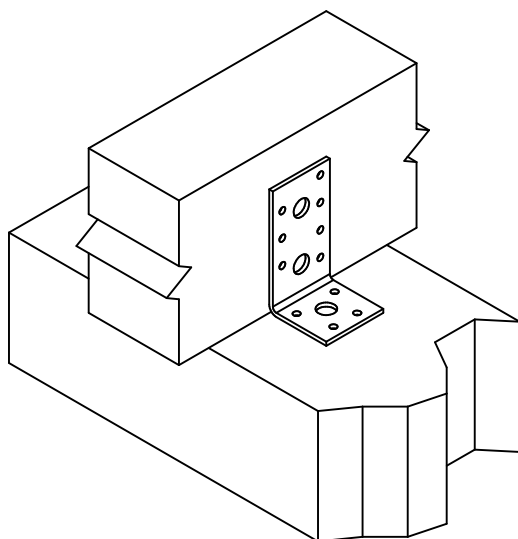
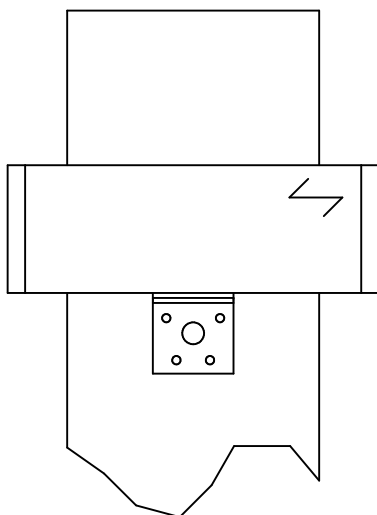
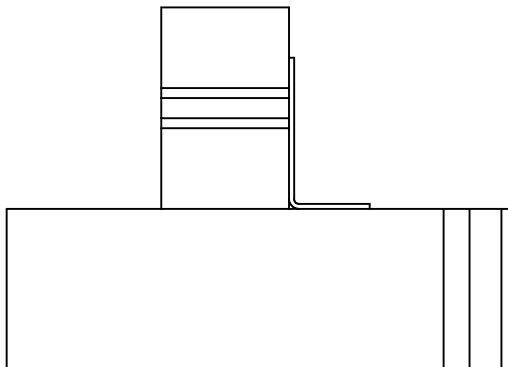
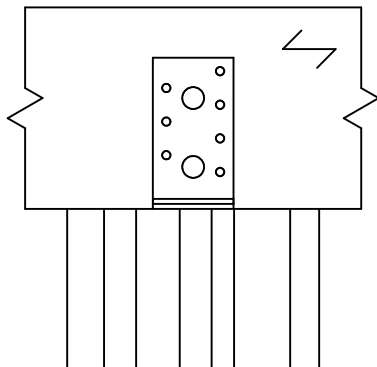
Bjælke til beton eller stål

Type af fastgørelse

=

Delvis udsømning

Udsømnings mønster nr. 4



Installation med 2 beslag

Installation med 1 beslag

Fastgørelsesmidler
i hovedbjælke

Symbol

Fastgørelsesmidler

Art. Nr.

Antal



WA



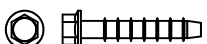
WAM12-104/5

LMAS



LMASM12-150/35

THD



THD10X80/5

1

Fastgørelsesmidler
i sekundær bjælke

Symbol

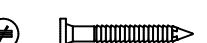
Fastgørelsesmidler

Art. Nr.

Antal



CNA



CNA4.0X40/50/60

CSA



CSA5.0X40/50

6