

SIMPSON**Strong-Tie**

Spikermønster



REV

0

REV DATE

24/10/25

DWG NAME

C_BTC600_2D0_NP_JTRS-NO

Art. Nr.

=

BTC600-B

Festemidler

=

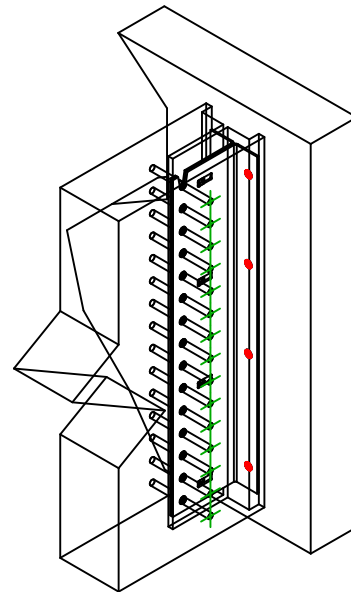
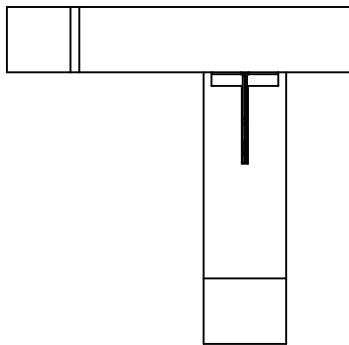
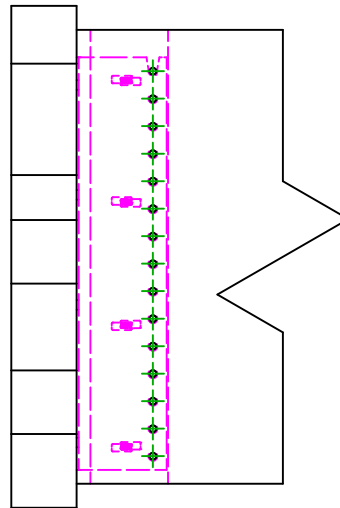
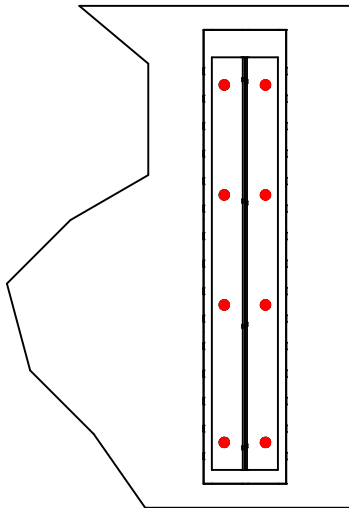
Tre på betong/stål

Tre på betong/stål

Type festemiddel

=

Innfesting til fast underlag



Festemidler i hovedbjelke	Symbol	Festemidler	Art. Nr.	Antall
		THD	THD10-80/5	8
		-	-	
		-	-	
Festemidler i sekundærbjelke	Symbol	Festemidler	Art. Nr.	Antall
		STD	STD12	15
		-	-	