

**SIMPSON****Strong-Tie**

# Spikermønster



REV

0

REV DATE

24/10/25

DWG NAME

C\_BTC520\_2D0\_NP\_JTP-NO

Art. Nr.

=

BTC520-B

Festemidler

=

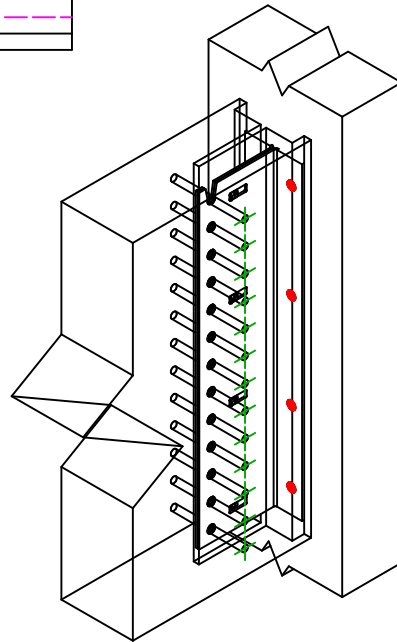
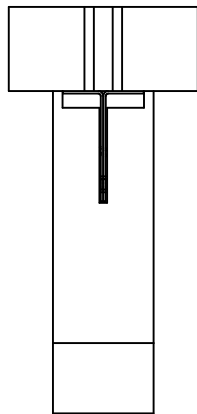
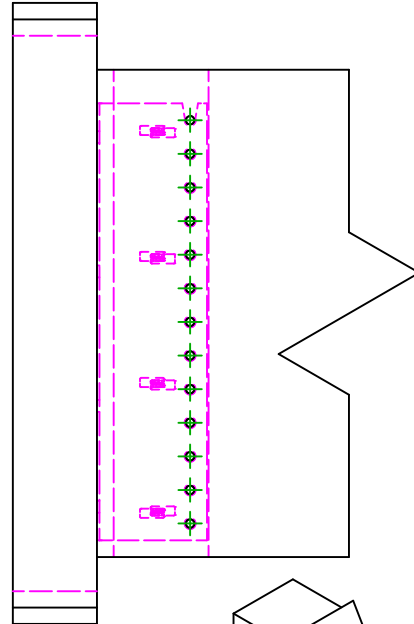
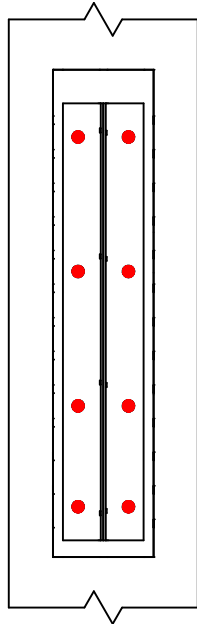
Tre til Tre

Bjelke på søyle

Type festemiddel

=

Montering med SSH



	Symbol	Festemidler	Art. Nr.	Antall
Festemidler i hovedbjelke		SSH	SSH12.0X60	8
		-	-	
		-	-	
	Symbol	Festemidler	Art. Nr.	Antall
Festemidler i sekundærbjelke		STD	STD12	13
		-	-	