

SIMPSON**Strong-Tie**

Spikermønster



REV

0

REV DATE

24/10/25

DWG NAME

C_BTC440_2D0_NP_JTB-NO

Art. Nr.

=

BTC440-B

Festemidler

=

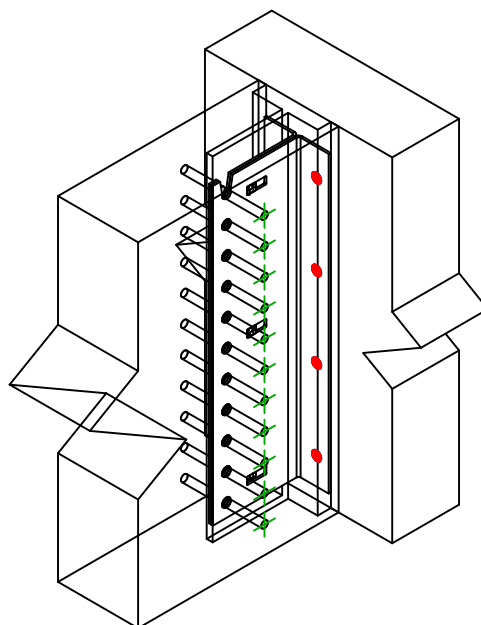
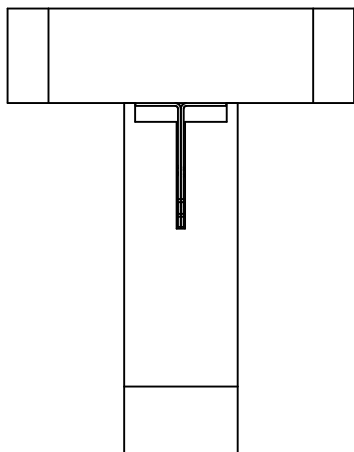
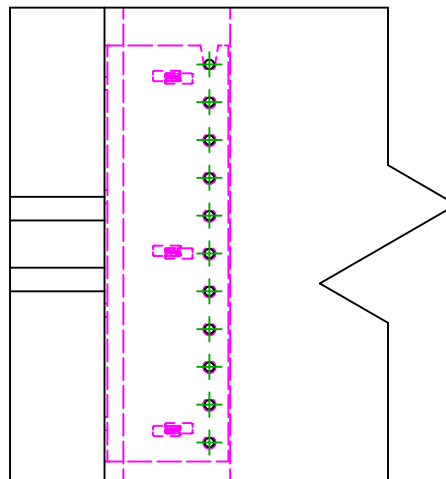
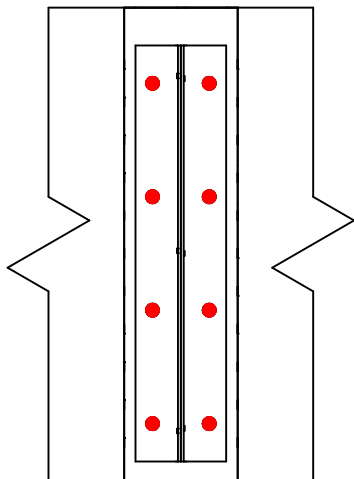
Tre til Tre

Bjelke til bjelke

Type festemiddel

=

Montering med SSH

Festemidler i
hovedbjelke

Symbol



Festemidler

SSH  

Art. Nr.

SSH12.0X60

Antall

8

-

-

-

-

Festemidler i
sekundærbjelke

Symbol



Festemidler

STD  

Art. Nr.

STD12

Antall

11

-

-