

SIMPSON**Strong-Tie**

Schema chiodatura



REV

0

REV DATE

24/10/25

DWG NAME

C_BTC120_2D0_NP_JTRS-IT

Codici

=

BTC120-B

Mezzo di giunzione

=

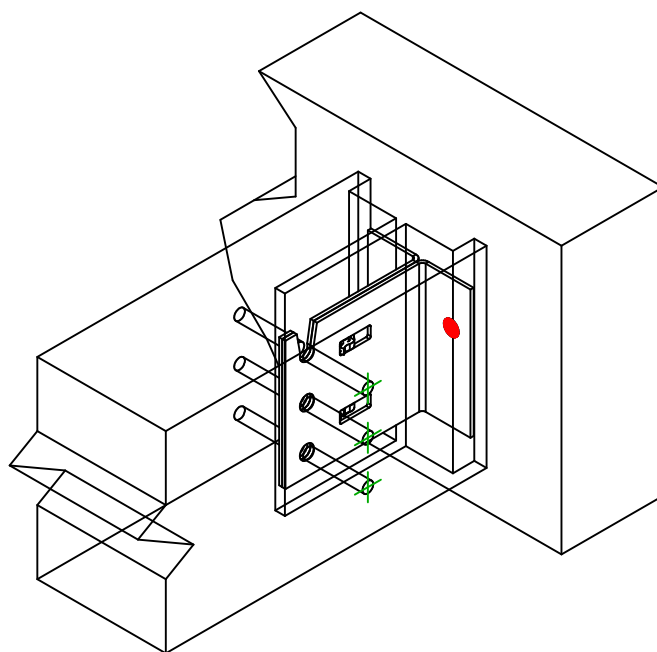
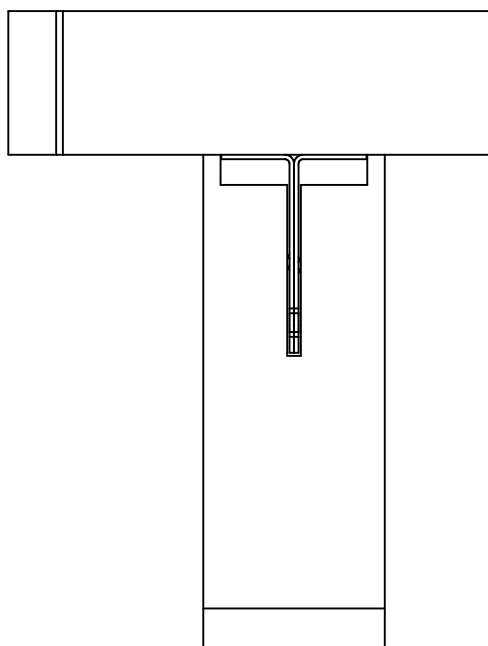
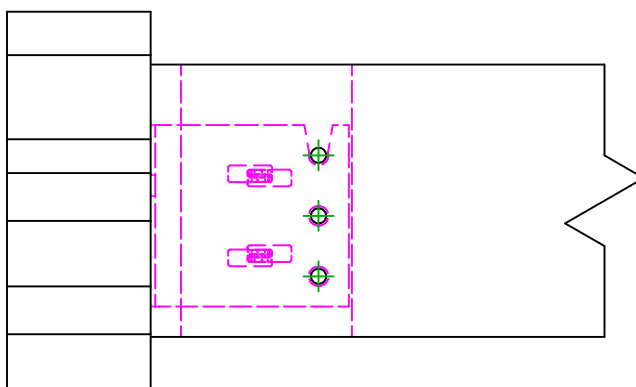
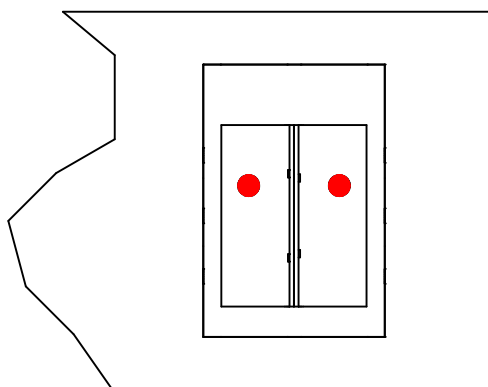
Legnoa calcestruzzo

Legnoa calcestruzzo

Tipo di fissaggio

=

Fissaggio su calcestruzzo

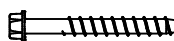
Fissaggio
supporto

Simbolo



Mezzo di giunzione

THD



-

-

Codici

THD10-80/5

-

-

Q.tà

2

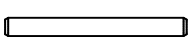
Fissaggio
travetto

Simbolo



Mezzo di giunzione

STD



-

Codici

STD12

-

Q.tà

3