

SIMPSON

Strong-Tie

Spikermønster



REV

0

REV DATE

24/10/25

DWG NAME

C_PPJST90-660_2D0_NP_PTRS-NO

Art. Nr.

=

PPJST90/660

Festemidler

=

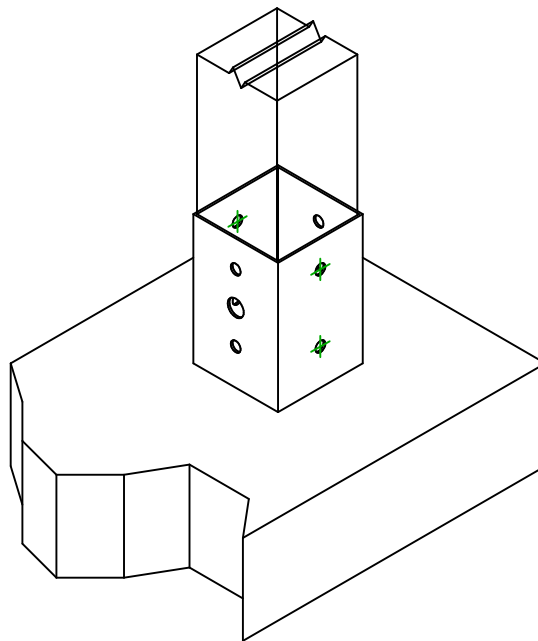
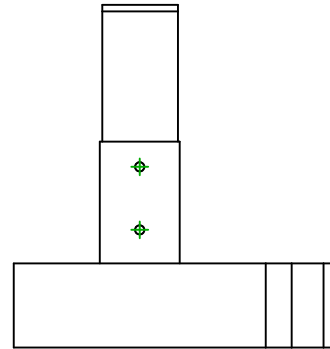
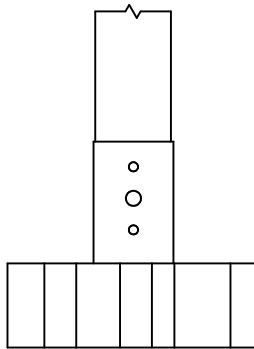
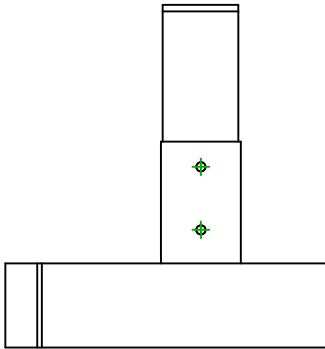
Tre på betong/stål

Søyle til betong eller stål

Type festemiddel

=

-

Festemidler i
hovedbjelke

Symbol

Festemidler

Art. Nr.

Antall



-

-

-

-

-

-

-

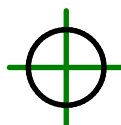
Festemidler i
sekundærbjelke

Symbol

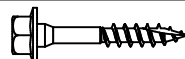
Festemidler

Art. Nr.

Antall

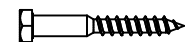


SSH



SSH10

LAG



LAG10

4