

**SIMPSON****Strong-Tie**

# Spikermønster



REV

0

REV DATE

24/10/25

DWG NAME

C\_BTC400\_2D0\_NP\_JTB-NO

Art. Nr.

=

BTC400-B

Festemidler

=

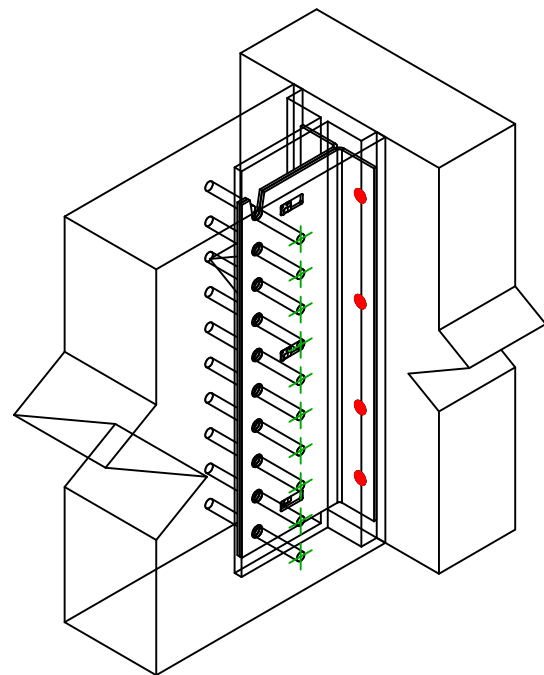
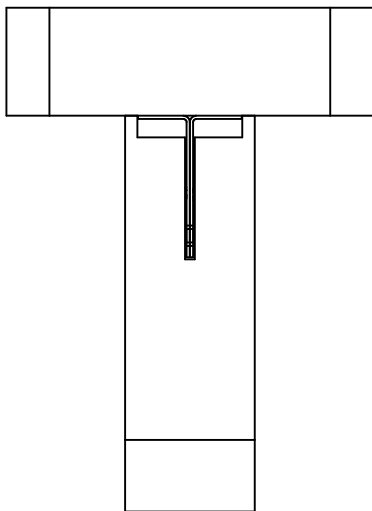
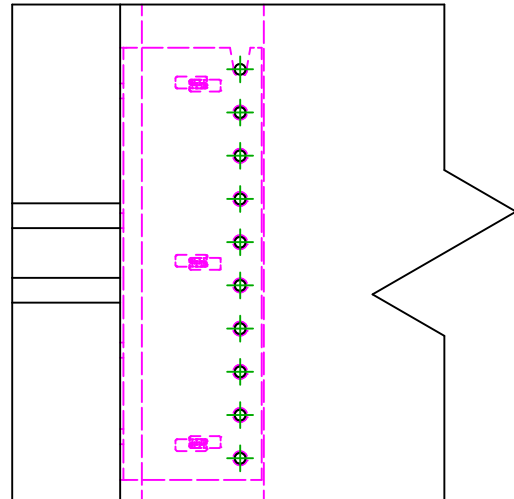
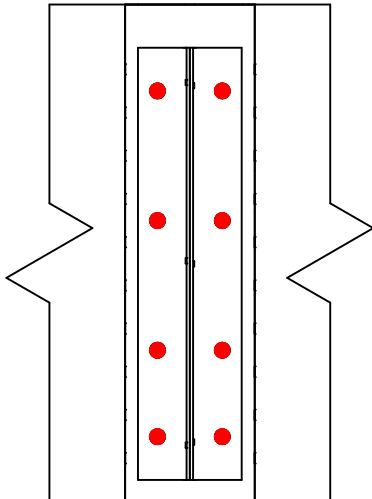
Tre til Tre

Bjelke til bjelke

Type festemiddel

=

Montering med SSH



Festemidler i hovedbjelke	Symbol	Festemidler	Art. Nr.	Antall
		SSH	SSH12.0X60	8
		-	-	
		-	-	
Festemidler i sekundærbjelke	Symbol	Festemidler	Art. Nr.	Antall
		STD	STD12	10
		-	-	