

**SIMPSON****Strong-Tie**

# Spikermønster



REV

0

REV DATE

24/10/25

DWG NAME

C\_BTC360\_2D0\_NP\_JTB-NO

Art. Nr.

=

BTC360-B

Festemidler

=

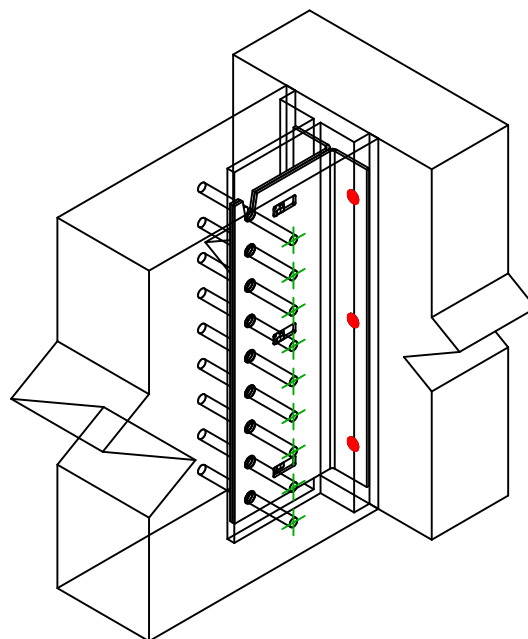
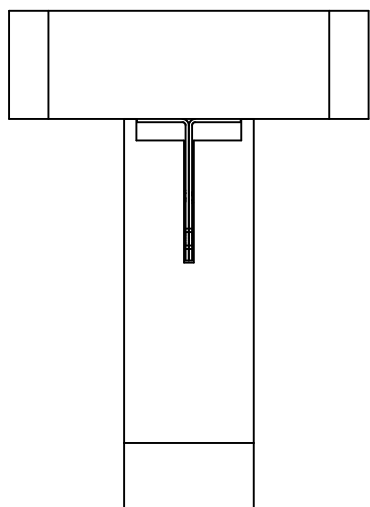
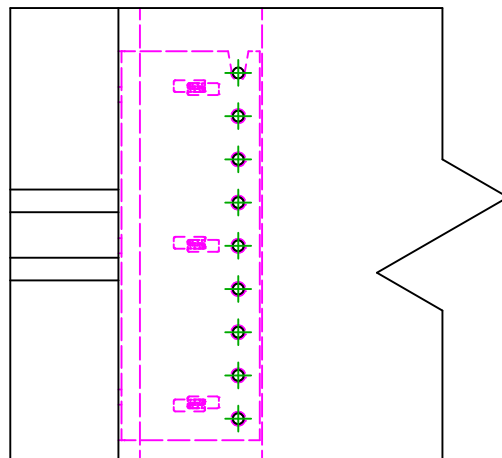
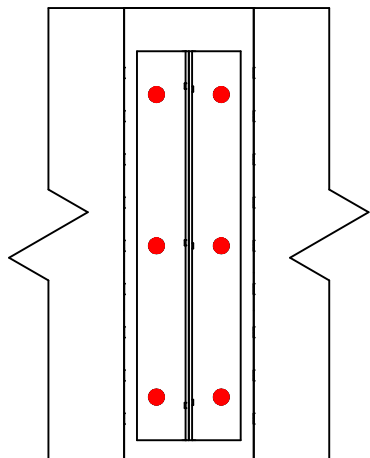
Tre til Tre

Bjelke til bjelke

Type festemiddel

=

Montering med SSH

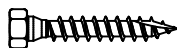
Festemidler i  
hovedbjelke

Symbol



Festemidler

SSH



Art. Nr.

SSH12.0X60

Antall

6

-

-

-

-

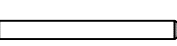
Festemidler i  
sekundærbjelke

Symbol



Festemidler

STD



Art. Nr.

STD12

Antall

9

-

-