

SIMPSON**Strong-Tie**

Spikermønster



REV

0

REV DATE

24/10/25

DWG NAME

C_BTC120_2D0_NP_JTRS-NO

Art. Nr.

=

BTC120-B

Festemidler

=

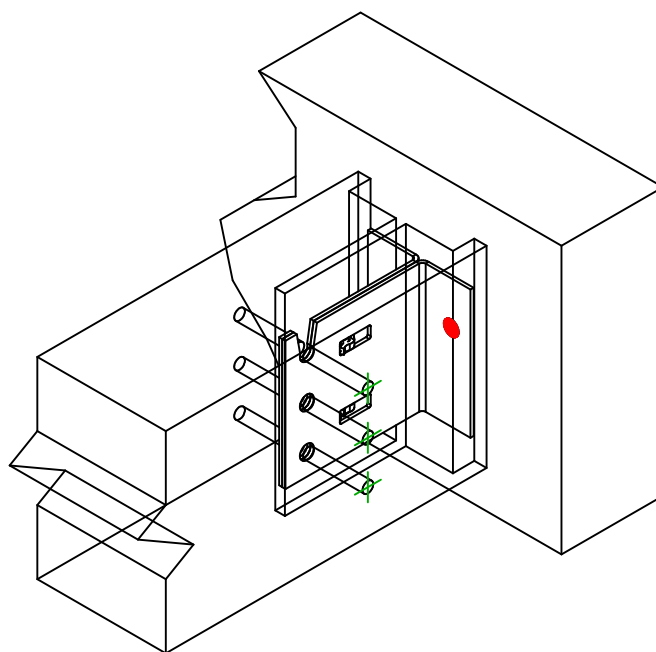
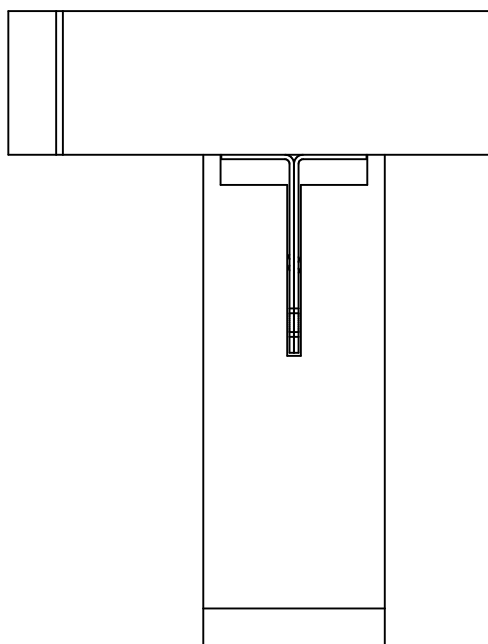
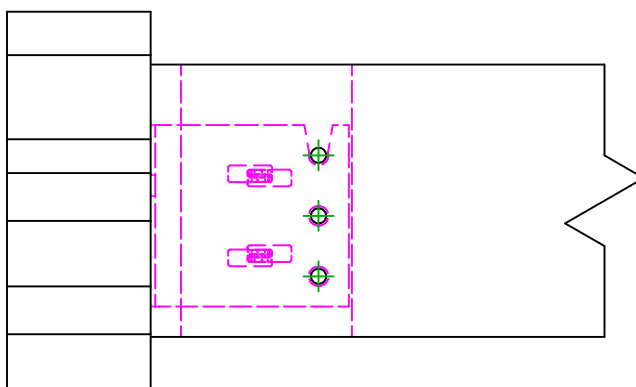
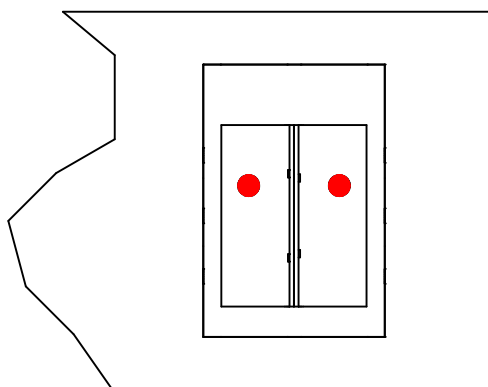
Tre på betong/stål

Tre på betong/stål

Type festemiddel

=

Innfesting til fast underlag

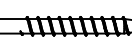
Festemidler i
hovedbjelke

Symbol



Festemidler

THD



Art. Nr.

THD10-80/5

Antall

-

-

2

-

-

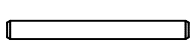
Festemidler i
sekundærbjelke

Symbol



Festemidler

STD



Art. Nr.

STD12

Antall

-

-

3