

**SIMPSON****Strong-Tie**

# Spikermønster



REV

0

REV DATE

24/10/25

DWG NAME

C\_BTC560\_2D0\_NP\_JTRS-NO

Art. Nr.

=

BTC560-B

Festemidler

=

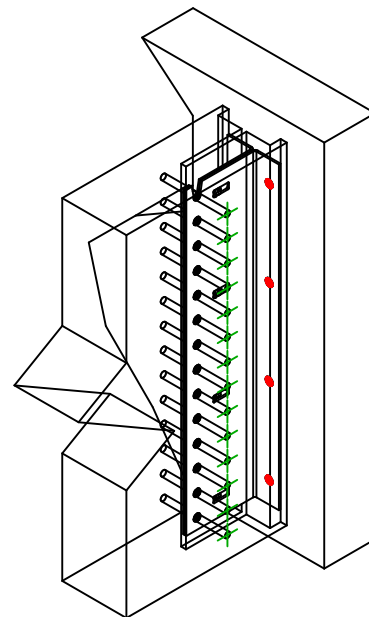
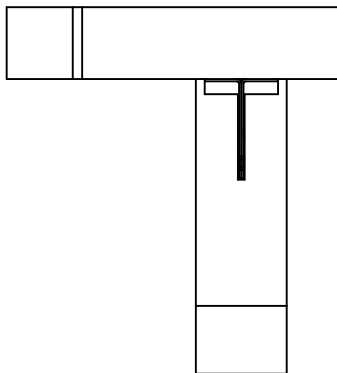
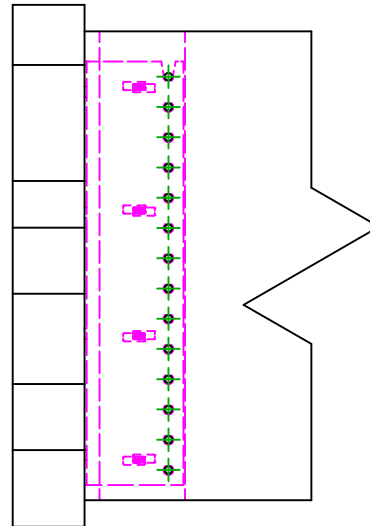
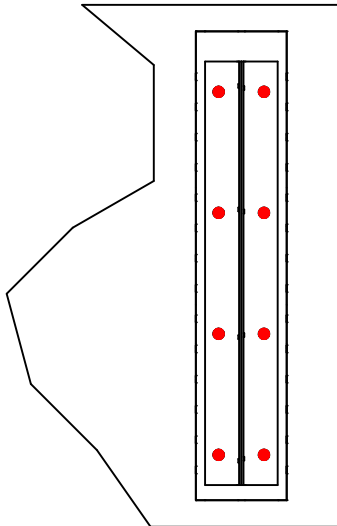
Tre på betong/stål

Tre på betong/stål

Type festemiddel

=

Innfesting til fast underlag



Festemidler i hovedbjelke	Symbol	Festemidler	Art. Nr.	Antall
		THD	THD10-80/5	8
		-	-	
		-	-	
Festemidler i sekundærbjelke	Symbol	Festemidler	Art. Nr.	Antall
		STD	STD12	14
		-	-	