

SIMPSON**Strong-Tie**

Schema chiodatura



REV

0

REV DATE

24/10/25

DWG NAME

C_BTALU1200-400_2D0_NP_JTP-IT

Codici

=

BTALU1200/400

Mezzo di giunzione

=

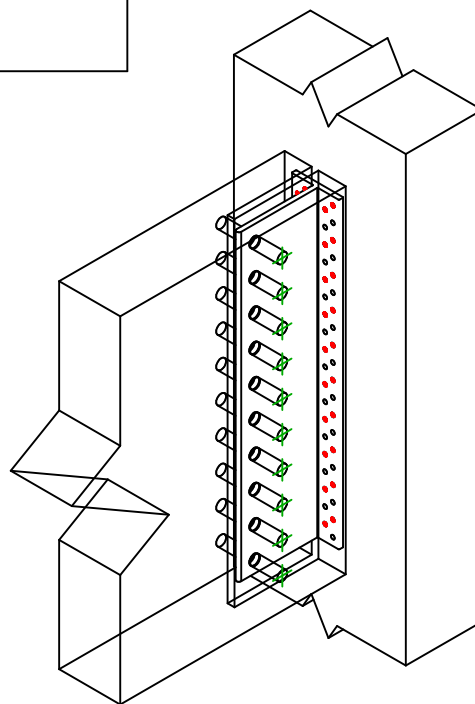
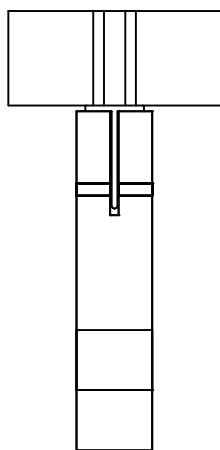
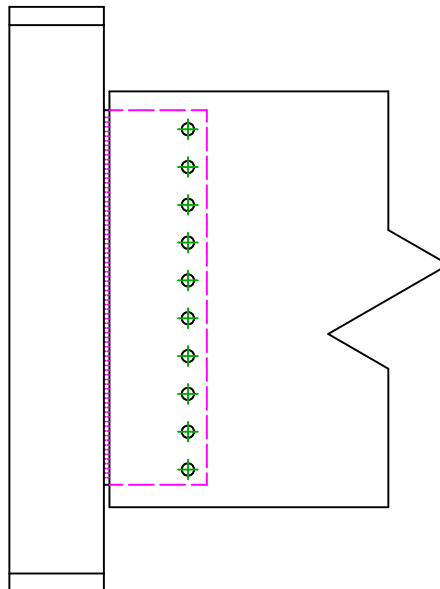
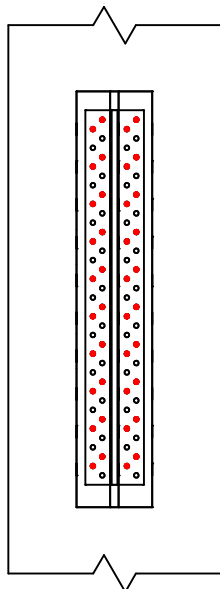
Legno a legno

Trave a pilastro

Tipo di fissaggio

=

Chiodatura parziale



Fissaggio supporto	Simbolo	Mezzo di giunzione	Codici	Q.tà
		CNA	CNA4.0X50	40
		CSA	CSA5.0X35/40	
		-	-	
Fissaggio travetto	Simbolo	Mezzo di giunzione	Codici	Q.tà
		SDD	SDD7.5	10
		STD	STD12	