

**SIMPSON****Strong-Tie**

# Schemat montażu



REV

0

REV DATE

24/10/25

DWG NAME

C\_BTALU1200-200\_2D0\_NP\_JTP-PL

Produkt

=

BTALU1200/200

Łączniki

=

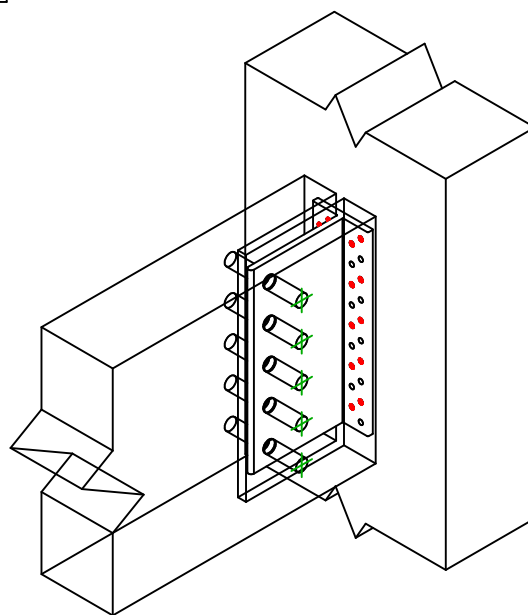
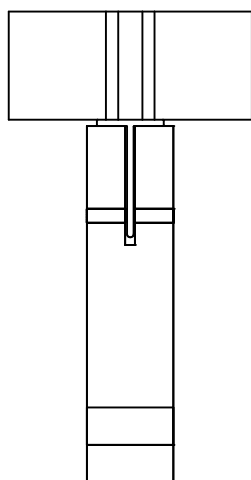
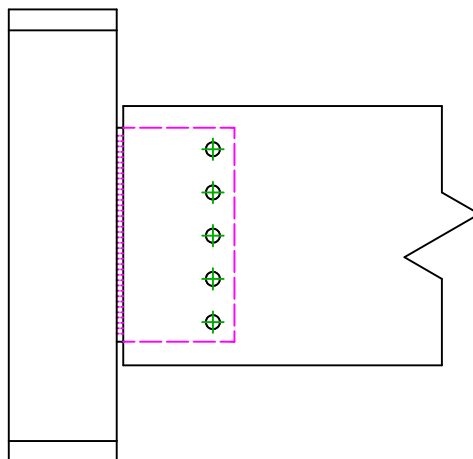
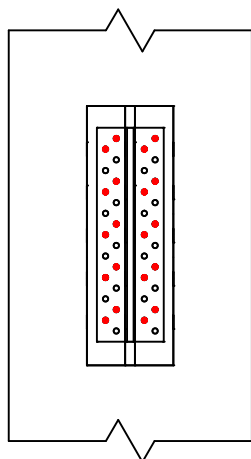
Drewno - drewno

Belka do słupa

Typ montażu

=

Częściowe gwoździowanie

Łączniki  
belka główna

Symbol


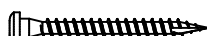
Łączniki

Produkt

Szt.

CNA  

CNA4.0X50

CSA  

CSA5.0X35/40

-

-

20

Łączniki  
belka  
drugorzędna

Symbol


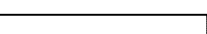
Łączniki

Produkt

Szt.

SDD  

SDD7.5

STD  

STD12

5