

SIMPSON

Strong-Tie

Utspikning



REV

0

REV DATE

20/08/24

DWG NAME

C_AKR95X3L_2D0_NP_BTR-1-SE

Art. Nr.

=

AKR95X3L

Fästelement

=

Balk till betong/stål

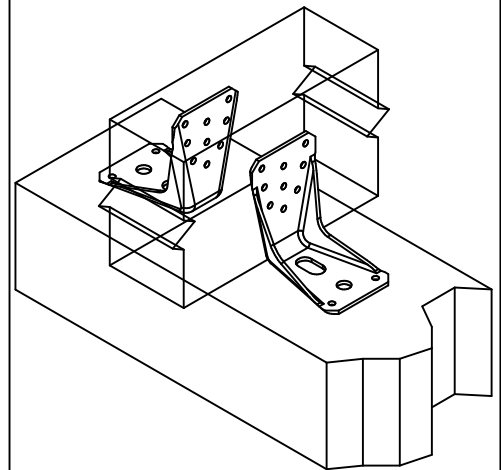
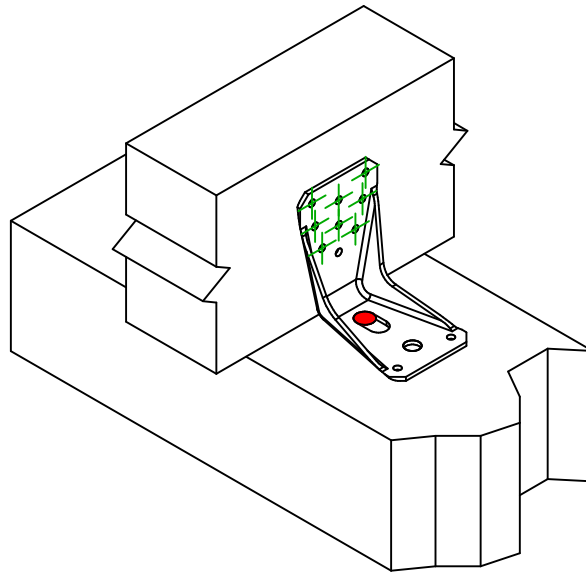
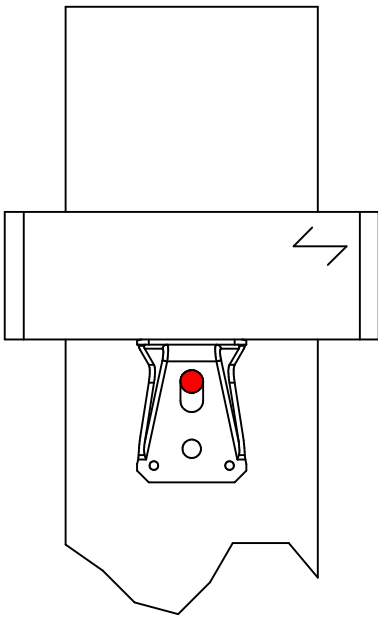
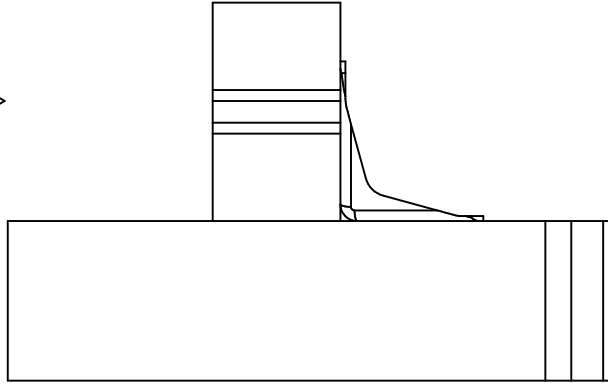
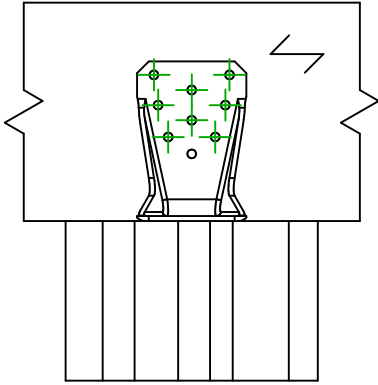
Balk till betong/stål

Typ av infästning

=

Fullständig utspikning

Spikmönster nr 1



Montering med 2 beslag

Montering med 1 beslag

Infästning i
huvudbalk

Symbol

Fästelement

Art. Nr.

Antal



FM753

FM 753 EVO M12X104/5

LMAS

LMASM12-150/35

THD

THD10X80/5

1

Fästelement i
sekundärbalk

Symbol

Fästelement

Art. Nr.

Antal



CNA

CNA4.0X35/40/50/60

CSA

CSA5.0X35/40/50

8