

**SIMPSON****Strong-Tie**

# Utspikning



REV

0

REV DATE

24/10/25

DWG NAME

C\_PBWS70Z\_2D0\_NP\_PTRS-SE

Art. Nr.

=

PBWS70Z

Fästelement

=

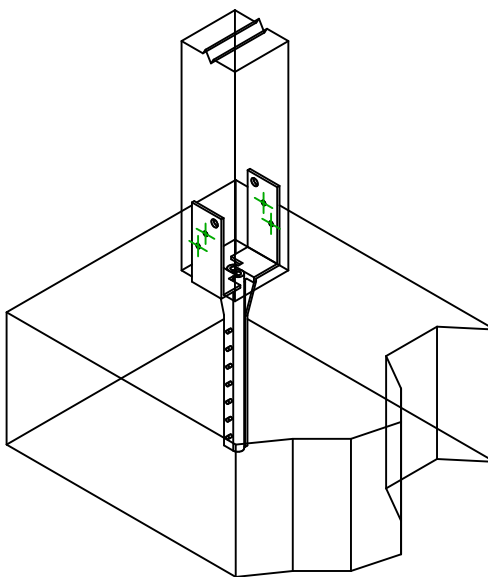
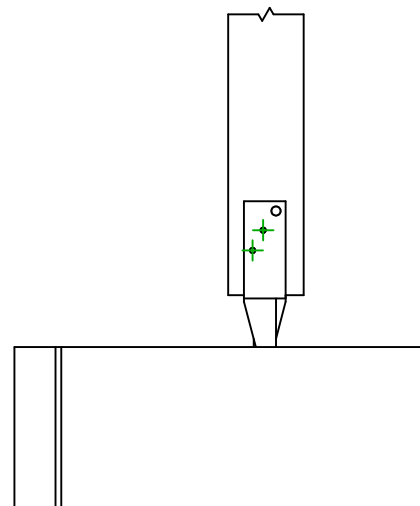
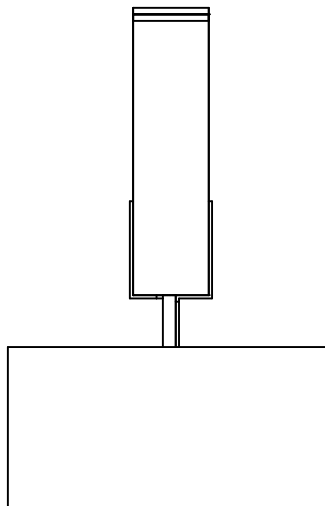
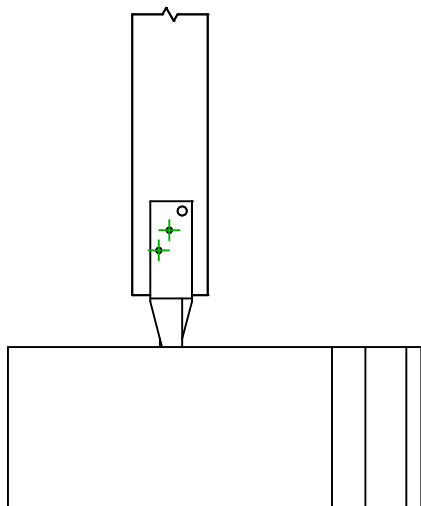
Balk till betong/stål

Stolpe till betong eller stål

Typ av infästning

=

-

Infästning i  
huvudbalk

Symbol



Fästelement

-

-

-

Art. Nr.

AT-HP

-

-

Antal



-

Fästelement i  
sekundärbalk

Symbol



Fästelement

CSA  

-

Art. Nr.

CSA5.0X40Z

-

Antal

4