

SIMPSON**Strong-Tie**

Schema chiodatura



REV

0

REV DATE

24/10/25

DWG NAME

C_PBWS70Z_2D0_NP_PTRS-IT

Codici

=

PBWS70Z

Mezzo di giunzione

=

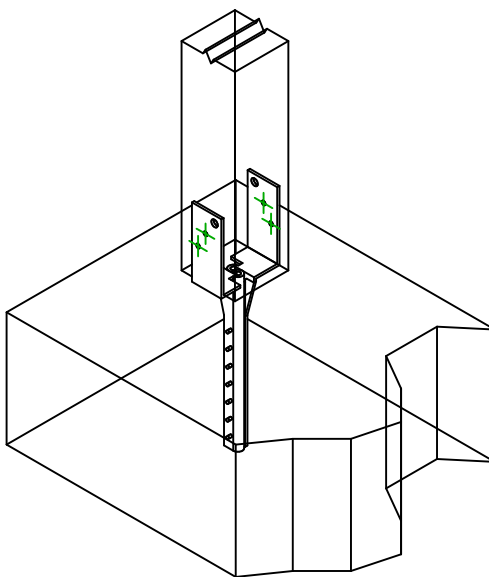
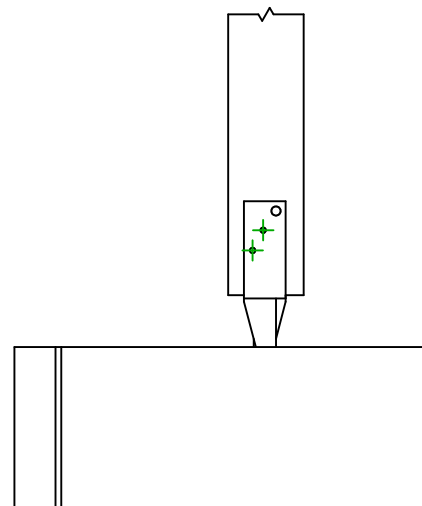
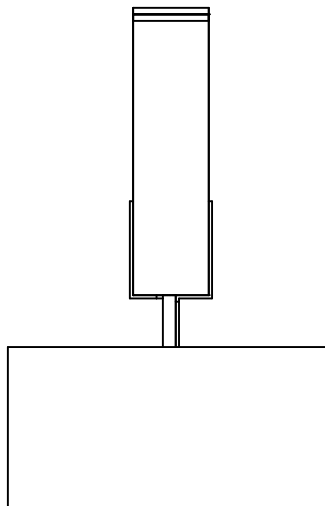
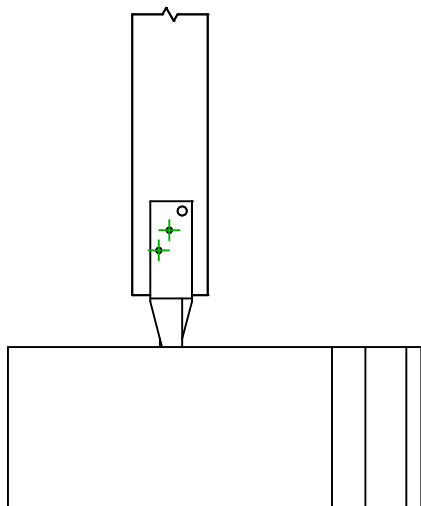
Legnoa calcestruzzo

Pilastro a calcestruzzo

Tipo di fissaggio

=

-

Fissaggio
supporto

Simbolo



Mezzo di giunzione

-

-

-

Codici

AT-HP

-

-

Q.tà

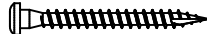
-

Fissaggio
travetto

Simbolo



Mezzo di giunzione

CSA  

-

Codici

CSA5.0X40Z

-

Q.tà

4