

SIMPSON**Strong-Tie**

Utspikning



REV

0

REV DATE

24/10/25

DWG NAME

C_PBWS100Z_2D0_NP_PTRS-SE

Art. Nr.

=

PBWS100Z

Fästelement

=

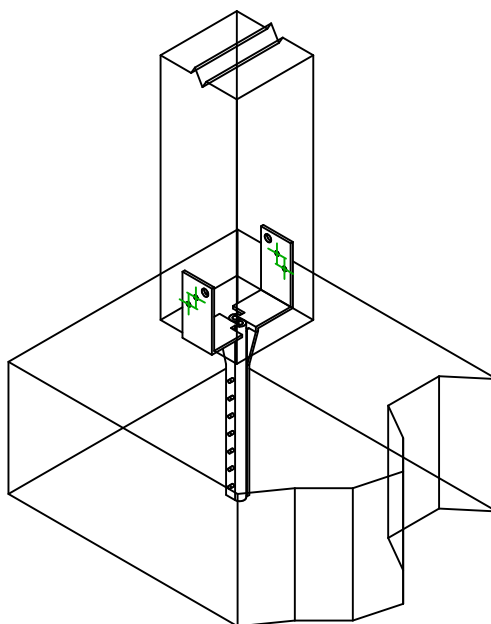
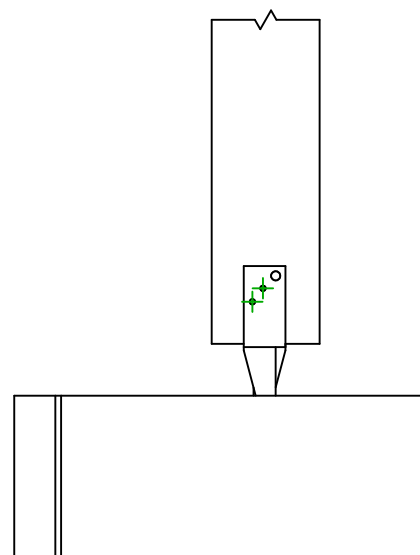
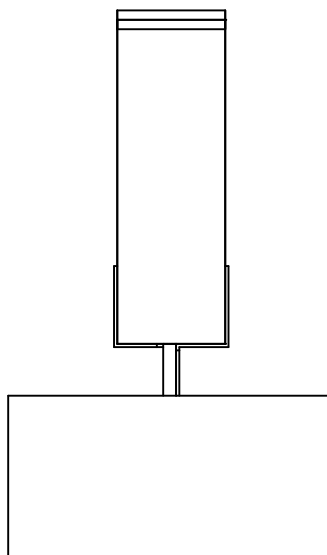
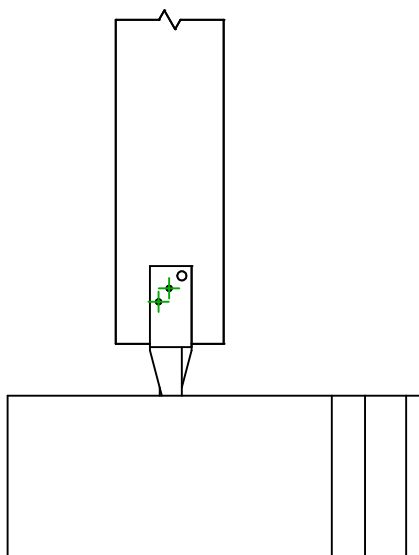
Balk till betong/stål

Stolpe till betong eller stål

Typ av infästning

=

-

Infästning i
huvudbalk

Symbol

Fästelement

Art. Nr.

Antal



-

AT-HP

-

-

-

-

-


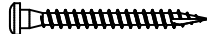
Fästelement i
sekundärbalk

Symbol

Fästelement

Art. Nr.

Antal

CSA  

CSA5.0X40Z

-

-

4