

**SIMPSON****Strong-Tie**

# Utspikning



REV

0

REV DATE

24/10/25

DWG NAME

C\_PU90\_2D0\_NP\_B-PTRS-SE

Art. Nr.

=

PU90-B

Fästelement

=

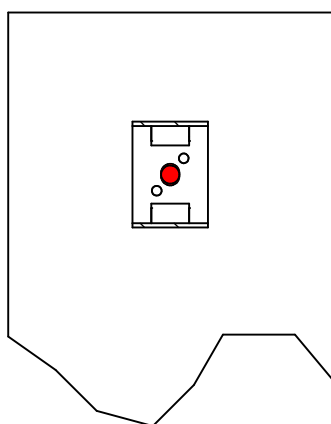
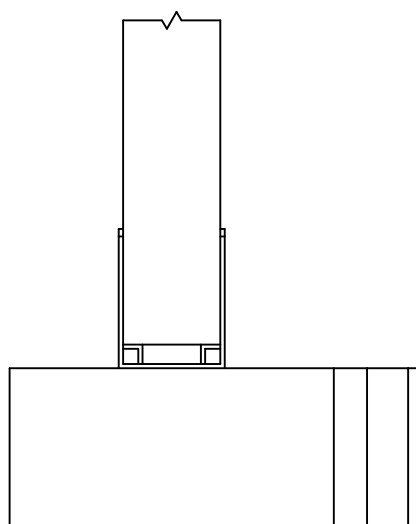
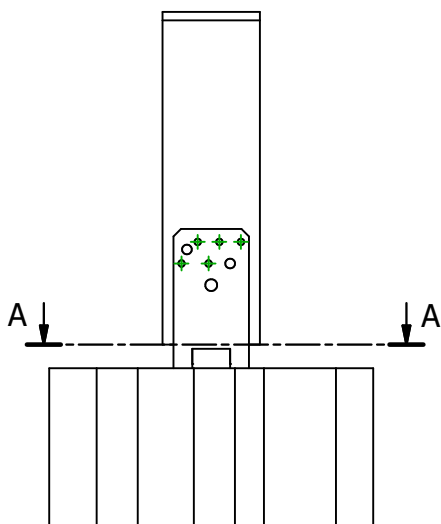
Balk till betong/stål

Stolpe till betong eller stål

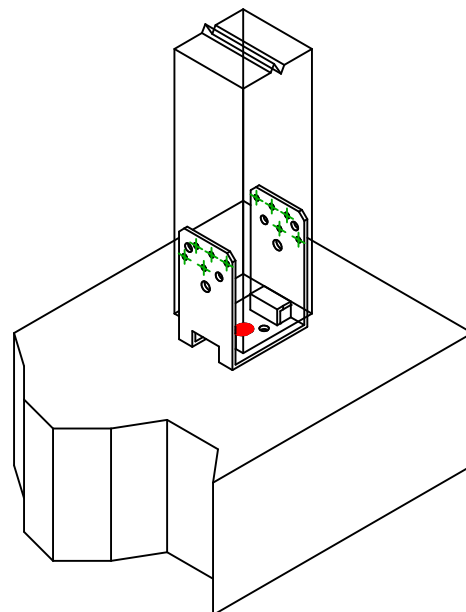
Typ av infästning

=

-



A-A ( 1:7 )

Infästning i  
huvudbalk

Symbol



Fästelement

FM-753

-

-

Art. Nr.

FM-753 CRACK 3DG M16X150/30

-

-

Antal

1

Fästelement i  
sekundärbalk

Symbol



Fästelement

CNA

-

Art. Nr.

CNA4.0X50

-

Antal

10