

SIMPSON**Strong-Tie**

Spikermønster



REV

0

REV DATE

24/10/25

DWG NAME

C_PPD140_90_2D0_NP_PTRS-NO

Art. Nr.

=

PPD140/90G-R

Festemidler

=

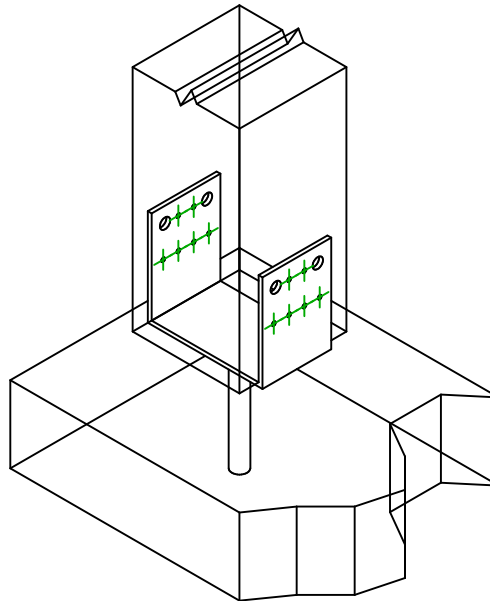
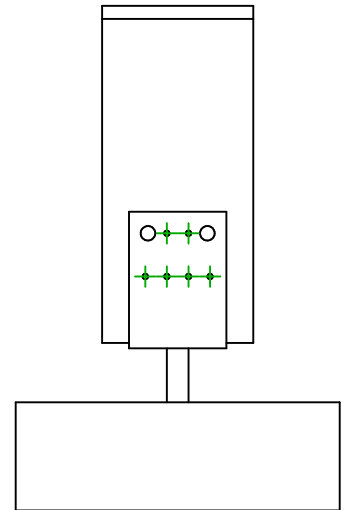
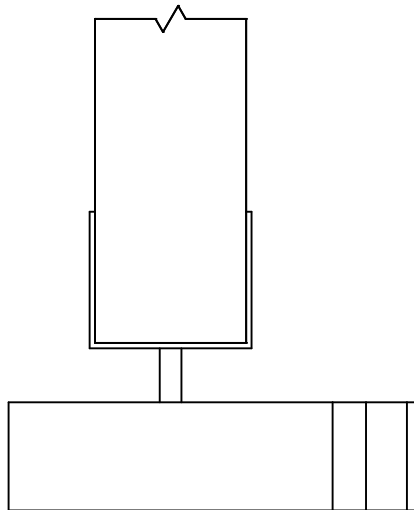
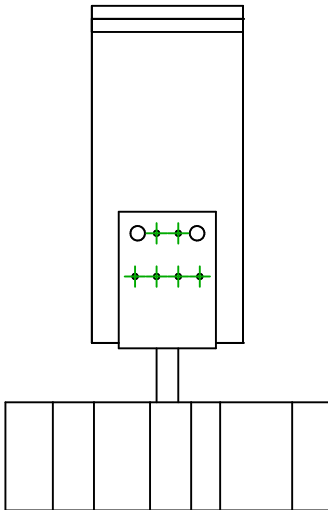
Tre på betong/stål

Søyle til betong eller stål

Type festemiddel

=

-

Festemidler i
hovedbjelke

Symbol

Festemidler

Art. Nr.

Antall



-

AT-HP

-

-

-

-

-

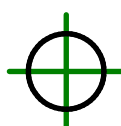
Festemidler i
sekundærbjelke

Symbol

Festemidler

Art. Nr.

Antall



CNA

CNA4.0X40

12

-

-