

SIMPSON**Strong-Tie**

Utspikning



REV

0

REV DATE

24/10/25

DWG NAME

C_PPD120_90_2D0_NP_PTRS-SE

Art. Nr.

=

PPD120/90G-FR

Fästelement

=

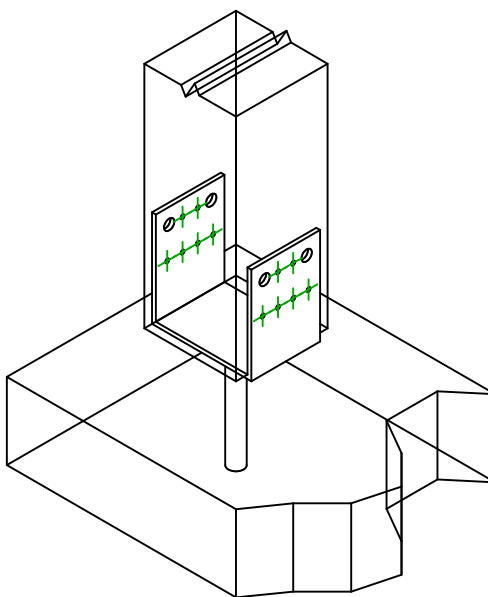
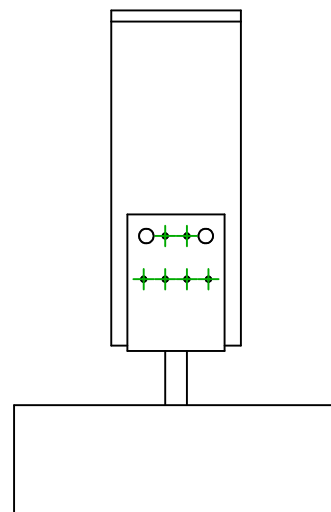
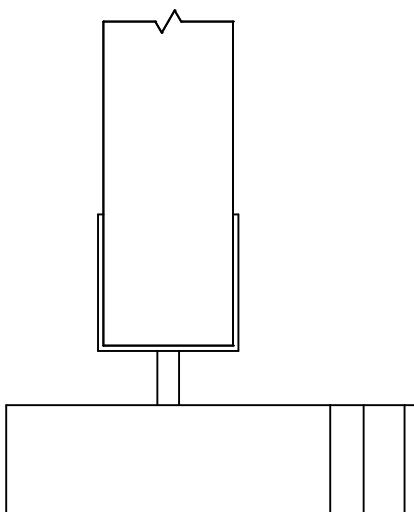
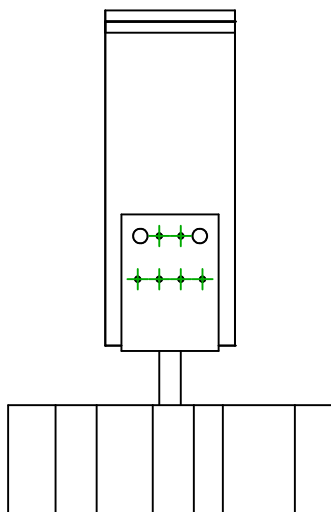
Balk till betong/stål

Stolpe till betong eller stål

Typ av infästning

=

-

Infästning i
huvudbalk

Symbol



Fästelement

-

-

-

Art. Nr.

AT-HP

-

-

Antal

-

Fästelement i
sekundärbalk

Symbol



Fästelement

CNA  

Art. Nr.

CNA4.0X40

-

-

Antal

12