

SIMPSON**Strong-Tie**

Spikermønster



REV

0

REV DATE

24/10/25

DWG NAME

C_BTC320_2D0_NP_JTRS-NO

Art. Nr.

=

BTC320-B

Festemidler

=

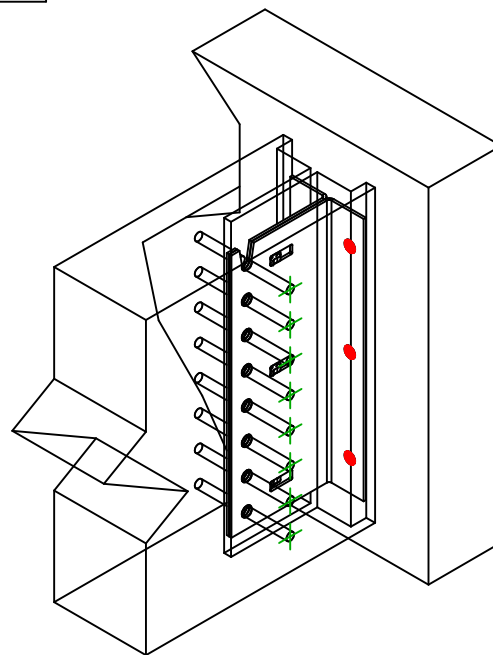
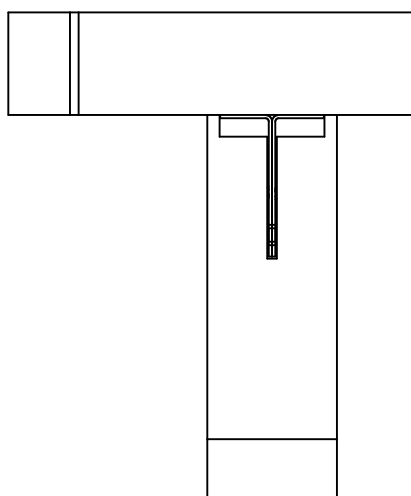
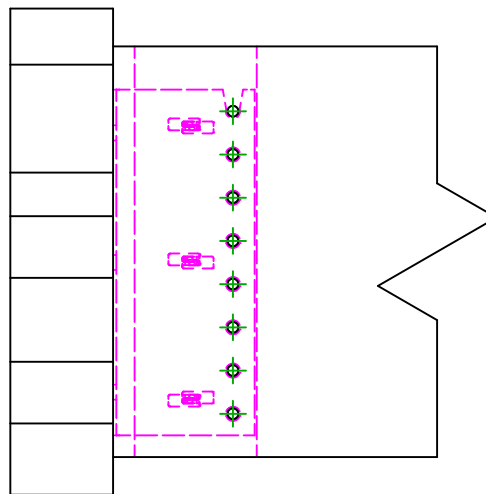
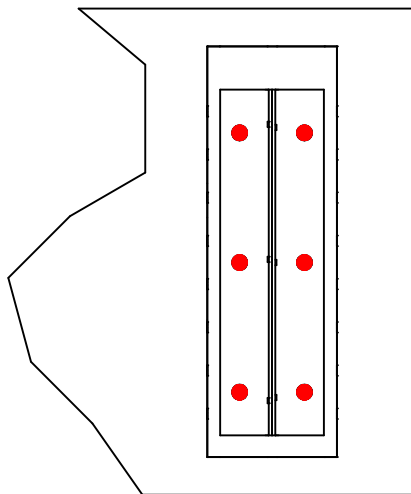
Tre på betong/stål

Tre på betong/stål

Type festemiddel

=

Innfesting til fast underlag

Festemidler i
hovedbjelke

Symbol



Festemidler

THD

-

-

Art. Nr.

THD10-80/5

-

-

Antall

6

Festemidler i
sekundærbjelke

Symbol



Festemidler

STD

-

Art. Nr.

STD12

-

Antall

8